

Celebrating
148 Years
of a

CROW WING COUNTY

2021

FAIR

EXHIBITORS HANDBOOK

AUGUST 3- AUGUST 7, 2021



FAIR REGISTRATION-SCHEDULE OF EVENTS-ENTERTAINMENT GUIDE
WWW.CROWWINGCOUNTYFAIR.COM 218-829-6680
EMAIL: MANAGER@CROWWINGCOUNTYFAIR.COM



Find us on:
facebook®



Greetings from the Crow Wing County Fairgrounds!

The closure of the 2020 CWCF due to Covid 19 was a tremendous loss to Crow Wing County along with the families of the 4H and FFA. As of April 30, 2021 Governor Walz said the state fair will open and it will be "business as usual" – almost! What that means is we are planning to open the county fair as usual within the guidelines set by the state and, expect a different look at our fair.

During the past year, we have made improvements to the fairgrounds. Concrete has been laid in the animal barn. Permanent stalls have been changed to foldaway stalls to make the barn more modern and to make more room for seasonal storage. A 4 inch well has been drilled for all the livestock area and the east side of the fair grounds. LED lights were added to the agricultural buildings. Trees were planted for more shade in the future. Electrical updates to the food buildings were made as per code. Fans to circulate air throughout the industrial buildings were added. Future plans include a horse arena and updates to the existing buildings. We are working to eliminate standing rainwater when it rains, especially the Kids Kountry Agriculture Learning Center, where we plan on raising the buildings and putting drains and tile to remove water from the area. The board is working with Minnesota Agriculture Department for a future bee pollinator garden between the south pedestrian gate and the curling center for 2021 and 2022.

The Board of Directors would like to thank you for planning to attend the 2021 Crow Wing County Fair!

Crow Wing County Fair Office:

PO Box 169
Brainerd, MN 56401
Office Phone: 218-829-6680
manager@crowwingcountyfair.com
www.crowwingcountyfair.com

Fair Hours:

Gates Open: 10:00 AM
Animal Barns Open: 10:00 AM/Close: 10:00 PM
Exhibit Buildings Open: 10:00 AM/Close: 10:00PM

Gate Pricing:

Admittance is free. Inside parking is \$5.00;
parking in south lot is \$3.00.

Emergency Services:

Accident and injury reporting is required if you are injured at the fair. Please report to the Public Safety Building to be treated and report your injury. First aid is located in the Public Safety Building.

Fair Policies:

The Crow Wing County Fair takes the greatest precautions for your safety to our fairgrounds. Each person will be personally responsible for their actions and the Crow Wing County Fair will assume no liability or be responsible for any personal injury.

The Crow Wing County Fair Board will assume no liability for loss or damage to any property to concessionaires, exhibitors, or visitors due to theft, fire, tornado, floods, weather conditions or other causes.

Notice

No golf carts, ATV's, UTV's, mopeds, roller skates, in-line skates, skate boards, bicycles, or other non-automotive wheeled vehicles are allowed on the Crow Wing County Fairgrounds other than those operated by Fair Personnel or those authorized and permitted by the Crow Wing County Fair Board **Pet Exceptions: ONLY service animals for individuals with disabilities will be allowed. See Page 15 of the Exhibitor's Handbook for details. Dogs or other pets will only be allowed when part of an exhibition, demonstration, or show.**



INDEX

Welcome	IFC
2021 Grandstand Events	2
Fair Officials	3
Horse Arena Schedule	4
Entries	6
About the Crow Wing County Fair	7
Crow Wing County Fair Map	8-9

FAIR ACTIVITY SCHEDULE | TUE., AUGUST 3

Military Day	11
Mills Free Stage Entertainment	
Oak Street Chapel Band	13
Darlene and the Boys	13
Grandstand Entertainment	
"Dirt Kickin' Wicked Good' Bull Riding	14

FAIR ACTIVITY SCHEDULE | WED., AUGUST 4

Senior Citizens Day	17
Day Care Day	
Mills Free Stage Entertainment	
Vern Bishop Moose River Band	19
Alan Godage & Sundown	19

FAIR ACTIVITY SCHEDULE | THUR., AUGUST 5

AG Day	21
Mills Free Stage Entertainment	
Doug Allen Nash	23
Wyld Ryce	23
Grandstand Entertainment	
Moto X	24
Come get Agri-cated	25
Crow Wing County Farm Families of the Year	25
Crow Wing County Century Farms	27

FAIR ACTIVITY SCHEDULE | FRI., AUGUST 6

Talent Shows - Teen Day	29
Mills Free Stage Entertainment	
Arena	29
Talent Contest Entry Form/Rules	30-31
Grandstand Entertainment	
Brainerd Baja Rally Races / Rules	32-33

FAIR ACTIVITY SCHEDULE | SAT., AUGUST 7

Kid's Day	35
Mills Free Stage Entertainment	
Ray's Promenaders	37
Wayne Renn Band	37

Kid's Day	39
CWC Fair Coloring Contest	41
Gift Card Drawing / Rules	42
General Rules	47
Procedure for Claiming Premium Checks	49
Entry Form	51
Judging Schedule	55
Horse Show Entry Form	58
Livestock Entry Form	60

PREMIUM LIST

Department 40 - Baking	61
Department 41 - Canning	63
Department 42 - Senior Citizens Canning	64
Department 43 - Home Brew	64
Department 50 - Homemaking Crafts	64
Department 51 - Senior Citizens Homemaking Crafts	65
Department 52 - Nursing Home and Handicapped	65
Department 60 - Garment Making	65
Department 61 - Senior Citizens Garment Making	67
Department 62 - Nursing Home and Handicapped	67
Department 70 - Quilts	68
Department 80 - Hobbies, Crafts and Art	68
Department 80(A) - Youth Hobbies, Crafts and Art	70
Department 81 - Senior Citizens Hobbies, Crafts & Art	70
Department 82 - Nursing Home and Handicapped	70
Department 83 - Photography	70
Department 90 - Flowers	70
Department 100 - Fruits and Vegetables	73
Department 110 - Field Crops	74
Department 120 - Youth Art	75
Department 200-260 - Exhibition of Livestock	
MN Requirements	77
Department 200 - Open Class Horses	78
Department 210 - Open Class Dairy Cattle	79
Department 215 - Open Class Beef Cattle	80
Department 220 - Open Class Sheep	81
Department 230 - Open Class Rabbits	81
Department 240 - Open Class Poultry	82
Department 250 - Open Class Goats	83
Department 260 - Open Class Swine	84
Department 300/FFA	84



2021 Grandstand Events



Tuesday Aug. 3 **“Dirt Kickin’ Wicked Good” Bull Riding** **with Barrel Racing**

Show Time.....7:00 PM



Wednesday Aug. 4 **Demo Derby**

Show Time.....7:00 PM



Thursday Aug. 5 **Motocross**

Show Time.....7:00 PM



Friday Aug. 6 **Baja Rally Races**

Show Time.....7:00 PM

Pit Gates Open.....4:00 PM



Saturday Aug. 7 **Baja Rally Races**

Show Time7:00 PM

Pit Gates Open4:00 PM

****Any contestant found to be committing rule infractions will be disqualified and may forfeit being a contestant at any Crow Wing County Fair event.**



OFFICERS

Sharron Ryappy, President	218-839-0270
Dewayne Collins, Vice President	218-821-7314
Sheri Doucimo, Secretary	770-990-8211
Kris Doucimo, Treasurer	218-203-7576

BOARD OF DIRECTORS

Tammy Blazek 218-820-8763	Gary Doucette 218-838-9671	Rob Fitzsimmons 218-821-6965
Barb Burgwald 218-828-1507	Sheri Doucimo 770-990-8211	Tom Malloy 218-829-2238
Bob Dambowy 218-829-8190	Bill Brekken (County Liasion) 218-232-0257	Lee Hauble 612-308-0895

General Manager	Gary Doucette - 218-838-9671
Space Rental Coordinator	Marge Hillman - 218-820-5352 mhillman@brainerd.net
Superintendent of Fine Arts	Lisa Jordan - 218-833-0416
Superintendent of Photography	Rob Fitzsimmons - 218-821-6965
Superintendent of Youth Arts	Kay Johnson - 218-829-9709
Superintendent of 4-H Building	Cassie Girling - 218-838-2142
Superintendent of Horticulture	Fair Office - 218-829-6680
Superintendent of Kids Kountry	Gwen Pierzinsk - 218-829-5680
Superintendent of Cattle	Bob Dambowy - 218-829-8190
Superintendent of Horses	Tammy Blazek - 218-820-8763
Superintendent of Poultry	Michelle Bernatsky - 218-839-9804
Superintendent of Rabbits	Amanda Malloy - 218-838-8536
Superintendent of Sheep, Swine & Goats	Andy Hillman - 218-232-2932
FFA Advisor	Magnus Nelson - 218-232-3753
Superintendent of Mills Free Stage	Barb Burgwald - 218-828-1507
Livestock Show Coordinator	Melissa Rahto - 218-820-4783
Horse Show Coordinator	Jenny Peterson - 218-820-7655
Ag Day Coordinator	Gary Doucette/Reilly Hettver - 218-821-6954
Day Care Day Coordinator	Fair Board
Kids Day Coordinators	Kris Doucimo / George Burton - 218-203-7576
Talent/Teen Day Coordinators	Sharron Ryappy/Gary Doucette - 218-855-0654
Grandstand Coordinator	Tom Malloy - 218-829-2238
Senior Day Coordinator	Rosanne Caughey - 218-828-1998
Bookkeeper	JoAnn Tuil - 218-851-6350
Winter Storage	218-829-6680
Official Veterinarian	Ann Domagala - 218-825-4963

Fairgrounds Office 218-829-6680

website: www.crowwingcountyfair.com | e-mail: manager@crowwingcountyfair.com

Find us on Facebook



HORSE ARENA SCHEDULE

TUESDAY, AUGUST 3

10:00 A.M.....4-H Achievement Judging, Performance & Halter Show
 7:00 P.M.....Crow Wing 4-H Drill Team

WEDNESDAY, AUGUST 4

10:00 A.M.....4-H Horse Training Evaluation, Horse Show Games
 7:00 P.M.....Crow Wing 4-H Drill Team

THURSDAY, AUGUST 5

4:00 P.M.....Obstacle Show
 6:00 P.M.....Tiny Tots Hors Show (Entries Noon - 3:00 P.M.)
 7:30 P.M.....Open Barrel Run (Entries 5:00 - 7:00 P.M.)

FRIDAY, AUGUST 6

8:00 A.M.....Open Class Horses Judged
 9:00 A.M.....WSCA Open Pleasure Show
 5:00 P.M.....NSCA O-Mok-See Show (Entries 4:00-5:00 P.M.)

SATURDAY, AUGUST 7

8:00 A.M.....WSCA Open Game Show



CROW WING COUNTY FAIR RODEO BARREL RUN

Tuesday 3rd 2021

Crow Wing County Fairgrounds- 2000 SE St, Brainerd, MN 56401

MAKE CHECKS PAYABLE TO: BOOTS'N BUCKLES SADDLE CLUB

MAIL ENTRY AND MONEY 16060 County Rd 24
Brainerd, MN 56401

Name: _____ Horse: _____

Address: _____

City _____ State _____ Zip Code _____

Telephone: _____

LIMITED TO 70 RIDERS!!

Slack will run from 3-5pm in Fair Grandstand. TOP 20 FASTEST RIDERS
coming back to Bull Ride performance at 7pm in Grandstand

\$500 ADDED MONEY TO SHORT GO

\$50.00 if entered before June 15th, 2021

\$60.00 if entered before July 15th, 2021

\$70.00 up to entry close date of July 30th, 2021

****ENTRY AND MONEY MUST REACH US BY DUE DATES****

Boots'n Buckles Saddle Club AND Crow Wing County fair are not responsible for any accidents or damage that may occur to you, your horse, your tack, or your property. That includes all members, board of directors and chairpersons. By signing this, I waive and release all claims for personal injury or any claim against the events, its workers, or the clubs.

MUST SIGN TO RUN!!

SIGNATURE: _____ DATE: _____



ENTRIES

PRE-REGISTRATION (WHETHER ONLINE OR HARD COPY) IS REQUIRED FOR ALL OPEN CLASS ENTRIES

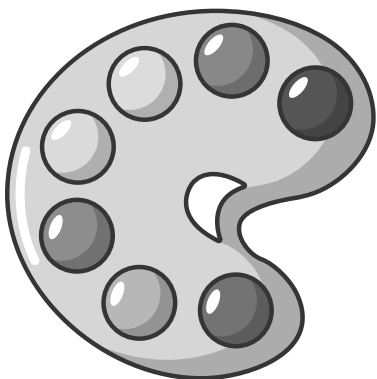
1. When the Department, Class and Lot Number of the exhibit have been determined, fill in entry form provided in this book.
2. An exhibitor may enter only one exhibit in any lot, but may enter as many lots as he/she wishes (except when stated otherwise).
3. **READ ALL RULES AND DESCRIPTIONS.**
4. **Pre-Registration (whether online or hard copy) is required on or before Fri., July 30, 2021 by 3:00 PM.**

WAYS TO ENTER:

- a. Mail your entry form to:
CROW WING COUNTY FAIR
PO Box 169
Brainerd, MN 56401
 - b. *Register ON LINE: go to website
crowwingcountyfair.com
Be sure to wait for confirmation number
6. On Entry Day take each exhibit to the building where it will be displayed.

Please call 218-829-6680 with questions about your entry.

4-H Entries: Crow Wing County 4-H members will pre-register with class project codes in the 4-H Premium Book which will be mailed and also is available online at www.etextension.unm.edu/county/crowwing or by picking up a copy at the Extension office. 4-H registration is due to the Extension office July 12 or before.

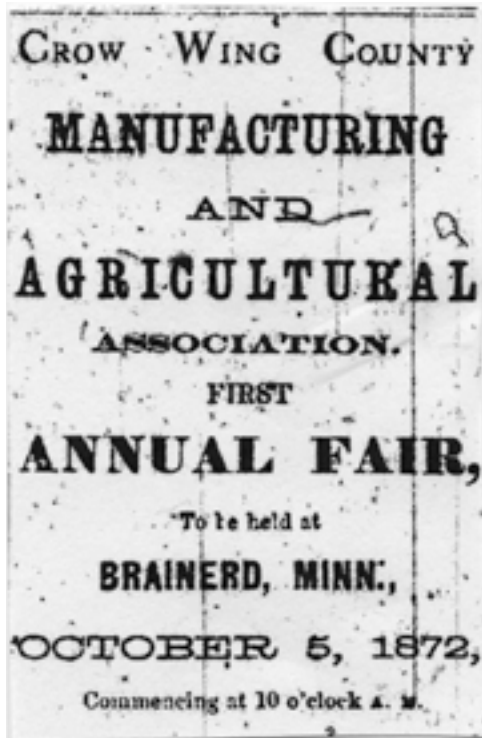


YOUTH ARTS & FINE ARTS
pre-registration is required



PHOTOGRAPHY
will be entered and on display in the former
Hardy Building
(next to the Bee Keepers building)

The Fairgrounds will officially open at 10:00 A.M. on Tuesday, August 3, 2021



The first “Annual Fair” was held in Brainerd, MN on Saturday, October 5, 1872. Fairs in Crow Wing County were then held sporadically in Brainerd, Pequot Lakes and Crosby before being organized and permanently located in Brainerd in 1937. The 1899 fair was held at grounds owned by M. K. Swartz located just east of the 1900 block on East Oak Street. In 1938 the fair was held at the Brainerd Armory and beginning in 1939 at the Mill Avenue fairgrounds where it was held each year until moving to its present location at 2000 South 13th Street in 1962. The fair began as an agricultural event for purpose of providing a place for county residents to exhibit their products. Youth projects such as 4-H and FFA were able to enter and compete for prizes. While many aspects of the fair have changed over the years, the main philosophy remains the same, to provide opportunity for our patronage to touch base with the agricultural heritage of Crow Wing County.

The Crow Wing County Fair is now among the largest fairs in Minnesota.

The fair is an educational non-profit organization. We would like to invite you to become member of the fair association. Please join and become an active part of the Fair.

MEMBERSHIP

A person wishing to participate in the monthly meetings of the Association must purchase a Membership, costing \$15.00 for Individual per year, which is good July 1, 2021 to June 30, 2022. Membership entitles you to free parking in the South lot during the fair, at the November Business Meeting and two newsletters per year.

Find enclosed \$_____ for which I request you send me _____ membership(s). Includes pass to south parking lot.

Mail to Crow Wing County Fair, PO Box 169, Brainerd, MN 56401

Name _____ Phone _____

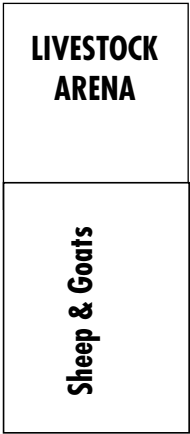
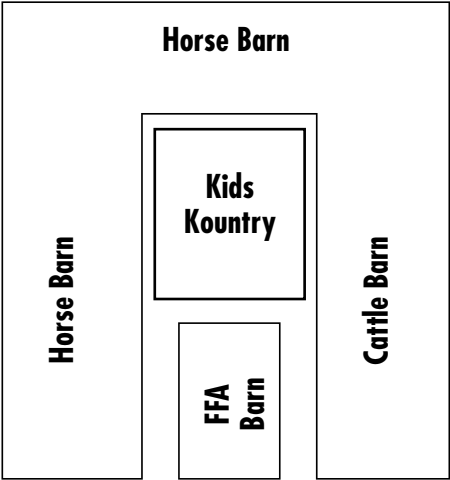
Address _____

City _____ State _____ Zip _____

Horse Arena

CARNIVAL

Public
Safety
Bldg.



Food

Food

Food

General
Store

Food

Historical
Society

Youth Art

Wohl
House

Blacksmith
Shop

Antique Tractor
Display

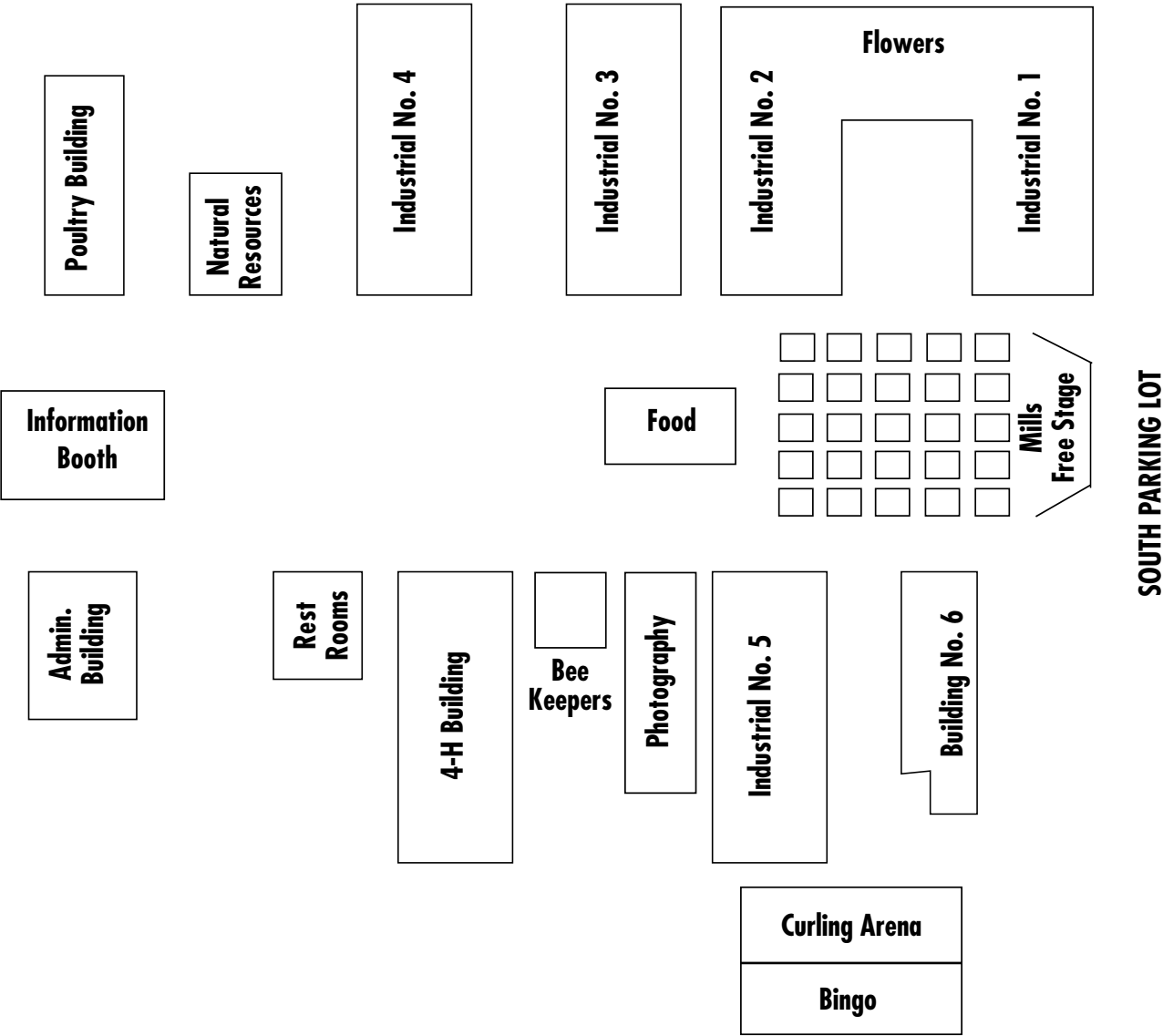
Fine Arts

Pull
Tabs



13TH STREET

GRANDSTAND



13TH STREET

Crow Wing County FAIRGROUNDS

Much, much more than a county fair!

When the lights of the midway dim, the Crow Wing County Fairgrounds shines it's brightest.

Looking for a unique venue for your wedding or family gathering? Look no further than our vast and spacious facilities that allow for the perfect setting to achieve that sought-after look. In addition to approximately 70 on-site camping sites, your guests are within mere miles of several lodging options making this an ideal location for any style of wedding or family gathering.

Our bandstand is a fantastic place for concerts and performances. Already, churches and other organizations have taken advantage of this space for fundraisers and other activities benefitting the prime acoustical setting.

For roughly 50 weeks out of the year, the buildings and grounds of the Crow Wing County Fairgrounds are available, affordable and flexible in nature to meet the needs of most any event or activity. In every season, the Fairgrounds has what you're looking for to ensure a successful affair.

Craft shows, farmer's markets, flea markets, car shows, corporate events, camping clubs, art shows, church concerts and gatherings, auctions, weddings, family gatherings, graduation parties, seasonal storage and much more. The sky is the limit for hosting any occasion at the Crow Wing County Fairgrounds.

We're much more than just a Fair!

For Rates & More Information:

218-829-6680

manager@crowwingcountyfair.com

www.crowwingcountyfair.com



FRIDAY, JULY 30

Youth Arts and Fine Arts & Photography - Pre-Registration Due **(Required)**

SUNDAY, AUG. 1

11:00 A.M. to 5:00 P.M. Fine Arts, Youth Arts & Photography Entered

MONDAY, AUG. 2

9:00 A.M. Fine Arts, Youth Arts & Photography Judged

10:00 A.M. to 6:00 P.M. Open Class Flowers, Vegetables and Grains Entered

1:00 P.M. to 6:00 P. M. 4-H Non-Livestock Entry and Exhibit Judging - 4-H Building

5:00 P.M. All 4-H Booths and Banners Completed - 4-H Building

6:30 P.M. Flowers/Vegetables/Grains Judged

TUESDAY, AUG. 3 - MILITARY DAY

8:00 A.M. to Noon 4-H & FFA Livestock Entered

8:00 A.M. to 9:30 A.M. 4-H Horses Entered

8:00 A.M. to 9:30 A.M. 4-H Rabbits Entered

10:00 A.M. . 4-H Horse Achievement Judging followed by 4-H Horse Show (Performance) - Horse Arena

10:00 A.M. to 8:00 P.M. Kids Kountry Open

10:00 A.M. to 10:00 P.M. Exhibit Buildings Open

10:00 A.M. 4-H & FFA Rabbit Show - Poultry/Rabbit Tent

1:00 P.M to 3:30 P.M. Oak Street Chapel Band - Mills Free Stage

3:00 P.M. to Close. Midway Opens - Midway

3:00 P.M. to 9:00 P.M. Play Bingo - Upper Level, Curling Building

4:00 P.M. 4-H Poultry Show - Poultry/Rabbit Tent

5:30 P.M. **OPENING CEREMONIES**

Parade of Colors - American Legion - VFW - Civil Air Patrol Honor Guard - Mills

6:00 P.M. to 10:00 P.M. Darlene and the Boys - Mills Free Stage

7:00 P.M. Dirt Kicking Wicked Good Bull Riding - Adults \$15.00, 12 and Under \$10.00 - Grandstand

7:00 P.M. Crow Wing 4-H Drill Team Performances - Horse Arena



★ 5:30 PM OPENING CEREMONIES ★

The Crow Wing County Fair Association will dedicate the fair's opening day, Aug 3, to recognize area military personnel and their families.

PARADE OF COLORS





“Real Vikings, No Horns”

Saturday, August 21, 2021

10:00 A.M. - 4:30 P.M.

Crow Wing County Fairgrounds

Authentic Viking Age costumes, weapons, crafts, music, and games!

An affordable family event with special activities for kids!

Onsite food!

CROWWINGVIKINGFESTIVAL.COM



"This activity is made possible by the voters of Minnesota through a grant from the Five Wings Arts Council, thanks to a legislative appropriation from the Arts and Cultural Heritage Fund."



SONS of NORWAY

Sagatun Lodge - 018

Celebrating 119 Years!

Visit us in Industrial Building #5

Scandinavian folk arts will be demonstrated each day through the fair.

See demonstrations of rosemaling, chip carving, weaving, Hardanger, bentwood box crafts, and more!

www.NATIONALGUARD.com/Minnesota

MINNESOTA

We live here | We work here | We serve here

www.youtube.com/c/MinnesotaArmyNationalGuard

education BENEFITS

Facts accurate as of 3/10/2017



25%/75%
tuition reimbursement
select schools only

50%
only funded at public schools

100%
based on the U of M - Twin Cities rate
\$3,996 yr
only at state schools

50%
must be an in-state resident

How will you pay for college?

Minnesota is the only state in our region to offer 100% tuition reimbursement.

For more information:



CALL OR TEXT
SFC Joshua Derheimer
320-760-4429

STOP BY OUR TENT TO WIN A T-SHIRT!

WE LIVE HERE ▼ WE WORK HERE ▼ WE SERVE HERE

Mills Free Stage Entertainment

★ Tuesday, Aug. 3 ★ Military Day ★

Oak Street Chapel Band

1:00 PM - 3:30 PM

The Oak Street Chapel Praise Band consists of many talented members who can be found playing throughout the community several times a week. Their gift and love of music can be heard at many places, Nursing Homes, Community Events, Mn Teen Challenge, and many other Out Reaches. The Praise Band plays a wide variety of music including Traditional, Contemporary, Waltz's, Polka's, and Country Gospel. Included in the variety are Original Songs written and composed by the band. It is



a great joy for the Oak Street Praise Band To share the Love for our Lord through Fun and Meaningful Music. We also bring Honor and Respect to our Veterans by recognizing them and thanking them for there service.

Darlene and the Boys

Time: 6 pm-10 pm

Band Biography:

Darlene And The Boys perform traditional country music by such artists as: Johnny Cash; June Carter Cash; George Strait; Patsy Cline, Loretta Lynn; Merle Haggard, Buck Owens, and George Jones, just to name a few.

They can be seen on the RFD TV Network's "Midwest Country" and their music can be heard on radio stations around Minnesota and beyond.



Band leader, Darlene Nelson has performed on numerous TV/radio and stage shows with many stars of the Grand Ole Opry. She was a multiple winner of Nashville's "BE A STAR" and has made appearances on the Ernest Tubb Record Shop Midnite Jamboree, as well as the Shotgun Red Variety Show in Nashville.

Grandstand Entertainment

"DIRT KICKIN' WICKED GOOD BULL RIDING

Brought to you by: Great Frontier Bull riding Co.

Tuesday, Aug. 3, 2021 • 7:00 P.M.



Tickets: Adult \$16.00 / 12 & Under \$10.00

Tri-County Livestock Auction Inc.

Motley, Minnesota

Ph: 218-352-6546



**Little Falls - Brainerd
Pine River - Pierz**

hannekeninsurance.com

Auto • Home • Bus • Life • Health • Farm

**SERVING FAMILIES & BUSINESSES
FOR OVER 30 YEARS**



www.AndersonBrothers.com

*Crystal
Cleaners*

*If your clothes are not
becoming to you...then YOU
should be coming to us!*

DRY CLEANING • LAUNDRY • TAILORING

RICK & SUSAN BRICKER

Owners

421 West Washington St

Brainerd, MN 56401

Phone **(218) 828-0337**

Hours: **M-F 7 am -5:30 pm**

14 West Main St

Crosby, MN 56441

Phone **(218) 546-5329**

Hours: **M-F 9 am -1 pm**



Like us on
Facebook

crystalcleanersandtailors@yahoo.com

BURT ELECTRIC, LLC.

**COMPLETE ELECTRICAL CONTRACTING
AND QUALITY SERVICES**

norpac@brainerd.net

GEORGE BURTON

701 CHARLES ST.

829-8922

BRainerd, MN 56401



**Get the PARTS YOU NEED
at a price YOU CAN AFFORD!**

**Your Late Model Auto & Truck Parts Store
Nationwide Shipping | 90 Day Warranty**

**MINNESOTA'S DEPENDABLE AUTO
SALVAGE YARD SINCE 1935**

Check us out on our web page - **www.shipmanauto.com**



**BRainerd
HARDWOODS
INCORPORATED**

Est. 1980 "Fine Architectural Millwork"

- Moldings • Radius Millwork • Custom Doors
- Stair Parts • Paneling & Flooring

Contact: Joe Paine (JP)

Phone: (218) 828-4824 • Cell: (218) 820-1222

Fax: (218) 828-0720

jpaine@brainerdhardwoods.com • www.brainerdhardwoods.com
13844 White Pine Drive, Brainerd, Minnesota 56401

Fair Activity Schedule

WEDNESDAY, AUG. 4 - SENIOR CITIZENS DAY

EMS Day at the Public Safety Building featuring Medical Services from the county

9:30 A.M. Day Care Day Events - Meet at Mills Free Stage

9:30 A.M. 4-H & FFA Beef Show - Livestock Arena

10:00 A.M..... 4-H Horse Training Evaluation followed by 4-H Horse Show (Games) - Horse Arena

10:00 A.M. to 8:00 P.M.....Kids Kountry Open

10:00 A.M. to 10:00 P.M..... Exhibit Buildings Open

10:30 A.M.....Great Northern Model T Club

& the Old Homestead Power Tractor Club Parade thru Fairgrounds

Noon to CloseMidway Open - Midway

Noon Individual Outstanding Senior Citizen Recognition - Mills Free Stage

1:00 P.M. to 4:30 P.M..... Vern Bishioop Moose River Band - Mills Free Stage

1:00 P.M. to 9:00 P.M..... Play Bingo - Upper Level, Curling Building

1:30 P.M.....4-H & FFA Sheep and Swine Show (Lamb Lead will follow Swine Show) - Livestock

4:00 P.M.....4-H and FFA Goat Show - Livestock Arena

6:00 P.M. to 10:00 P.M.....Alan Godage Band (Classic Country) - Mills Free Stage

7:00 P.M.....4-H Horse Drill Team Performances - Horse Arena

10:00 P.M. 4-H Livestock & Horses Released



And

Brainerd Lakes Cremation Society

Serving The Lakes Area Since 1882

www.nelson-doran.com

218-829-4755

202 NE 8th Ave, Brainerd, MN 56401



YDE'S

SALES OF USED APPLIANCES MAJOR APPLIANCES REPAIRED

- REASONABLE RATES
- FACTORY TRAINED TECHNICIANS
- IN HOME OR IN SHOP SERVICE
- OVER 54 YEARS EXPERIENCE

SERVICE & PARTS FOR ALL MAKES

1220 Oak St. Brainerd • 829-5292 • 1-888-892-5292

Hiking • Skiing • Nature • Weddings • Fun

**Your nuts if
you don't
stop by our
booth for
prizes!**



Northland Arboretum
EDUCATION • RECREATION • CONSERVATION

14250 Conservation Drive
Brainerd, MN
218-829-8770 - northlandarb.org



Coors LIGHT.



SUPPORTING THE LOCAL COMMUNITY

SUPPLY STORE OPEN TO THE PUBLIC MON-FRI 9AM-5PM

E.L. Menk JEWELERS

Celebrating 42 years

Serving your jewelry needs in the Brainerd Lakes Area

FULL SERVICE JEWELRY STORE

Diamonds • Gold • Gemstones • Graduate Gemologist

Corner of 7th and Laurel
Downtown Brainerd - 218-829-7266



Brainerd BN Credit Union

804 Laurel Street Brainerd, MN 56401

Phone 218/829-9065 • Fax 218/829-2568 • Toll Free 1-877-829-9065

SEE YOU AT THE FAIR!

SERVING OUR MEMBERS SINCE 1940



**We Provide Meaningful Arts Opportunities
For Everyone Through
ACCESS, EDUCATION, & EXPERIENCES**

Look For The You Betcha Mural In Downtown Brainerd!

ART EXHIBITS

ART SUPPLIES

LOCAL ART & HANDMADE CRAFTS

CLASSES

FREE CREATIVITY KITS

(Every Second Saturday Of The Month)

218.833.0416 | 711 Laurel St, Brainerd, MN 56401 | info@crossingarts.org

Hours: Tuesday - Friday, 10:00 AM - 5:00 PM | Saturday, 10:00 AM - 2:00 PM

Low Prices. Better Choices.
1 SuperOne
FOODS
Right in your neighborhood



Visit us at our website
www.superoneliquor.com
218-828-0256

Visit us at our website

www.superonefoods.com

7895 Excelsior Road

Baxter, MN 56425

218-828-2160

100% Freshness & Quality Guarantee!



Electricity • Security Systems
Credit Union Services
829-2827 • Brainerd

Mills Free Stage Entertainment

★ Wednesday, Aug. 4 ★ Senior Citizens Day ★

Vern Bishop Moose River Band

1:00 PM - 4:30 PM



The members of the Moose River Band and I have been playing music together for the last twenty years. We have three accomplished singers in the band who are very diverse in what they do. Our lead player has played music for fifty years, starting at age 9! He has played for Johnny Cash, Loretta Lynn and other notable artists. The band does a mixture of Country, Country Rock and Old time Rock and Roll. We love to entertain our guests and get the crowd involved throughout the show. Members of the band are: Lead singer - Vern Bishop; Lead Guitarist - Donny Johnson; Bass Player - Dave Zilbert; Keyboardist - Jody Zilbert; and Drummer - John Damjanovich.



*Alan
Godage*
&

SUNDOWN

Classic Country Music

**Appearing from
6:00 - 10:00 P.M.**

Brainerd Animal Hospital

Ryan Dutton, D.V.M.

Small Animal Medicine and Surgery

218-829-5118

2720 Oak Street, Brainerd, MN 56401



Clark Lake Homes

Independent Living Services

Residential and Community Provider for Individuals with Special Needs.

Professional & Skilled Trained Staff

Residential Foster Care Settings

Semi Independent Living Services

Living skills Assessments, Training, and Assistance

2700 Oak Street ▪ Brainerd, MN 56401

Office (218) 833-1322 ▪ Fax (218) 833-1327

You'll find us in Industrial Building #4. Stop at our booth & find out what is new at The Center.

THE Center
Active aging—join us!

803 Kingwood St., Brainerd

218-829-9345

www.thebrainerdcenter.com



Guess The Weight of the Beef

Ag Day - August 5th

Located in the Cattle Barn

Prizes Will Be Awarded



BEEF



IT'S WHAT'S FOR DINNER.®

Brought to you by the Minnesota Beef Council
in association with the
Crow Wing County American Dairy Association



Adult & Teen Challenge
Central Minnesota

NOW SERVING:

Cheese Curd, Mini-Donuts, Cotton Candy, Burgers



BREEN & PERSON LTD

Real Estate | Title Insurance
Closing Services | Estate Planning
Business Law | Personal Injury

QUALITY TITLE



J. BRADLEY PERSON

124 N. 6th Street
Brainerd, MN

218-828-1248

brad@breenandperson.com

Fair Activity Schedule

THURSDAY, AUGUST 5 - AG DAY Gary Doucette/Reilley Hettver, Coordinators - 218-821-6954

Fire Department Day at Public Safety Building featuring the County Fire Fighting Services.

Morning 4-H Livestock Change Over to Open Class

8:00 A.M. to 10:00 A.M.....	Open Class Dairy Cattle Entered
8:00 A.M. to Noon	Open Class Livestock Entered, Except Dairy Cattle
8:00 A.M. to Noon	Open Class Rabbits / and Poultry Entered
9:00 A.M.....	4-H Llama Show - Horse Arena
10:00 A.M.....	4-H Pet & Cat Show - Poultry/Rabbit Tent
10:00 A.M. to 8:00 P.M.....	Kids Kountry Open
10:00 A.M. to 10:00 P.M.....	Exhibit Buildings Open
11:00 A.M.....	4-H Livestock Demonstrations - Poultry/Rabbit Tent
11:00 A.M.	Century Farms & Agriculture Recognition - Birney Wilkins Garden
11:00 A.M.	FFA 4-H Open Class Dairy Cattle Show - Livestock Arena
Noon to Close	Midway Open - Midway
Noon to 3:00 P. M.	Open Class Pony, Mini & Bridle Path Horse, Stock Horse Halter Entries
1:00 P.M. to 3:30 P.M.....	Doug Allen Nash - Mills Free Stage
1:00 P.M. to 9:00 P.M.....	Play Bingo - Upper Level, Curling Building
2:00 P.M.....	4-H Performing Arts & Demonstrations - 4-H Building Stage
3:00 P.M. to 8:00 P.M.....	Sheep Shearing Demonstrations - Livestock Arena
3:00 P.M.....	Open Class Dairy Goat Show - Livestock Arena
4:00 P.M.....	Kids Pedal Pull - Mills Free Stage
4:00 P.M.....	In Hand Obstacle and 6:00 PM Tiny Tots Show, Horse Arena
5:30 P.M.....	Milk Drinking Relay - Livestock Arena
6:00 P.M.....	Open Barrel Run, Horse Arena
6:00 P.M. to 10:00 P.M.....	Wyld Ryce - Mills Free Stage
6:00 P.M.....	Animal Dress Up Contest - Livestock Arena
7:00 P.M.....	4-H Arts in Performance Performing Art Show Case with Karaoke- 4-H Building Stage
7:00 P.M.....	Moto Cross- Adults \$12, 12 and Under \$8, Pit Gates Open at 4:00 P.M. - Grandstand



By the Admin Building (The Old Bingo Building)

Steven Weagel with Bruce Nelson

Glassblowing Artist & Teacher

August 3 - August 7

Live Demonstrations Throughout the Day

Experience a master glassblower start from raw material and make a masterpiece!

These are informative and educational demonstrations you will enjoy!



The Weagelworks

6078 Co Rd 16

Pequot Lakes, MN 56472

218-251-1255



Follow Steven Weagel
on Facebook

Mills Free Stage Entertainment

★ Thursday, Aug. 5 ★ Senior Citizens Day ★

Doug Allen Nash

1:00 PM - 3:30 PM

Nashville recording artist Doug Allen Nash grew up on a farm in Northwestern Illinois. After a personal conversation with Johnny Cash, he was inspired to create a tribute to the musical legacies of the musical legend and June Carter Cash.

Nash captures the appearance, vocals, speech, mannerisms and spirit of Johnny Cash and introduces one of his own songs, "June," co-written and co-produced with Jeff Silverman in Nashville. The engineering mix was done by Grammy award winners John Carter Cash and Chuck Turner. The performer, writer and publisher has also scored hits internationally, with "Long Legged Guitar Pickin' Man" and "If I Give My Soul" reaching No. 5 and No. 14 on Europe's top 200 Country Chart, with airplay in more than 17 countries.

Nash, who lives in the Dallas area, has performed in more than 85 countries while touring for USO, MWR and Armed Forces Entertainment. He received the U.S. Department of Defense's Certificate of Esteem Award, Certificate of Appreciation Award and the Republic of Korea's Apple of Excellence Award. The gifted singer and showman has been inducted into the Legends of South Dakota Country Music Hall of Fame and has performed nationally, from the Las Vegas strip to major casinos and resorts like The Opryland Hotel, Sun Valley Ski Resort in Sun Valley, Idaho, Viper Room in Hollywood, Calif., and Caesars Palace in Las Vegas. In addition, Nash has opened for Wayne Newton, Charlie Daniels, Huey Lewis and the News, The Oak Ridge Boys, Montgomery Gentry, The Beach Boys and numerous other national artists.



Wyld Ryce

6:00 PM - 10:00 PM



Wyld Ryce was hugely popular in the area in the early 1980s and recorded and released two full-length albums and a 45. They reformed in 2017 with all but one original member after a nearly 30-year hiatus and have been performing regularly across the area for the past few years. Wyld Ryce plays classic 70s and 80s rock.

The band includes husband and wife John and Vicki Palmer on vocals and keyboards, respectively; bassist Craig Engelhart, guitarist Joel Jenkins, keyboardist Jim Cervin, and drummer Todd Johnson.

For more information on Wyld Ryce, visit www.facebook.com/wyldryceband

Grandstand Entertainment

MOTO X



Thursday, August 5th

Pit Gate Opens – 4:00 p.m. • Practice – 6:00 p.m.

Riders Mtg. – 6:45 p.m. • Showtime – 7:00 p.m.

Trophy & Pro Classes
Class entry fee - \$25.00

Admission...

Adult: \$13.00 12 & Under: \$8.00

Dale and Sharon Kadlec

motocity-rnr@hotmail.com • www.motocityraceway.com

There will be an additional \$10.00 charge for each additional vehicle parking in the pit area that is not pulling or hauling an event participating vehicle.

***Any contestant found to be committing rule infractions will be disqualified and may forfeit being a contestant at any Crow Wing County Fair event.*





DON'T FORGET ABOUT...

- Guess the Weight of a Steer in the Cattle Barn
- Shearing demonstrations in the Livestock Barn
- Livestock Judging throughout the day in the Livestock Arena

Come get Agri-cated

THURSDAY, AUGUST 5 | Ag Day at the Fair

10:00 A.M. to 9:00 P.M.
Guess the Weight of the Beef
Sponsored by MN Beef Council

11:00 A.M.
Century Farm and Ag Day Recognition
 at Birney Wilkins Garden

11:00 A.M.
Dairy Cattle Show
 Livestock Arena

3:00 P.M.
Shearing Demonstration
 Livestock Arena

4:00 P.M.
Kids Pedal Pull
 Mills Free Stage
put on by Brainerd FFA

5:30 (approx.)
Milk Drinking Relay and Egg Toss
 Livestock Arena
Sponsored by Hanneken Insurance

Thanks to the Crow Wing County Farm Bureau, the Crow Wing County Dairy Association, Hanneken Insurance and the MN Beef Council for Sponsoring the day's events!

UNIVERSITY OF MINNESOTA Crow Wing County Farm Families of the Year

(Sponsored and coordinated by the University of Minnesota Extension, College of Food, Agricultural, and Natural Resource Sciences, and College of Veterinary Medicine)

Award Ceremony

11:00 A.M. Thursday, August 1st | Birney Wilkins Garden - Open to the Public

• 1993 Bruce and Roseanne Caughey • 1994 Larry and Dorothy Larson • 1995 LeRoy and Dorothy Thompson • 1996 Tom and Diane Segler • 1997 Allen Ebnet • 1997 Art Ebnet • 1997 Lawrence and Edna Ebnet • 1998 Gerald and Sandra Foust • 1999 Roger and Delores Marks • 2000 Jim and Jane Hettver • 2000 Tony and Cheryl Hettver • 2001 Calvin and Shirley Wallin • 2001 John and Carolee Wallin • 2001 Edward and Gloria Weitalla • 2002 Leonard and Carleen Koering • 2002 Ronald and Barbara Nelson • 2014 Russell and Amber Weitalla & Family • 2015 Arlene & Robert Jones • 2016 Duane and Virginia Smart • 2017 John and Ruth Jansen Farm • 2018 Andy & Kris Schubert • 2019 Magnus & Krissy Nelson • 2020 Mac and Stacey Caughey Family • 2021 Louis and Megan Schlegel



Crow Wing County Fair MidWay 2021 **TODD ARMSTRONG**



Crow Wing County Farm Bureau & The Crow Wing County Fair honors



CROW WING COUNTY CENTURY FARMS

Award Ceremony & Refreshments
11:00 A.M., Thursday, August 5th
Birney Wilkins Garden • Open to the Public

1976-1993 - None

1994 - Clifford E. Borden, Merrifield (1885)
Loren & Carl Lovsted, Brainerd (1889)
George (Deceased) & Rosemary Soderman, Brainerd (1892)

1995 - Gerald & Donald Dangers, Aitkin (1887)
William & Rebecca Hansen, Brainerd (1885)
Patsy Mogensen, Brainerd (1890)
LeRoy & Dorothy Thompson, Brainerd (1892)

1996 - David & Lynn Fellerman, Aitkin (1896)
William C. Mattson, Pequot Lakes (1896)
John & Irma Hovotny, Aitkin (1896)

1997 - Elizabeth (Mrs. Olaf) Vang

1998 - None

1999 - Loretta Franz and John Franz Jr. (1887)
Ian & Gertrude Tougas (1899)

2000 - Russell & Sam Wicklund Family, Brainerd (1900)
George & Theresa Bender, Aitkin (1900)

2001 - None

2002 - Lindsey & Melissa Raddatz (1902)
Norman & Kris Olson (1893)
James & Jane Hettver (1902)

2003 - Hilding & Rita Nelson (1903)

2004 - None

2005 - None

2006 - None

2007 - Eugene & Marilyn Moritz (1907)

2008 - Gregory J. Schley (1908)

2009 - None

2010 - None

2011 - Bill & Kathy Segler

2012 - Fred Joosten (1909)

2013 - None

2014 - None

2015 - Richard & Kathy Gross (1910)

2016 - Bob & Nancy Damboway (1916)

2017 - Smart Farm

2018 - None

2019 - James & Patsy Puetz Family

2019 - Joe & Patty Voller Farm

2020 - None

2021 - Eisel Family Farm (1908)

NOTE: The year in parenthesis is the year of original ownership by a member



CLOW STAMPING COMPANY

Work where you play. Start your career today!

**Paid Vacations / Holidays / Insurance / 401K
Great Wages / Promotion Opportunities**

Apply in person or online www.clowstamping.com



BRAINERD CHAPTER Minnesota Deer Hunters Assn.



Sponsors:

Local Firearm Safety Classes
Youth Members to Forkhorn Camps
Land Purchases for Public Use
4-H Shooting Sports Programs
Conservation Education Scholarships
CPL Grants for Public Land Restoration
Archery in Schools
High School Trap Teams



TURN IN POACHERS

COME SEE US IN BUILDING 2

Fair Activity Schedule

FRIDAY, AUGUST 6 - TALENT SHOWS - TEEN DAY *Sharron Ryappy / Gary Doucette, Coordinators*

8:00 A.M.	Open Class Horses Judge
8:30 A.M.	Open Class Poultry Show - Poultry Building
9:00 A.M.	WSCA Open Pleasure Show - Horse Arena
9:00 A.M. to 11:00 A.M.	4-H State Fair Packets Available, Registrations Accepted & Questions Answered - 4-H Building
9:30 A.M.	Open Class Rabbit Show - Poultry / Rabbit Tent
10:00 A.M. to 8:00 P.M.	Kids Kountry Open
10:00 A.M.	Open Class Beef Show - Livestock Arena
10:00 A.M. to 10:00 P.M.	Exhibit Buildings Open
11:00 A.M.	"Pre-Teen" Talent Contest - Mills Free Stage
Noon to Close	Midway Open - Midway
1:00 P.M.	"Teen" Talent Contest - Mills Free Stage
1:00 P.M. to 9:00 P.M.	Play Bingo - Upper Level, Curling Building
2:00 P.M.	Open Class Sheep Show - Livestock Arena Open Class Meat Goat Show (to immediately follow Sheep show) Open Class Swine (to immediately follow Goat show)
3:00 P.M.	"Open Class" Talent Contest - Mills Free Stage
5:00 P.M.	Performance Horse Show entries (4:00-5:00 P.M.) - Horse Arena
6:00 P.M.	4-H Livestock Awards Program (following Open Class Swine Show) - Livestock Arena
7:00 P.M.	Baja Rally Races - Adults \$12.00, 12 and Under \$8.00 (pit gates open 4:0-0 P.M.) - Grandstand
7:00 P.M.	4-H Arts-In-Performance - 4-H Building Stage
7:00 P.M. to 10:00 P.M.	Arena - Mills Free Stage

Mills Free Stage Entertainment

★ Friday, Aug. 6 ★ Teen Day ★

Arena • 7pm-10pm



Arena is 4 piece Rock band from Minneapolis who performs a wide variety of classic & current hit musicas well as originals. They have performed at Moondance Jam 5 times and toured with Hairball.

Arena features breathtaking vocals, stellar harmonies and a playlist that rocks from start to finish

2021 CROW WING COUNTY FAIR

AMATEUR TALENT CONTEST

Friday, August 6th

Over \$500.00 in Cash & Prizes

Contestants Name _____

Age _____

Address _____ Phone _____

City _____ State _____ Zip _____

Contestant Signature _____

Parent Signature - (If under 18) _____

Brief Background _____

Performing to: _____

Act will Compete in (Check One)

☐ Pre-teen division (12 years and under ONLY) - August 6th @11:00 A.M.

☐ Teen division (13 years to 18 years ONLY) - August 6th @1:00 P.M.

☐ Open Division (Any Age) - August 6th @3:00 P.M.

YOU CAN ONLY ENTER ONE DIVISION

First, second and third place winners will be chosen in each division, plus a cash prize of \$100.00 for 1st place, \$75.00 for 2nd place and \$50.00 for 3rd place will be given in each division from the Crow Wing County Fair Association. 1st place winners from each division are invited to compete at the Minnesota State Fair.

We are asking that ALL participants audition by sending in a CD - please MAIL or DROP OFF your application and CD to THE CROW WING COUNTY FAIR OFFICE at the Fairgrounds in Brainerd. The DEADLINE for entries is Friday July 30th, 2021.

Appropriate clothing, language, dancing and gestures are REQUIRED for this family oriented show. There will be a four (4) minute limit on performances. Vocalists may use recorded accompaniment, provided it contains ONLY instrumental accompaniment. **ABSOLUTELY NO VOCALS** are allowed on the recording or there will be a disqualification. Also, NO cordless mics or headset mics are allowed.

Judging: Judge's decisions are final and scores are not released to contestants or the public. Contestants will be judged on: quality of performance (including selection), stage presence and entertainment value.

Bands/Heavy Equipment - If you have band gear or heavy equipment to load in, you must call the Coordinator and make arrangements. This call needs to be made at least 2-3 days in advance of the Talent Show. If you do not contact us, we will not be able to assist you.

Fair officials will determine the order of performance. The Fair retains the right to disqualify any Act it considers being detrimental to its image and well being: Obscene or profane acts or any portions will not be allowed.

Please pick up your tape or CD before you leave. All contestants are required to use the sound system provided by the fair. A sound technician is provided.

★★★★★★★★★★★★★★★★★★★★★★★★★★★★★★★★★★★★

Let’s all get our Friends and Relatives up on that Stage



★★★★★★★★★★★★★★★★★★★★★★★★★★★★★★★★★★★★

Complete the entry form and send it along with your CD to:
Crow Wing County Fair, Talent Contest, PO Box 169, Brainerd, MN 56401
Questions: Call 218-839-0270

1st place winners in each division are eligible to compete at the MN State Fair Talent Contest.

All acts advancing to the MSF County Fair Talent Contest must comply with the Minnesota State Fair rules, regardless of the originating county fair contest’s rules. If a county’s first place winner is unable to perform during the designated dates, the second place winner may advance in their place.



Grandstand Entertainment

Baja Rally Races

There will be an additional \$10.00 charge for each vehicle parking in the pit area that is not pulling or hauling an event participating vehicle.

2021



\$10.00 entry fee for each car
Pit gates open 4:00pm to 6:00 pm
Drivers Meeting 6:30 pm
Hotlaps 6:00pm to 6:25pm
**** See opposite page for rules**

ADMISSION:
ADULT: \$13.00 • 12 & UNDER: \$8.00

Classes for Friday, August 6th

- * Over 99" Wheel base - 4 cylinder, front wheel drive.
- * Small pickups - 4 and 6 cylinder, rear wheel drive
- * Powder Puff

Classes for Saturday, August 7th

- * 99" and Under Wheel base - 4 cylinder, front wheel drive.
- * 6 Cylinder Front Wheel Drive, any wheel base.
- * Powder Puff

****Double check your wheel base and motor to ensure correct night for your class,
if in doubt call Chad Erlandson at 838-5479, Jerry Koering at 851-1904,
Randy Borg at 851-0348 or Keith Borg at 851-2628 or hardwatericeracing.com**

****Trophies only, no payout - there will also be a trophy for Best Appearing Car!!**

BAJA RALLY RACE EVENT RULES

- See opposite page to determine correct class and event night for your vehicle - double check your wheelbase and motor, if in doubt, call one of the officials listed below. Rear wheel drive vans will run on Thursday with the trucks.
- Strong Roll cage- 4 point, must be welded or bolted and be fastened securely (cars and pickups), **must be made from at least a 1 1/4 inch diameter and .095' thickness**. Cage must be inside the car within two inches of the roof, and truck cages must exceed 4 inches above the roof line. This is the bare minimum, more is recommended, especially in protecting truck cab. This is for your protection due to the high amount of rollovers.
- Drivers must be 15 years of age or older, and have a valid driver's permit. The HIRA Board Members have the final say if a driver is capable of safely handling a vehicle on or off the track.
- Remove all glass including headlights and taillights. Windshield is optional.
- All roof openings must have glass removed and be tinned or plated over. No cutting or chopping of the roof.
- Helmet and seat belts must be worn on the track at all times.
- Battery tied down and covered
- Gas tank and fuel systems left in original position, or safely relocated **and securely mounted**.
- Similar to stock bumpers only, no sharp edges or over built bumpers.
- Driver's door is recommended to be welded, bolted or chained shut. If your door comes open you will be black flagged. Door bars are allowed, **Easily removable window net is recommended**.
- Four wheel drive trucks-front shaft must be removed. Four wheel drive cars-rear shaft must be removed.
- Air bags removed
- **Frame mounted tow points on front and back of car. Chain loop recommended. Not responsible for towing damage.**
- All cars must pass a safety inspection. Vehicles will be disqualified for potential safety issues.
- Number clear and readable on sides and a vertical number must be attached securely to the roof. **Roof numbers must be in white with a black background, and be at least 10" tall.** If we can't read them from a distance, you may not be scored.
- Stock suspension
- All season tires only. No snow, large lug, or mud tires. No alteration to the tires, siping is allowed.
- Radiator must stay in stock location. Front radiator and oil pan shielding allowed.
- Mud flaps are recommended for Trucks
- All loose items, garbage, etc must be removed from inside the car prior to arrival at the track.
- **No hitting in the drivers door!!!**
- During the races, all pedestrians must stay off the track! No passengers!
- Any contestant found to be committing rule infractions will be disqualified and may forfeit being a contestant at any event.
- Any un-sportsman like conduct by driver or pit crew will result in immediate removal from event with no refunds.
- All officials rulings are final.
- Read rules thoroughly, just because a car has ran previously doesn't mean it will pass inspection.

CARE FOR EACH OTHER

BAXTER CLINIC & URGENT CARE (7 days a week)

218-828-7100 | 13060 Isle Dr.

BRainerd CLINIC | 218-828-7100 | 2024 S 6th St.

CONVENIENT CARE (7 days a week) | 218-454-5802

Cub Foods, 14133 Edgewood Dr., Baxter

Cub Foods, 417 8th Ave. NE, Brainerd

CROSSLAKE CLINIC | 218-692-1010 | 35205 CR 3

EMILY CLINIC | 218-763-4800 | 20918 CR 1

HACKENSACK CLINIC | 218-675-5044 | 110 3rd St. S

PEQUOT LAKES CLINIC | 218-568-4416

4317 Woodman St.

PIERZ CLINIC | 320-468-2587 | 138 Main St.

PILLAGER CLINIC | 218-746-4527 | 680 Pillsbury St. N

PINE RIVER CLINIC | 218-587-4416 | 415 Barclay Ave.

ORTHOPEDICS & REHABILITATION CLINIC

218-829-7812 | 2016 S 6th St., Brainerd

ST. JOSEPH'S MEDICAL CENTER | 218-829-2861

523 N. 3rd St., Brainerd



Essentia Health

EssentiaHealth.org

Building Quality Homes in the Lakes Area



HYTEC
CONSTRUCTION

RESIDENTIAL • COMMERCIAL

WWW.HYTECCONSTRUCTION.COM

218-829-8529

CL Distributing

**BUD
LIGHT.
SELTZER**

**BUD
LIGHT.**

**Serving the
Brainerd Lakes Area**

**SURFING
WORKING
LEARNING
CONNECTING
STREAMING
SHOPPING
GAMING**

**Here for all the
“INGS” in your life!**

Internet | TV | Phone
218-454-1234 | goctc.com

CTC

Fair Activity Schedule

SATURDAY, AUGUST 8 - KID'S DAY

Kris Doucimo & George Burton, Coordinators

Special activities from 10:00 A.M. on to include Stuffed Animal give-a-way, Dig for Coins, Bike Give-a-way, Antique Tractor Parade hosted by the Old Homestead Power Tractor Club, and more to do all day.

8:00 A.M. WSCA Open Game Horse Show - Horse Arena
 9:00 A.M. to 11:00 A.M. 4-H State Fair Show Packets Available, registrations accepted, and Questions Answered - 4-H Building
 10:00 A.M. Tractor Driving Contest - North End Grandstands
 10:00 A.M. Exhibit Buildings Open
 10:00 A.M. Racing Derby - Curling Building
 10:00 A.M. to 11:30 A.M. Brainerd Fire Department Ladder Truck - Curling Building
 10:00 A.M. to Noon. Final Coloring Contest (Exhibitors Guide) Entries Accepted - Administration Building
 10:00 A.M. to 8:00 P. M. Kids Kountry Open
 10:00 A.M. to 2:00 P.M. Home Depot Workshop for Kids - Curling Building
 10:00 A.M. Dig for Coins - Curling Building
 10:30 A.M. to Noon Facepainting - Curling Building
 11:00 A.M. 4-H Premier Showmanship Competition - Livestock Arena
 11:00 A.M. Treasure Hunt - Curling Building
 Noon to 1:00 P.M. Free Stuffed Animal Drawings Throughout the Day - Information Building
 Noon to Close Midway Open - Midway
 1:00 P.M. 4-H Livestock Interviews - 4-H Building
 1:00 P.M. to 9:00 P.M. Play Bingo - Upper Level, Curling Building
 2:00 P.M. Miss Brainerd Lakes, Princess
 3:00 P.M. to 4:00 P. M. 4-H Dog Exhibition - Mills Free Stage
 4:30 P.M. to 6:00 P.M. Ray's Promenaders (Square Dancing) - Mills Free Stage
 5:00 P.M. 4-H State Fair Livestock Meeting - Livestock Arena
 6:00 P.M. to 9:00 P. M. Premium Checks Available - Information Booth
 7:00 P.M. to 10:00 P.M. Wayne Renn Band - Mills Free Stage
 7:00 P.M. State Fair Paperwork Due
 7:00 P.M. Baja Rally Races - Adults \$12.00, 12 and Under \$8.00 (pit gates open 4:00 P.M.) - Grandstand
 8:00 P.M. to 10:00 P.M. 4-H Animal & Static Exhibits Released
 10:00 P.M. Industrial Building Vendors Released

Serving You Since "1940"
 Plumbing, Heating & Cooling Contractors



PIKE PLUMBING & HEATING
 218-829-4332

830 Brook Street ★ Brainerd, MN 56401
pikeplumbingandheating.com • pikeplum@brainerd.net



*'Where you are always
 treated like a winner'*

**Proud to supply the trophies at the
 Crow Wing County Fair**

**Phone (218) 838-3779 | winnersengraving.com
idgetags@winnersengraving.com**

Kathy Binder



**Take time this year
 to treat your kids to
 Kids Kountry and
 the FFA Kiddie
 Barnyard**



**Looking for a supplier
 for your gas needs?
 Commercial • Home • Hobby
 Medical • Beverage Gases**

**WE ARE the supplier for all your equipment,
 consumables & Industrial gas needs.**

**Across from Fair Grounds, 1223 Wright Street
 218-829-3391**

M-F 8 am - 5 pm

Your local welding supplier for over 40 years



**Brainerd
 Wadena
 218-829-4196**

Serving the Entire Brainerd Lakes Area for Over 60 Years

THELEN
HEATING & ROOFING INC.



**Heating.
 Ventilation.
 Air Conditioning.
 Sheet Metal Fabrication.
 Commercial Roofing.**

218.829.1491

1717 13th St. SE. Brainerd, MN 56401 www.thelenheating.com

Mills Free Stage Entertainment

★ Saturday, Aug. 7 ★ Kids Day ★



★ "RAY'S PROMENADERS" ★

4:30 pm- 6:00 pm

Square Dancing

Wayne Renn Band

Saturday • 7:00 PM - 10:00 PM



I SAW IT IN MINNESOTA

**Ben and Dylan Semler
Custom Chainsaw Log Carvings**

*Be amazed by the
realistic carvings they
produce with a chainsaw.*

**Live demonstrations throughout:
August 3rd - August 7th**



When the chain saw is running you will know where to find us!
www.isawitinmn.com or call 763-286-4642

SATURDAY, AUGUST 7



STUFFED ANIMAL GIVE AWAY

Register at the Administration Building. Drawings will be held at Noon.

DIG FOR COINS

Join us at the Curling Building to dig for coins. Kids 10 years and under. Begins at 10:00 a.m.

RACING DERBY

Come race a RC car at the Curling Building. Prizes for every racer. Races start at 10:00 a.m.

COLORING CONTEST

Kids, color the picture found in this year's Exhibitor Book or pick up a copy at the Administration Building and drop off the picture at the Administration Building. Prizes awarded at 1:00 p.m.

TREASURE HUNT

Look for the hidden treasure at the Curling Building. Begins at 11:00 a.m.

BIKE GIVE AWAY*

Register at the Administration Building to win one of several bikes to be given away.
Drawing at 12:30 p.m. Bike helmets sponsored by Essentia Health

BRAINERD FIRE DEPARTMENT

Ladder truck will be here for you to explore at the Curling Building 10:00 a.m. to 11:30 a.m.

FACE PAINTING

From 10:0 a.m to Noon at the Curling Building

HOME DEPOT WORKSHOP

Come work with the experts from 10:00 a.m. to 2:00 p.m.
All participants will take home their project. Workshop located in the Curling Building

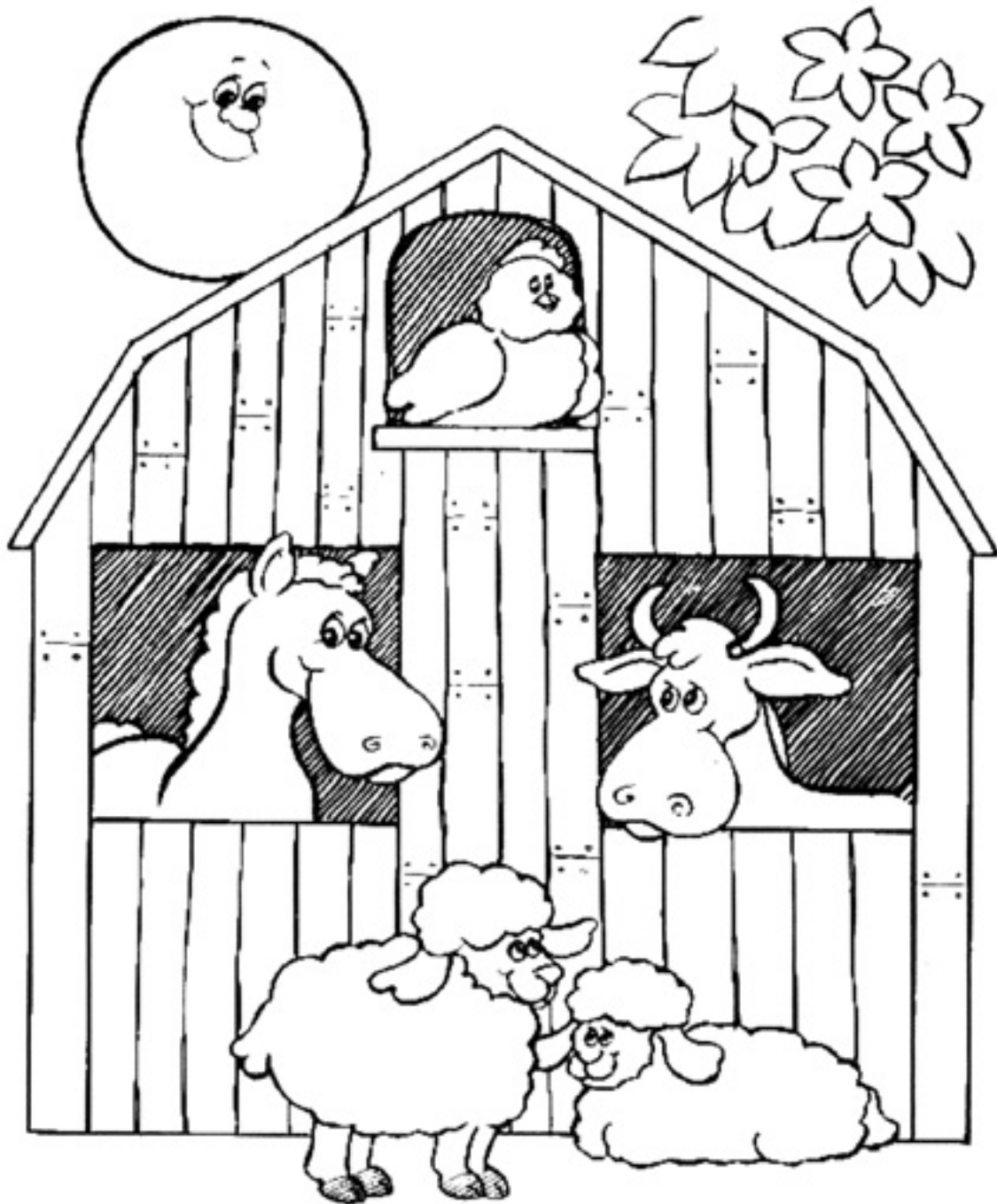
MODEL TRAIN CONDUCTOR - MODEL TRAIN DISPLAYS

WATER COLOR PAINTING ART STATION

Come paint a picture to take home from 10:30 a.m. to 12 p.m.

**THANK THESE BUSINESSES FOR
THEIR SUPPORT OF THE
FAIR & THE COMMUNITY**





2021 CROW WING COUNTY FAIR COLORING CONTEST

Age groups: 3 & under / 4-5 yrs. old / 6-7 yrs. old / 8-9 yrs. old / 10 and older

Please bring your completed coloring page to the Administration Building on the Crow Wing County Fairgrounds between Tuesday, August 3 and Saturday, August 7, by Noon. Winners will be announced Saturday, August 7, around 1:00 p.m. at the Administration Building. No need to be present.

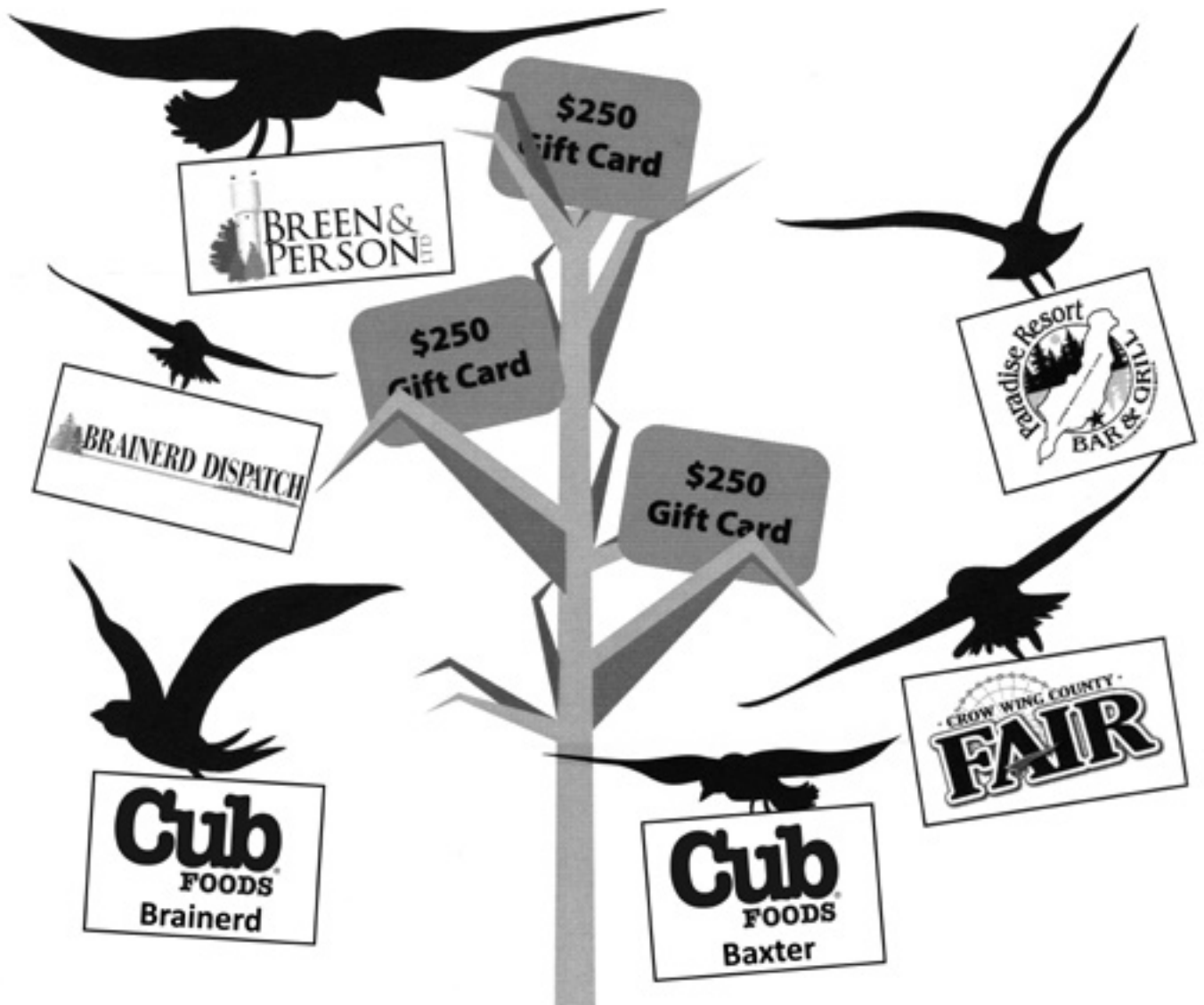
NAME: _____

AGE: _____

PHONE: _____

ADDRESS: _____ CITY: _____

THANK YOU TO THE FOLLOWING SPONSORS:



Daily Drawing for \$250 Gift Card

**Drop off entries at Crow Wing County Fair
Administration Building during the week of the Fair.**

**Must be at least 18 years old to register.
Daily entries required. Winners will be contacted.**

BEER GARDEN

This Year At The Fair

2 Locations
by the Free Stage and
at the Grandstands
(during shows only)

Everyone Will
Be Carded

Beer Must Stay
Inside Designated Area



Beer Sold By
Brainerd Legion
Brainerd VFW



**BUD
LIGHT.**

**Enjoy
Responsibly**



Lakeland ***NEWS***

LOCAL News
LOCAL Weather
LOCAL Sports

Monday – Friday at 10:00 p.m.

**Repeated Tuesday – Saturday at 5:00 a.m., 5:30 a.m. & 6:30 a.m.
and on Channel 22 on DISH and DIRECTV Satellite!**

Get the free PBS Video App

Roku

Apple TV

fireTV

androidtv

**GET IT ON
Google Play**

**Download on the
App Store**

LPTV.ORG

news@lptv.org and calendar@lptv.org



19th Annual

GRASS DRAGS & SWAP MEET

Presented by: Brainerd Snodeos & Bud Light

September 18-19, 2021

Friday, Sept. 18th

Gates Open @ Noon

Test & Tune @ 6pm

(\$5.00)

**\$10 for Insurance
& \$10 per Class**

Saturday, Sept. 19th

Racing Starts @ 11am

Swapper Gates Open @ 7am

General Admission Gates Open @ 9am

**-GENERAL ADMISSION-
\$5 Per Person
12 and Under FREE**

Swappers, Racers, Vendor & Ad Sales
info contact George @ (218)829-8922 Days
(218)820-4392 Cell
or email @ norpac@brainerd.net



FREE CONTINENTAL BREAKFAST

**SPA • HOT TUB
JACUZZI SUITE**

SPACIOUS LOBBY, & FIREPLACE

Toll Free Reservations: 1-800-225-3297

**Phone: (218) 829-3080
Hwy. 371 North, 14466 Dellwood Drive, Baxter, MN 56425**



**Fitness Center
Free Breakfast
Free Parking
Free WiFi
Hot Tub Onsite
Pool-Indoor
Sauna**

**Phone: 218-822-1133
7208 Fairview Road | Baxter, MN 56425**

Brainerd Hubbard Radio Welcomes you to the Crow Wing County Fair!

*Proud to Serve our Lakes Area Everyday...
and Half the Twin Cities on the Weekends!*





GENERAL RULES

1. Rules and regulations will be strictly adhered to.
2. The Crow Wing County Fair is open to all exhibitors who reside in the State of Minnesota. In 4-H Club divisions, exhibitors must reside in the County except those who live outside the County but are affiliated with the Crow Wing County Federation.
3. All entries must be in the name of the bona-fide owners, except 4-H Club entries which will be accepted if in compliance with 4-H Club rules. Grains and canned goods must have been raised, made or processed by the exhibitor during the past year.
4. Every article in competition must correspond in number and description with the premium list and be in its proper department, class and lot in order to obtain a premium. If in doubt, the Clerk may offer suggestions and give help, BUT THE RESPONSIBILITY OF DETERMINING THE PROPER CLASSIFICATION SHALL REST ON THE EXHIBITOR.
5. Each entry tag shall be securely fastened to the entry itself, or to the stall, pen or receptacle in which it is shown.
6. Premiums will not be paid on articles or animals removed from exhibition before the official dismissal time, except as provided for.
7. Any exhibit removed from the fairgrounds (after being entered) before the approved date, unless directed to do so by a Crow Wing County Fair Official may forfeit exhibiting privileges in future years and premiums.
8. The Association will take every precaution in its power for the preservation of articles and stock on exhibit, but will not be responsible for any loss or damage that may occur in the delivery, exhibition and removal of exhibits.
9. The Fair Association disclaims any responsibility for accidents caused by animals on exhibit.
10. Any interference by exhibitors to influence or dictate the decision of the judges or Crow Wing County Fair Officials will be sufficient reason to disqualify the person's exhibit, and should be reported to the Fair Manager through the Superintendent of the department. Those exhibitors shall forfeit exhibiting privileges at future Crow Wing County Fairs.
11. Premiums will not be awarded to articles without merit even though there is no competition for the premium. The judge may award no premium, second or third premium according to the merit of the exhibit, stating the reason in writing when requested.
12. Lost, damaged or unclaimed ribbons will not be replaced.
13. Special premiums may be offered by interested persons for entries which conform to the general classification of the Fair Association.
14. The Fair Association reserves the right to relocate community and project booths if necessary, but the Association will make every effort to allot the same booth to the same group each year if the group participates each year.
15. Open Class Horses box stalls will be \$10.00, Open Class Cattle, Open Class Sheep, Open Class Swine, Open Class Goats, \$2.00 per Olpoetn. Class Rabbits & Poultry \$1.00 per lot.
16. No exhibits will be accepted for competition which not listed in the premium list. Exhibits of a noncompetitive nature may be made with the approval the Superintendent or Fair Manager.
17. The Board of Directors reserves the final and absolute right to interpret these rules and regulations and determine all matters, questions and differences regard there to, or otherwise arising out of or incident to the Fair. The Fair Management shall have the right to reject or remove any exhibit which it considers for public exhibition.
18. PROTESTS Protests must be made in writing and be accompanied by a fee of \$25.00. All appeals and protests will be settled by the Fair Board at the meeting of the Board, when all parties involved will heard.
19. In order to keep our grounds and buildings neat and clean, no gummed-backed material can be distributed from any booth or displayed on the fairgrounds.
20. No truck or trailer on which a sign has been constructed, will be allowed to park within 300 feet any gate.
21. NO PETS allowed on grounds except Certified Service Animals for individuals with disabilities
22. No animals or livestock may be sold or given away the fairgrounds.
23. Exhibitors who have been found to be committing rule infractions will be asked to remove their exhibits exhibition and may have showing privileges revoked future county fairs.
24. Exhibits left after fair. Any person, corporation owning any property left on the grounds after the of the Fair without having approval of the Fair Board leave the same, shall forfeit the same to the Fair for disposal.

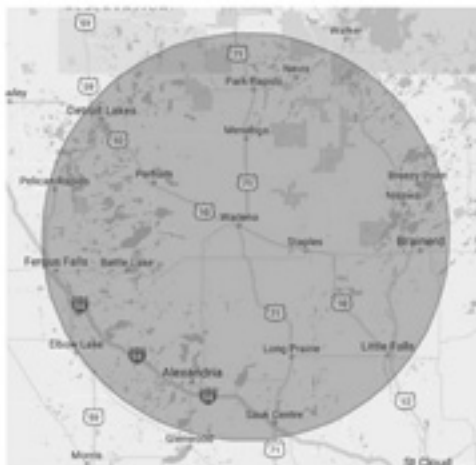
HUBBARD RADIO



ONLINE
SUPERSTATIONK106.COM

The best country of the 90's, 2,000's and today.

AFFILIATES OF



ONLINE
KWADAM920.COM

Classic country & information.

AFFILIATES OF



ONLINE
THEFANAM1430.COM

The leader in Minnesota Sports coverage.

AFFILIATES OF



Procedure For Claiming



Premium Checks...

1. Premium checks will be distributed on the LAST DAY of the fair from 6:00 P.M. to 9:00 P.M. from the Fair Administration Office. 4-H premium checks will be distributed later thru Extension office.
2. All exhibits and premium checks that are not picked up on the last day of the fair will be available at the Crow Wing County Fairgrounds Administration Building through Wednesday, August 11th, 2021 until 3:00 p.m.
3. If there is any discrepancy in your premium check, please fill out a discrepancy form from the Information Booth. Discrepancies will be resolved within 2 weeks.
4. CASH PREMIUM CHECKS PROMPTLY. CHECKS WILL NOT BE HONORED AFTER 90 DAYS OF DATE THE CHECK WAS ISSUED.



Exhibits...

1. Exhibits will be released at 9:00 P.M. the LAST DAY of the fair except 4-H livestock & horses. 4-H livestock & horses may be removed at the end of the SECOND DAY of the Fair.
2. Saturday – the Fine Arts, Youth Arts & Photography Building will be cleared of patrons at five minutes to 9:00 P.M. At 9:00 P.M. exhibitors will be admitted individually to claim exhibits. Fine Arts & Youth Arts Buildings will be open Sunday, August 8th, Noon - 3 P.M. Monday, August 9th through Thursday, August 12th, 9 A.M. - 3 P.M. exhibits can be picked up in Administration Building.
3. Present the claim check to the person in charge. NO EXHIBIT SHALL BE RELEASED WITHOUT THE CLAIM CHECK.
4. YOUTH ARTS & FINE ARTS - All entries MUST be pre-registered by Friday, July 30, 2021

www.fallsradio.com

AM960 KLTF

***Your Station For
News & Information
Stream on www.fallsradio.com***

FM94

94 ROCKS *Now Streaming!*
More music, More variety!

Now Streaming!



WYRQ⁹²
OUR COUNTRY

**YOUR FM
HOME**



***The best country music, played 24 - hours a day.
With local news, weather, and sports.***

Crow Wing County Fair Demolition Derby Full Size Limited Weld Class

Full size passenger cars and wagons allowed, except for suicide Lincolns, Imperials, Imperial frames, or Sub frames, or K frames, and GM round back wagons. No 2003+ FoMoCo.

Body:

- All hoods must be open for inspection. Hoods and trunks must have a 12"x12" hole for inspection, and for fire access. Header holes in hood satisfy this requirement.
- You may use 6 bolts to hold the hood shut, 4 of which may go through the frame with a standard industrial flat washer, or be welded to the top of the frame, but not act as a kicker. Core support bolts may be 1". Hoods may be folded over core support. Doors may be welded solid with 3"x1/4" flat bar max, or chained with 4 chains per door.
- Trunks may be welded shut with 3" x 1/4" flat bar, and (2) 1/4" bolts going through the frame using standard industrial washers, or welded to the side of the frame. You may tuck your trunk lid into the trunk, leaving at least 50% in factory location. **NO REAR WINDOW BARS ALLOWED!**
- Body mounts can be removed, and replaced with a 3/4" bolt, and 4"x4"x114 flat washer. You may add 4 extra body bolts in the passenger compartment, to body tin only, and not to be used as kickers.
- Two front window bars allowed and recommended, no bigger than 3"x 3/4" flat bar.

Cage:

- All cage material must be 6" diameter max. You're allowed 1 dash bar, and one bar behind the seat, with 6"x6" plates to attach to the body tin only. Behind the seat bar may have two kickers making an "X" down to the inner rocker on each side, with 6" plates on each end.
- You may run one door bar on each side from the dash bar, to the bar behind the seat.
- You are allowed (1) downbar to attach from door bar to the frame. Downbar must remain within the front door seams.
- You may run a gas tank protector off of your rear seat bar, must be at least 4" off of the floor, and must not touch the package tray area.
- Halo/roll bars are allowed. Halo must be located no further back than 8" from the driver seat.

Frame & Bumpers:

- Frame may be shortened to the front side of the core support mount. Mount must remain in place
- Frame seams may be welded, single pass, 1/2" wide bead. **TOP SEAM ONLY.**
- No stuffing of the frame.
- No hump plates.
- You may use any make/model passenger car bumper. Bumpers may be stuffed. Bumpers may be fully seam welded, and holes may be capped. No homemade Bumpers.
- Top of Frame may be welded fire wall forward
- Bumper bracket or bumper shock must remain stock to

the make and model of the car you are running. Bumper brackets may be welded to the top, bottom or side of the frame rail, extending no further back than the front most point of the upper control arm mount on frame.

REPAIR PLATE RULE: Fresh Cars (4) 4x6x1/8"

Plates must be 1-inch apart including the weld; 'A' weld max. They Cannot touch or be attached to the driveline component at all

Pre Ran : (8) 4x6x1/8"

Plates must be 1-inch apart including the weld; 1/2' weld max. They cannot touch or be attracted to the driveline components at all **(A hole must be drilled or a portion must be left unwelded to verify thickness used)**

Suspension:

- Suspension may be solid. The front may be welded at the control arm only with two pieces of 2"x5"x 1/4" strap per control arm, welded from control arm to frame.
- Leaf spring cars may have a max of 7 springs per spring pack, you may add 4 spring clamps per side.
- Coil spring cars may double rear coil springs.
- No Leaf spring conversions.
- Rear control arms may be reinforced.
- Ball Joints and tie rod ends may be replaced with stock automotive replacements. Tie Rods may be reinforced.

Driveline:

- ANY Engine/transmission combination may be used.
- 8 lug rear end max. Braced rear ends are allowed.
- Lower cradles and pulley protectors are allowed, but only for mounting the engine. It may be welded or bolted in two spots, to factory-like motor mounts. No midplates allowed. You may also weld the motor down in 2 spots, between pulleys and carburetor with no more than 2" of weld on the frame.
- Aftermarket steel bell housing OR transmission protector is allowed, but not both. No Steel tail shafts.
- If running a transmission brace, transmission must remain free floating. You are allowed one loop of 3/4" chain to secure to the crossmember. Transmission brace may not strengthen the car nor be locked in.
- Slider driveshafts are allowed
- You may run either a radiator, or radi-barrel, in stock location. Radi-barrels may NOT be welded into position. It may be bolted to the radiator saddle/core support tin. It must be vented under the car in a safe manner.
- Transmission coolers are allowed, and must be welded or bolted with 3/4" bolts, max, to either body tin, or cage, not both.

Rust Repair:

- CALL FIRST

CHAIN STOCK RULES FOR 2021

Big Cars

1. Any make and model except no Chrysler Imperials.
2. Tires that are 14 or 15 inch only; max 6 ply. No split rims allowed.
3. 4 extra sub bolts allowed; no bigger than 3/4 inch.
4. 4 hood pins allowed-2 to frame only and 4 trunk bolts allowed. Can use chains, but no larger than 1/4 inch bolts.
5. Would like bumpers welded on for safety issues. No homemade bumpers factory only.
6. Battery must be bolted down and covered. No ratchet straps or bungee cords holding battery down.
7. Can run a halo in car for rollover safety.
8. Can run dash bar plus X brace behind driver's seat and also inside door bars allowed on both sides. Driver's side door bar can go from dash bar to the back seat. Pass door bar can only go from dash bar to X brace behind seat.
9. No plastic fuel tanks. Metal or aluminum tanks only.
10. Must run stock radiator. No radiator barrels or water barrels in back seat.
11. May run zoomies or exhaust through hood if wanted.
12. May run any engine in any car make and model, but no engine cradle.
13. Both driver's side doors may be welded or chained.
14. Passenger doors and trunk and hood may be bolted or chained only. No welding.
15. Wheel well lipps may be wired or bolted only. No welding.
16. May weld door window netting, but no windshield or rear window bars.
17. All glass and trim molding must be removed from car before run.
18. Must have factory seat belts or may run aftermarket 5-point harness.
19. No trailer hitches at all.
20. May run transmission cooler, but must be secured well.
21. Pre-run cars may straighten bent frames and plate them no thicker than frame and thickness only plate linch post end repair on both sides.
22. Bumpers may not be capped must be open on both ends.
23. Must run roof sign with car number

Compact Rules

1. Any make and model with max wheel base of 105 inches.
2. Tires that are 14 or 15 inch only; max 6 ply.
3. Can run 4 hood pins or chains. 2 pins to the frame only and 4 trunk pins. No bigger than 3/4 threaded rod.
4. May run tranny cooler; must be secured in a metal or aluminum container.
5. Both driver's side doors may be welded. Passenger doors chained or bolted--no welding.
6. Can run dash bar and behind seat bar plus a bar from dash bar to back seat location driver's side only. Can run passenger side door bar from dash bar to behind seat bar.
7. Battery must be covered and secured with bolts or welded battery box. No ratchet straps or bungee cords.

Demolition Derby Supplementary Rules

Entry Fee per car is \$40. Includes the driver.

Pits open at 4 P.M.

Drivers must wear a Helmet, seat belt, eye protection, shirt and pants.

Fire extinguisher must be mounted within reach of driver.

No hits in the driver's door, automatic disqualification.

Driver's door must be painted a different color than the car.

Must make aggressive hits every 60 seconds.

Officials and tech inspectors have final decision on all rules.

All glass must be removed.

All cars must have working brakes.

Drivers to remain in cars and seat belted until official tells them it's safe to exit.

Any open doors or fire will be automatic disqualification.

If a head on hit ends the derby the last car running and moving wins.

You enter the Demolition Derby at your own risk with the understanding that you could have injury, harm or death.

All participants will sign a waiver at the pit gate.

2021 CROW WING COUNTY FAIR DEMOLITION DERBY — DRIVER AND VEHICLE ENTRY FORM

Entry Fee: \$40

Name: _____

Age: Date of Birth: _____

Mobile Phone: _____

Email Address: _____

Street Address: _____

City: State: Zip: _____

Select Class: FULL SIZE LIMITED WELD, CHAIN STOCK COMPACT

Vehicle Year: _____

Model: _____

Make: _____

ENTRY FORM. Make checks payable to: CROW WING COUNTY FAIR. The entry fee is non-refundable.

The entry fee of \$40 is for driver. Mail to P.O. Box 169 Brainerd MN 56401 Attn: K.D.

In consideration of your accepting this entry, I hereby for myself, my heirs, executors, and administration, release and forever discharge the CROW WING COUNTY Agricultural Society (dba: CROW WING County Fair), co-sponsors, their agents, servants and persons, connected with their competitions of and from many and all rights, demands, damage, and actions whatsoever that I may have and loss, damage, or injury sustained by me during said competitions.

Driver's Signature: _____

Date: ____/____/____ If less than 18 years of age, parent or legal guardian must sign this form and both signatures must be notarized:

Parent Signature: _____

Date: ____/____/____

Subscribed and sworn to me before this _____ (date) of _____ (month), 2020.

Notary: _____

Notary Stamp: _____

FAIR OFFICIAL USE ONLY:

Amount Paid: _____

Cash / Check #: _____

Received By: _____

Date Received: _____

Conf. date / Initial: _____

NSCA O-MOK-SEE Open Show
Friday, August 6th, 2021
5:00 PM to 10:00 PM
@ the Crow Wing County Fair

Family Friendly and Beginners Welcome!
****4-H riders of all ages and horses are welcome to join the fun!!**



1. 3 Pole Weave (11 & Under)
2. 3 Pole Weave (Sr. Women)
3. 3 Pole Weave (12-15)
4. 3 Pole Weave (Men)
5. 3 Pole Weave (Women)

6. Half 8 Race (11 & Under)
7. Half 8 Race (Sr. Women)
8. Half 8 Race (12-15)
9. Half 8 Race (Men)
10. Half 8 Race (Women)

11. Polo Turn (11 & Under)
12. Polo Turn (Sr. Women)
13. Polo Turn (12-15)
14. Polo Turn (Men)
15. Polo Turn (Women)

16. Top N Turn (11 & Under)
17. Top N Turn (Sr. Women)
18. Top N Turn (12-15)
19. Top N Turn (Men)
20. Top N Turn (Women)

21. Just N other Pair (12-15) 2 Person Team
22. Just N Other Pair (Adults) 2 Person Team

23. Speed Barrels (11& Under)
24. Speed Barrels (Sr. Women)
25. Speed Barrels (12-15)
26. Speed Barrels (Men)
27. Speed Barrels (Women)

28. 360-Eight Race (11 & Under)
29. 360-Eight Race (Sr. Women)
30. 360-Eight Race (12-15)
31. 360-Eight Race (Men)
32. 360-Eight Race (Women)

33. Flag Race (11 & Under)
34. Flag Race (Sr. Women)
35. Flag Race (12-15)
36. Flag Race (Men)
37. Flag Race (Women)

38. Western Relay (Open) 4 person team

Patterned Horse Racing - we run 3/30 ft lanes with individual timers for a fast paced event

- ~ High Point Awards and Placing to 6th Place
- ~ Points are on rider- not horse and rider combination
- ~ Rider may only run once in each event
- ~ Same horse may be used for different age groups
- ~ Ride at your own risk! Crow Wing County Fair is not responsible for ANY accidents, thefts or damage.

- * Negative Coggins required
- * NSCA Rules Apply
- * Western Equipment Required
- * Collared shirt, jeans, western boots required

Crow Wing County Fairgrounds /2000 SE 13th Street Brainerd, MN 56401
 For More Information Visit: <http://crowwingcountyfair.com>
 Monica (763) 639-8443 or Becky (320) 293-1027

Age Groups: 11& Under 12-15 Men (16 & Over) Women (16-34) Sr. Women (35+)

Show Fees: \$3 per class/per person- \$3 Office Charge/ per person

Overnight camping and stalling available Contact: Jenny Peterson 218-820-7655 samuelboone595@gmail.com

NSCA O-MOK-SEE Open Show

Friday, August 6th, 2021
Crow Wing County Fair Grounds 5:00-10:00 pm

ENTRY FORM

1. 3 Pole Weaving (11 & under)
2. 3 Pole Weaving (Sr. Women)
3. 3 Pole Weaving (12-15)
b) _____ name
4. 3 Pole Weaving (Men)
person
5. 3 Pole Weaving (Women)
a) _____ name

AGE GROUPS:

11 & under

12-15

Men (16 & over)

Women (16 & 34)

Sr Women (35+)

6. Half 8 Race (11 & under)
7. Half 8 Race (Sr Women)
8. Half 8 Race (12-15)
9. Half 8 Race (Men)
10. Half 8 Race (Women)
11. Polo Turn (11 & under)
12. Polo Turn (Sr Women)
13. Polo Turn (12-15)
14. Polo Turn (Men)
15. Polo Turn (Women)

16. Top N Turn (11 & under)
17. Top N Turn (Sr Women)
under)
(Sr Women)
18. Top N Turn (12-15)
19. Top N Turn (Men)
20. Top N Turn (Women)

21. Just N other Pair (12-15) 2 person
a) _____ name

22. Just N other Pair (Adults) 2

- b) _____ name

23. Speed Barrels (11 & under)
24. Speed Barrels (Sr Women)
25. Speed Barrels (12-15)
26. Speed Barrel (Men)
27. Speed Barrels (Women)
28. 360-Eight Race (11 & under)
29. 360-Eight Race (Sr Women)
30. 360-Eight Race (12-15)
31. 360-Eight Race (Men)
32. 360-Eight Race (Women)

33. Flag Race (11 &

34. Flag Race

35. Flag Race (12-15)

36. Flag Race (Men)

37. Flag Race (Women)

38. Western Relay Open (4 person team)

- a) _____
- b) _____
- c) _____
- d) _____

Name: _____ Horse _____
Address: _____
Phone: _____ Email: _____

2021 CRPW WING COUNTY OPEN WSCA HORSE SHOW

Name: _____ Exhibitor # _____
 Address: _____
 Exhibitors Age (as of Jan 1) _____ Horse name: _____
 COGGINS CHECKED _____ yes no _____

Circle the classes you would like to enter:

Friday Aug. 6, 2021 Pleasure Only

- | | |
|---|------------------------------|
| 1 P.W. Showmanship Halter* | Senior+....35 yrs. and up |
| 2. Jr. Showmanship Halter* | Seniors.....18 yrs-34yrs |
| 3. Int. Showmanship Halter* | Int..14 yrs. – 17 yrs |
| 4. Sr. Showmanship Halter* | Jr. 11 yrs-13 yrs |
| 5. Sr+ Showmanship Halter* | PW. 10 yrs & under |
| 6. PW. English Pleasure* | |
| 7. Jr. English Pleasure* | |
| 8. Int. English Pleasure* | Royalty rides can be |
| 9. Sr. English Pleasure* | done if we have participants |
| 10. Sr+ English Pleasure* | |
| 11. PW English Equitation* | |
| 12. Jr. English Equitation* | |
| 13. Int. English Equitation* | |
| 14. Sr. English Equitation* | |
| 15. Sr+ English Equitation* | |
| 16. Walk Trot 10 & under (Western Pleasure) | |
| 17. Walt Trot 11 & over (Western Pleasure) | |
| 18. Lead Line 6 yrs. & under | |
| 19. PW Western Pleasure* | |
| 20. Jr Western Pleasure* | |
| 21. Int. Western Pleasure* | |
| 22. Sr. Western Pleasure* | |
| 23. Sr+ Western Pleasure* | |
| 24. Non-Stock Type Western Pleasure* | |
| 25. 2 & 3 yr. old Western Pleasure* | |
| 26. PW Western Horsemanship* | |
| 27. Jr. Western Horsemanship* | |
| 28. Int Western Horsemanship* | |
| 29. Sr Western Horsemanship* | |
| 30. Sr+ Western Horsemanship* | |
| 31. Open Costume Class | |

Riders assume all responsibility for loss or injury during
 The course of this event, and holds harmless Crow Wing
 County Fair

Saturday Aug. 7, 2021 Games Only

1. Egg/Spoon 17 yrs. & under
2. Egg/spoon 18 yrs & over
3. PW Pole Weaving*
4. Jr Pole Weaving*
5. Int. Pole Weaving*
6. Sr. Pole Weaving*
7. Sr+ Pole Weaving*
8. Side Pot Poles (times from 3-7)
9. PW. Key Race*
10. Jr Key Race*
11. Int. Key Race*
12. Sr. Key Race*
13. Sr+ Key Race*
14. PW. Barrels*
15. Jr. Barrels*
16. Int. Barrels*
17. Sr. Barrels*
18. Sr+ Barrels*
19. Side Pot Barrels (time from 14-18)
20. PW Jumping Figure 8*
21. Jr. Jumping Figure 8*
22. Int. Jumping Figure 8*
23. Sr. Jumping Figure 8*
24. Sr+ Jumping Figure 8*
25. PW Speed Dash*
26. Jr Speed Dash*
27. Int. Speed Dash*
28. Sr. Speed Dash*
29. Sr+ Speed Dash*
30. Open Ribbon Race
31. Rescue Race

Signature of rider or parent/guardian _____ Date _____

Friday Aug. 6 -9:00 am

DEPARTMENT 200 CLASS 14

Entry Fees: \$5.00 per class, per horse & rider combination ****NO REFUNDS****

* means qualification for high point

show rain or shine

Ribbon's 1st-6th place pay back 1st place...\$8.00 2nd place...\$5.00 3rd place....\$3.00

Coggins is required and must be presented at the time of registration

WE RESERVE THE RIGHT TO COMBINE, SPLIT OR CANCEL CLASSES

Saturday Aug 7 -8:00 am

DEPARTMENT 200 CLASS 15

WSCA OPEN PLEASURE SHOW

PLEASURE ONLY

- | | |
|-----------------------------|------------------------------|
| 1 P.W. Showmanship Halter* | Senior+....35 yrs. and up |
| 2. Jr. Showmanship Halter* | Seniors....18 yrs-34yrs |
| 3. Int. Showmanship Halter* | Int..14 yrs. – 17 yrs |
| 4. Sr. Showmanship Halter* | Jr. 11 yrs-13 yrs |
| 5. Sr+ Showmanship Halter* | PW. 10 yrs & under |
| 6. PW. English Pleasure* | |
| 7. Jr. English Pleasure* | |
| 8. Int. English Pleasure* | Royalty rides can be |
| 9. Sr. English Pleasure* | done if we have participants |

10. Sr+ English Pleasure*

11. PW English Equitation*

12. Jr. English Equitation*

(CLASSES CLOSE 2 CLASSES PRIOR)

13. Int. English Equitation*

14. Sr. English Equitation*

15. Sr+ English Equitation*

16. Walk Trot 10 & under (Western Pleasure)

17. Walt Trot 11 & over (Western Pleasure)

18. Lead Line 6 yrs. & under

19. PW Western Pleasure*

20. Jr Western Pleasure*

21. Int. Western Pleasure*

22. Sr. Western Pleasure*

23. Sr+ Western Pleasure*

24. Non-Stock Type Western Pleasure*

25. 2 & 3 yr. old Western Pleasure*

26. PW Western Horsemanship*

27. Jr. Western Horsemanship*

28. Int Western Horsemanship*

29. Sr Western Horsemanship*

30. Sr+ Western Horsemanship*

31. Open Costume Class

WSCA OPEN GAME SHOW

GAMES ONLY

1. Egg/Spoon 17 yrs. & under
2. Egg/spoon 18 yrs & over
3. PW Pole Weaving*
4. Jr Pole Weaving*
5. Int. Pole Weaving*
6. Sr. Pole Weaving*
7. Sr+ Pole Weaving*
8. Side Pot Poles (times from 3-7)
9. PW. Key Race*
10. Jr Key Race*
11. Int. Key Race*
12. Sr. Key Race*
13. Sr+ Key Race*
14. PW. Barrels*
15. Jr. Barrels*
16. Int. Barrels*
17. Sr. Barrels*
18. Sr+ Barrels*
19. Side Pot Barrels (time from 14-18)
20. PW Jumping Figure 8*
21. Jr. Jumping Figure 8*
22. Int. Jumping Figure 8*
23. Sr. Jumping Figure 8*
24. Sr+ Jumping Figure 8*
25. PW Speed Dash*
26. Jr Speed Dash*
27. Int. Speed Dash*
28. Sr. Speed Dash*
29. Sr+ Speed Dash*
30. Open Ribbon Race
31. Rescue Race

For questions contact: Tammy Blazek or Jennifer Peterson

tkblazek@msn.com

samuelboone595@gmail.com

218-820-8763

218-820-7655

LIVESTOCK ENTRY FORM (ONLY)

2021 Crow Wing County Fair - August 3-7

All livestock entry forms must be in the fair office by

Wednesday July 30, 2021

Crow Wing County Fair

PO Box 169 - Brainerd, MN 56401

All Dairy Cattle, Beef Cattle, Sheep, Goats and Swine – must have permanent animal identification #'s – ex - MN 4-H ear tag, Tattoo, Ear Tag, Scrapie Tag,

Name _____

Phone _____

Address _____

Email

Dept	Class	Lot	Book Description	Entry Fee	Animal ID#	Scrapie #
------	-------	-----	------------------	-----------	------------	-----------

Total _____

Total number of animals bringing into fairgrounds –

___ Dairy Cattle ___ Beef Cattle ___ Goats ___ Swine

___Sheep ___Poultry ___Swine ___Llama

PREMIUM LIST 2021

DEPARTMENT 40

BAKING

REGISTRATION PAPERWORK

By July 30th

ENTRY DAY Monday, Aug 2

ONLY 11:00 AM - 5:00 PM

1. Read general rules in front of this book.
2. No person may enter more than one article in the same lot.
3. All articles must be the work of the exhibitors.
4. Judges are instructed to award premiums based on merit of items.
5. **No entry** in this department will be accepted after **7:00 P.M. Monday, Aug. 2**
6. All bread and cakes should be out of tins. (NOTE: NEW SIZES)
7. All baked articles must be in **ZIPLOCK BAGS**.
8. **NO COMMERCIAL MIXES ACCEPTED**
9. Entries **MUST BE** on plain white paper plates.
10. "Any other not mentioned" lots are intended only for such articles not listed in other lots.

DEPARTMENT 40, CLASSES 1-3 BAKING

Score Card - Bread Baking

External Appearance:	
Color	5
Size	5
Shape.....	5 15
Internal Appearance:	
Crust:	
Depth	5
Texture	5 10
Crumb:	
Color	5
Grain	10
Lightness	5
Moisture.....	5
Thoroughness of baking.....	10 35
Flavor:	
Odor	20
Taste.....	20 <u>40</u>
	100

DEPARTMENT 40, CLASSES 1-14 BAKING

Prizes

1st Prize	\$4.00
2nd Prize.....	\$3.00
3rd Prize	\$2.00

A "sweepstakes ribbon" will be awarded for Department 40. A champion & reserve champion ribbon will be awarded in each class in Department 40.

DEPARTMENT 40, CLASS 1 PLAIN DOUGH (breads, 1/2 loaf or small loaf pan)

"Super One" Gift Certificate
Best of Show - Classes 1 & 2.

Lot

1. Bread, White
2. Bread, Whole Wheat
3. Bread, Rye
4. Bread, Graham
5. Batter Bread
6. Hamburger Buns, 3
7. Oatmeal Bread
8. Nationality Bread
9. Sourdough
10. Machine Bread - White
11. Machine Bread - Dark
12. Any other machine bread not mentioned

DEPARTMENT 40, CLASS 2 YEAST BREAD AND ROLLS, SWEET DOUGH (breads, 1/2 loaf or small loaf pan)

Lot

1. Fancy Breads
2. Dinner Rolls (Finger, Clover Leaf, plain, etc.), 3
3. Dark Dinner Rolls, 3
4. Coffee Cake Rolls
5. Cinnamon Rolls, unfrosted, 3
6. Caramel Rolls, 3
7. Nationality Bread
8. Any other not mentioned

DEPARTMENT 40, CLASS 3 QUICK BREADS (breads, 1/2 loaf or small loaf pan)

Made with baking powder or soda and without yeast.

"Cub Foods" of Baxter Gift Certificate
Best of Show - Classes 3-6.

Lot

1. Cereal Muffins, 3
2. Fruit Muffins, 3
3. Baking Powder Biscuits
4. Nut Bread
5. Corn Bread
6. Date Bread
7. Banana Bread
8. Ginger Bread
9. Pumpkin Bread
10. Zucchini Bread
11. Carrot Bread
12. Cranberry Bread
13. Lemon Bread
14. Rhubarb Bread
15. Coffee Cake
16. Any other not mentioned.

DEPARTMENT 40, CLASS 4 CAKE BAKING

WILTON SPONSOR

Wilton Enterprises supports the Wilton "Best of Class" winners from the decorated cake /divisions and cupcake divisions.



Score Card for Cake Baking

General appearance	10
General shape, volume.....	10
Crust, texture, depth	10
Color of crust	5
Lightness and tenderness.....	15
Texture, fineness and evenness ..	20
Flavor and moisture.....	30
	100

Half cake made from scratch required.
No frosting permitted, unless stated.

Lot

1. Angel Food
2. Applesauce
3. Chiffon
4. Cupcake, Light or Dark, 3
5. Decorated Cupcakes, Light or Dark, 3
6. Cake Pops, 3
7. Bundt
8. Chocolate
9. Gold or Yellow
10. Jelly Roll
11. Carrot
12. Pound
13. Spice
14. White
15. Sponge
16. Fruit Cake
17. Rhubarb Cake
18. Decorated Cake, frosting permitted (whole cake)
19. Poppyseed Cakes
20. Any other not mentioned

DEPARTMENT 40, CLASS 5
COOKIES, DOUGHNUTS & BARS
3 Pieces in Each Entry
(Small white paper plate & ziplock bag)

Score Card

Appearance	10
Baking and crust.....	10
Flavor and moisture.....	35
Shape, regularity, thickness	20
Texture, lightness, tenderness	25
	<u>100</u>



KNOTTY PINE
BAKERY

Lot

1. Sugar cookies, plain
2. Sugar cookies, decorated
3. Light, rolled and cut
4. Dark, rolled and cut
5. Light, dropped or pressed
6. Dark, dropped or pressed
7. Ice Box
8. Filled
9. Sandwich
10. Chocolate Chip Cookies
11. Oatmeal Cookies
12. Ginger Snaps
13. Peanut Butter Cookies
14. Biscotti
15. No Bake Cookies
16. Nationality Cookies
17. Holiday Cookies
18. Any other cookie not mentioned
19. Doughnuts, Plain
20. Doughnuts, Raised
21. Any other doughnut not mentioned
22. No Bake Bars
23. Fruit Bars
24. Shortbread Bars
25. Pumpkin, Carrot or Zucchini Bars
26. Brownies
27. Any other bars

DEPARTMENT 40 - CLASS 6
SPECIALTY DIET

Lot

1. Sugar Free Cake
2. Sugar Free Cookies
3. Sugar Free Bars
4. Sugar Free - any other
5. Gluten Free Cake
6. Gluten Free Cookies
7. Gluten Free Bars
8. Gluten Free Breads
9. Gluten Free - any other not mentioned

DEPARTMENT 40 - CLASS 7
PIES
(Whole Pie)
(Prefer foil pan with clear cover)

Lot

1. Apple
2. Mince
3. Rhubarb

4. Berry
5. Lemon
6. Cherry
7. Pecan
8. Raisin
9. Crust only
10. Any other not mentioned except Custard, Pumpkin and Cream Pies

DEPARTMENT 40, CLASS 8
CREAM PIES

(Whole Pie)
(Prefer foil pan with clear cover)

Lot

1. Banana Cream
2. Butterscotch
3. Chiffon Pies
4. Chocolate
5. Coconut Cream
6. Custard
7. Pumpkin
8. Sour Cream
9. Any other cream pie not mentioned

DEPARTMENT 40, CLASS 9
CANDY

3 Pieces in Each Entry
(Small white paper plate & ziplock bag)

Fancy Pants Chocolates

Best of Show \$50 Gift Card

Lot

1. Fudge
2. Divinity
3. Penuche
4. Fondant
5. Caramels
6. Peanut Brittle
7. Mints
8. Any other not mentioned

DEPARTMENT 40, CLASS 10
DEHYDRATED FOODS

Foods must be individually packaged with label indicating method of preparation.

Lot

1. Vegetables, 1 cup
2. Fruits, 1 cup
3. Fruit Leather, 1
4. Herbs, 1/4 cup
5. Jerky
6. Any other

DEPARTMENT 40, CLASS 11
EGGS

Lot

1. Brown Shelled Eggs, 1/2 dozen
2. White Shelled Eggs, 1/2 dozen
3. Any other - 1/2 dozen

Special Awards Classes 12-14

DEPARTMENT 40, CLASS 12
YOUTH BAKING - GRADES K-6

Lot

1. Yeast Bread, 1/2 loaf
2. Quick Bread, 1/2 loaf or 3 muffins
3. Dinner Rolls, 3
4. Pie, Whole Pie
5. Cake, Dark, half, not frosted
6. Cake, Light, half, not frosted
7. Bars, 3
8. Chocolate Chip Cookies, 3
9. Oatmeal Cookies, 3
10. Ginger Snaps, 3
11. Peanut Butter Cookies, 3
12. Sugar Cookies, 3
13. Any other cookie not mentioned, 3
14. Candy, 3 pieces
15. Cupcakes, Light or Dark, 3
16. Cake Pops, 3

DEPARTMENT 40, CLASS 13
YOUTH BAKING - GRADES 7-9
 Lots the same as Class 12

DEPARTMENT 40, CLASS 14
YOUTH BAKING - GRADES 10-12
 Lots the same as Class 12

DEPARTMENT 40, CLASS 15
SENIOR CITIZEN BAKING
 Lots the same as Class 12

DEPARTMENT 40, CLASS 16
NURSING HOME AND HANDICAPPED BAKING
 Lots the same as Class 12

DEPARTMENT 40, CLASS 17
YOUTH BAKING - GRADES K-6

Lot

1. Decorated Cake
2. Decorated Cupcakes, Light or Dark, 3

DEPARTMENT 40, CLASS 18
YOUTH BAKING - GRADES 7-9
 Lots the same as Class 12

DEPARTMENT 40, CLASS 19
YOUTH BAKING - GRADES 10-12
 Lots the same as Class 12

DEPARTMENT 40, CLASS 20
SENIOR CITIZEN BAKING
 Lots the same as Class 12

DEPARTMENT 40, CLASS 21
NURSING HOME AND HANDICAPPED BAKING
 Lots the same as Class 12

DEPARTMENT 41**CANNING****REGISTRATION PAPERWORK**

By July 30th

ENTRY DAY Monday Aug 2nd
ONLY 11:00 AM - 5:00 PM**CLASSES 1-11****Prizes**

1st Prize\$4.00
 2nd Prize.....\$3.00
 3rd Prize.....\$2.00

DEPARTMENT 41, CLASSES 1-11
CANNING

1. All recipes, procedures, and processing times **MUST** follow current USDA and/or University of Minnesota home food preservation publications (available in the County Extension Office or www.uga.edu/nchfp).
2. Jars should be heat-tempered glass canning jars.
3. All jars should be sealed. Leave screw bands on 2-piece jar lids. Jellies and jams should be covered with lids.
4. Fish must be canned in pint jars.
5. Labels should be attached to each jar (or for herbs, in jars or self-sealing plastic bags). Labels must include name of product, processing method used and time processed.

DEPARTMENT 41, CLASS 1
CANNED VEGETABLES*"Cub Foods" of Baxter Gift Certificate*
Best of Show - Classes 1-11

Lot

1. Asparagus
2. Beans, Green
3. Beans, Yellow
4. Beans, Lima
5. Beans, Baked
6. Beans, Kidney or Pinto
7. Beets, whole or cut
8. Carrots
9. Corn
10. Peas
11. Pumpkin
12. Sauerkraut
13. Tomatoes, cut
14. Tomatoes, whole
15. Tomatoes, juice
16. Mixed Vegetables
17. Greens, Spinach, Chard, Beet, etc.
18. Display of canned vegetables consisting of 6 varieties

DEPARTMENT 41, CLASS 2
CANNED MEATS

Lot

1. Fowl
2. Beef
3. Pork
4. Sausage
5. Fish
6. Any other not mentioned
7. Display of canned meats consisting of 4 varieties

DEPARTMENT 41, CLASS 3
MINCEMEAT

Lot

1. Mincemeat
2. Mock Mincemeat

DEPARTMENT 41, CLASS 4
CANNED FRUIT

May be processed by boiling water bath.

Lot

1. Blueberries
2. Blackberries
3. Cranberries
4. Compass Cherries
5. Bing Cherries
6. Crab Apples
7. Currants, Red
8. Gooseberries
9. Ground Cherries
10. Plums, Tame
11. Raspberries, Black
12. Raspberries, Red
13. Rhubarb
14. Strawberries, Tame
15. Strawberries, Wild
16. Apricots
17. Peaches
18. Pears
19. Apples
20. Grapes
21. Applesauce
22. Rhubarb Sauce
23. Juices
24. Any other not mentioned
25. Display of canned fruit consisting of 6 varieties

DEPARTMENT 41, CLASS 5
PRESERVED FRUITS

Preserves are fruit which is whole if small fruits or in sections if large fruit. Tender, transparent, and plump in thick syrup of jelly-like consistency, but not as thick as jelly.

Lot

1. Apricot
2. Peach
3. Plum
4. Strawberry
5. Raspberry
6. Tomato
7. Any other not mentioned
8. Display of 4 varieties of preserved fruit

DEPARTMENT 41, CLASS 6
JELLIES

Lot

1. Apple
2. Currant
3. Grape
4. Chokecherry
5. Plum
6. Strawberry
7. Raspberry
8. Mint
9. Blackberry
10. Any other not mentioned
11. Display of 4 varieties

DEPARTMENT 41, CLASS 7
JAM

Lot

1. Raspberry
2. Apricot
3. Grape
4. Peach
5. Plum
6. Strawberry
7. Apple
8. Blueberry
9. Zucchini
10. Any other not mentioned
11. Display of jams, 4 varieties

DEPARTMENT 41, CLASS 8
BUTTER

Butter consists of fruit pulp with sugar added. Spices may be added. Consistency suitable for spreading.

Lot

1. Apple
2. Plum
3. Peach
4. Any other not mentioned

DEPARTMENT 41, CLASS 9
PICKLES

Lot

1. Pickles, Mixed
2. Cucumber, Sour, cut
3. Cucumber, Sour, whole
4. Cucumber, Sweet, cut
5. Cucumber, Sweet whole
6. Beet
7. Dill
8. Crab Apple
9. Watermelon
10. Bread and Butter
11. Onion
12. Tomato, Green, Sweet
13. Bean
14. Carrot
15. Zucchini
16. Any other not mentioned
17. Display of 4 varieties

DEPARTMENT 41, CLASS 10
RELISHES & SAUCES

Lot

1. Uncooked
2. Bar-B-Que Sauce
3. Catsup
4. Chili Sauce
5. Corn Relish
6. Beet Relish
7. Piccalilli
8. Salsa
9. Cucumber
10. Spaghetti Sauce
11. Picante Sauce
12. Any other not mentioned

DEPARTMENT 41, CLASS 11
HONEY AND MAPLE SYRUP

Score Card

Color	30
Container	10
Flavor	30
Density	30
	100

Lot

1. Honey, Comb, 5 sections. Minimum weight - 12 oz. per section.
2. Honey, Extracted, 3 pints or 1 pound jar.
3. Honey, Chunk - White Comb and extracted honey 1/2 or more comb honey by weight in 3 pound glass containers.
4. One Deep Frame of Honey. (No brood frame may be entered.)
5. One Shallow Frame of Honey, 4 3/4", 5 3/8, or 6 1/4" size. (No brood frame may be entered.)
6. Honey Cookies, 3 items, dropped, containing honey, recipe included in exhibit.
7. Maple Syrup, 1 pint
8. Maple Syrup Cookies, recipe included, 3 items
9. Maple Sugar Candy, 3 pieces
10. Maple Sugar Cake, recipe included.
11. Any other not mentioned

DEPARTMENT 42

DEPARTMENT 42, CLASS 12
**SENIOR CITIZENS CANNING
SENIOR CITIZENS -
AGE 65 AND OVER**

REGISTRATION PAPERWORK

By July 30th

**ENTRY DAY Monday, August 2nd
ONLY 11:00 AM - 5:00 PM**

Prizes - 1-12

1st Prize	\$4.00
2nd Prize.....	\$3.00
3rd Prize.....	\$2.00

A champion & reserve champion will be awarded in each class in Department 41.

DEPARTMENT 43

DEPARTMENT 43, CLASS 1
HOME BREW

Entrants must be 21 years of age or older. Amateurs only. No professional or commercial brewers allowed. Exhibits must be labeled to include type, maker name, address and vintage year. Labels will be covered by superintendent during judging.

Lot

1. American Ale
2. Brown Ale
3. India Pale Ale (IPA)
4. Any other not mentioned
5. Wine

DEPARTMENT 50

HOMEMAKING CRAFTS

REGISTRATION PAPERWORK

BY July 30th

**ENTRY DAY Monday, August 2nd
ONLY 11:00 AM - 5:00 PM**

All articles must be hand made by the exhibitor and not previously exhibited. An exhibitor may make only one entry in any lot, but may make entries in as many lots as he or she wishes.

Read **HOW TO ENTER EXHIBITS** in front of book.

Score Card

1. Suitability of materials.....10
2. Design and color - Appropriateness of design to material and purpose of article15
3. Beauty of design and color combination.....15
4. Workmanship25
5. Difficulty of project.....25
6. New appearance neat and clean10

DEPARTMENT 50, CLASSES 1-15

Prizes

1st Prize	\$4.00
2nd Prize	\$3.00
3rd Prize.....	\$2.00

A sweepstakes ribbon will be awarded for Department 50. A champion & reserve champion will be awarded in each class in Department 50.

"Country Fabrics & Collectibles"

Department 50 - Classes 1-10

Lot 5 - Machine Embroidered

\$15.00 Gift Certificate - Judges Choice

DEPARTMENT 50, CLASS 1

PLACE MATS

(At Least 4)

Lot

1. Lace Trim, Knit, Crochet or Tatted
2. Cross Stitched
3. Hand Embroidered
4. Machine Decorated
5. Machine Embroidered
6. Appliqued
7. Cutwork
8. Crocheted, any type
9. Knitted
10. Woven
11. Hardanger
12. Any other

DEPARTMENT 50, CLASS 2

TABLECLOTH

(over 54 in. long)

Lots the same as Class 1

DEPARTMENT 50, CLASS 3
**LUNCH CLOTH, BREAKFAST
CLOTH, BETWEEN-MEAL CLOTH
OR CENTERPIECE**

(At least 32 in. long but not over 54 in.)

Lots the same as Class 1

DEPARTMENT 50, CLASS 4

CENTERPIECE OR DOILY

(At least 14 in. but under 32 in.)

Lots the same as Class 1

DEPARTMENT 50, CLASS 5

DOILY

(Under 14 in.)

Lots the same as Class 1

DEPARTMENT 50, CLASS 6

TABLE RUNNER

Lots the same as Class 1

DEPARTMENT 50, CLASS 7

PILLOW CASES

(Pair)

Lots the same as Class 1

DEPARTMENT 50, CLASS 8

DISH TOWELS

(At least 3)

Lot

1. Appliqued
2. Cross Stitched
3. Hand Embroidered
4. Machine Decorated
5. Machine Embroidered
6. Any other type of work not mentioned

DEPARTMENT 50, CLASS 9

GUEST OR BATH TOWEL

Lot

1. Crocheted, Knitted, Tatted Trim
2. Cross Stitched
3. Hand Embroidered
4. Machine Decorated
5. Machine Embroidered
6. Appliqued
7. Any other type of work not mentioned

DEPARTMENT 50, CLASS 10

**POTHOLDERS OR
HOT DISH MATS**

(Set of 2)

Lot

1. Cross Stitched
2. Hand Embroidered
3. Machine Decorated
4. Appliqued
5. Machine Embroidered
6. Crocheted
7. Knitted
8. Woven
9. Any other not mentioned

**DEPARTMENT 50, CLASS 11
COUNTED CROSS STITCH**

Lot

1. Aida Cloth - framed under 10"
2. Aida Cloth - framed over 10"
3. Wall Hangings (Aida Cloth)
4. Linens - framed under 10"
5. Linens - framed over 10"
6. Wall Hangings (Linens)
7. Beaded
8. Any other article not mentioned

**DEPARTMENT 50, CLASS 12
HOME ECONOMICS FOR
GRADES K-6**

(Work may have been done in school)

Lot

1. Dish Towel
2. Pillow Cases (pair)
3. Table Runner
4. Centerpiece - Lunch Cloth, Table Cloth, etc.
5. Pot Holder or Hot Dish Mat
6. Wall Hanging
7. Stuffed Toy
8. Rugs
9. Spread
10. Pillows
11. Any other article not mentioned

**DEPARTMENT 50, CLASS 13
HOME ECONOMICS FOR
GRADES 7-9**

PRIZES AND LOTS
Same as Class 12

**DEPARTMENT 50, CLASS 14
HOME ECONOMICS FOR
GRADES 10-12**

PRIZES AND LOTS
Same as Class 12

**DEPARTMENT 50, CLASS 15
MISCELLANEOUS FURNISHINGS**

Lot

1. Needlepoint Pillow, Pillow Cover or Stool Covering
2. Sofa Pillow or Pillow Covering
3. Wall Hanging, unframed
4. Wall Hanging, framed
5. Bags - Garment, Shoe, Tote, etc.
6. Hanger Set (3)
7. Lamp Shade
8. Coasters (4)
9. Napkin Holder
10. Cover for toaster, mixer, etc.
11. Any article not mentioned in any class

**DEPARTMENT 50, CLASSES 16-18
Prizes**

- | | |
|-----------------|--------|
| 1st Prize | \$6.00 |
| 2nd Prize | \$5.00 |
| 3rd Prize | \$4.00 |

**DEPARTMENT 50, CLASS 16
SPREADS**

Lot

1. Crocheted
2. Knitted
3. Flounce Type
4. Candlewicking
5. Woven
6. Embroidered
7. Crib Spread or Shawl, Crocheted
8. Crib Spread or Shawl, Knitted
9. Any other type of work

**DEPARTMENT 50, CLASS 17
AFGHANS**

Lot

1. Crocheted
2. Knitted
3. Embroidered on Knit or Crochet
4. Broomstick or Hairpin
5. Any other type of work

**DEPARTMENT 50, CLASS 18
RUGS**

Lot

1. Hooked, Rag, new or old material
2. Latchhook
3. Crocheted, Rag, new or old material
4. Plastic Bag
5. Crocheted, Yarn
6. Braided, Rag, new or old material
7. Woven, Rag, new or old material
8. Woven, other than rag
9. Needlepoint
10. Any other type of work

DEPARTMENT 51

**HOME MAKING CRAFTS
SENIOR CITIZENS -
AGE 65 AND OVER**

**REGISTRATION PAPERWORK
BY July 30th
ENTRY DAY Monday, Aug. 2nd
ONLY 11:00 AM - 5:00 PM**

Prizes - 1-15

- | | |
|-----------------|--------|
| 1st Prize | \$4.00 |
| 2nd Prize | \$3.00 |
| 3rd Prize | \$2.00 |

Prizes - 16-18

- | | |
|-----------------|--------|
| 1st Prize | \$6.00 |
| 2nd Prize | \$5.00 |
| 3rd Prize | \$4.00 |

A champion & reserve champion will be awarded in each class in Department 51.

CLASSES & LOTS
Same as Department 50

DEPARTMENT 52

**HOME MAKING CRAFTS
NURSING HOME AND
HANDICAPPED**

**REGISTRATION PAPERWORK
By July 30th
ENTRY DAY Monday, Aug. 2nd
ONLY 11:00 AM - 5:00 PM**

Prizes - 1-15

- | | |
|-----------------|--------|
| 1st Prize | \$4.00 |
| 2nd Prize | \$3.00 |
| 3rd Prize | \$2.00 |

Prizes - 16-18

- | | |
|-----------------|--------|
| 1st Prize | \$6.00 |
| 2nd Prize | \$5.00 |
| 3rd Prize | \$4.00 |

A champion & reserve champion will be awarded in each class in Department 51.

CLASSES & LOTS
Same as Department 50

DEPARTMENT 60

GARMENT MAKING

**REGISTRATION PAPERWORK
By July 30th
ENTRY DAY Monday, Aug. 2nd
ONLY 11:00 AM - 5:00 PM**

Previously exhibited articles
not eligible.

Score Card

- | | |
|--|-----|
| 1. Design (original vs. commercial) .. | 20 |
| 2. Materials and embellishments .. | 15 |
| 3. Workmanship | 30 |
| 4. New appearance neat and clean .. | 10 |
| 5. Relation of garment value to cost in time and money | 10 |
| 6. Difficulty of project | 15 |
| | 100 |

**DEPARTMENT 60, CLASSES 1-16
Prizes**

- | | |
|-----------------|--------|
| 1st Prize | \$4.00 |
| 2nd Prize | \$3.00 |
| 3rd Prize | \$2.00 |

A sweepstakes ribbon will be awarded for Department 60. A champion & reserve champion will be awarded in each class in Department 60.

**DEPARTMENT 60, CLASS 1
WOMEN'S GARMENTS &
ACCESSORIES**

Fabric

Lot

1. Coat, any material
2. Jacket, lined
3. Suit
4. Dress, wool or wool with other fibers
5. Dress, medium heavy to heavy materials such as flannel, corduroy, etc., no wool
6. Dress, light weight materials, cotton, linen or synthetics, no wool
7. Dress, sheer materials comparable to silk, voiles, dimity
8. Vest
9. Jacket, unlined
10. Formal
11. Jumper
12. Skirt, wool or wool with other fibers
13. Skirt, any other material
14. Blouse
15. Pant Suit
16. Warm-up Suit
17. Slip
18. Knit Shirt
19. Nightgown or Pajamas
20. Swim Suits
21. Apron, practical
22. Apron, fancy
23. Slacks
24. Slippers, cloth
25. Cap or Hat
26. Tote Bag
27. Purse
28. Any other garment not mentioned

**DEPARTMENT 60, CLASS 2
MEN'S WEAR**

Lot

1. Shirt
2. Jacket
3. Knit Shirt
4. Any other men's garment not listed
5. Sport Coat or Suit
6. Trousers

**DEPARTMENT 60, CLASS 3
POLAR FLEECE - CHILDREN'S
ITEMS**

Lot

1. Jackets or Coats
2. Hats or Caps
3. Mittens
4. Vests
5. Slippers
6. Scarf
7. Any other not mentioned

**DEPARTMENT 60, CLASS 4
POLAR FLEECE - ADULT ITEMS**

Lots the same as Class 3

**DEPARTMENT 60, CLASS 5
INFANTS & CHILDREN'S
GARMENTS**

Fabric

Lot

1. Child's Coat
2. Boy's Suit
3. Dress, wool, or wool with other fibers, for street wear
4. Dress, cotton or linen, or cotton with other fibers (except wool) for street wear
5. Dress, silk or any synthetic such as rayon, nylon, orlon, or synthetic blends (no cotton or wool) for street wear
6. Infant's Dress, cloth
7. Boy's Trousers or Slacks
8. Girl's Slacks
9. Boy's or Girl's Jacket
10. Boy's or Girl's Shirt
11. Skirt
12. Blouse
13. Pajamas or Nightgown
14. Knit Shirt
15. Jumper
16. 3-Piece Ensemble
17. Halloween Costume
18. Any other garment not mentioned

**DEPARTMENT 60, CLASS 6
REMODELED GARMENTS
Score Card**

- | | |
|---|-----------|
| 1. General success of project | 25 |
| 2. Design and color | 25 |
| 3. Workmanship | 30 |
| 4. Suitability of results to purpose intended | <u>20</u> |
| | 100 |

Lot

1. Coat
2. Suit
3. Snowsuit
4. Blouse or Shirt
5. Skirt
6. Dress
7. Trousers or Slacks
8. Patching (by hand)
9. Patching (by machine)
10. Sweatshirt
11. Any other garment not mentioned

**DEPARTMENT 60, CLASS 7
INFANTS & CHILDREN'S
GARMENTS**

Crocheted or Hand Knitted

Lot

1. Crocheted Ensemble (3 pieces)
2. Knitted Ensemble (3 pieces)
3. Crocheted Dress
4. Knitted Dress
5. Crocheted Child's Cap (not Bonnets)
6. Knitted Child's Cap (not Bonnets)
7. Crocheted Scarf
8. Knitted Scarf
9. Crocheted Jacket
10. Knitted Jacket
11. Crocheted Sweater
12. Knitted Sweater
13. Crocheted Slippers
14. Knitted Slippers
15. Crocheted Booties
16. Knitted Booties
17. Crocheted Bonnet
18. Knitted Bonnet
19. Crocheted Mittens
20. Knitted Mittens
21. Crocheted Bib
22. Knitted Bib
23. Crocheted Poncho
24. Knitted Poncho
25. Crocheted Headband
26. Knitted Headband
27. Any other not mentioned, Crocheted
28. Any other not mentioned, Knitted

**DEPARTMENT 60, CLASS 8
ADULT GARMENTS &
ACCESSORIES**

Crocheted or Hand Knitted

Lot

1. Knitted Coat
2. Crocheted Coat
3. Knitted Sweater or Shrug, Women's
4. Crocheted Sweater or Shrug, Women's
5. Knitted Sweater, Men's
6. Crocheted Sweater, Men's
7. Knitted Dress
8. Crocheted Dress
9. Knitted Vest
10. Crocheted Vest
11. Crocheted Ponchos
12. Knitted Ponchos
13. Crocheted Cap or Hat
14. Knitted Cap or Hat
15. Knitted Slippers
16. Crocheted Slippers
17. Knit Scarf, Shawl or Stole
18. Crochet Scarf, Shawl or Stole
19. Knit Mittens
20. Crochet Mittens
21. Knit Gloves
22. Crochet Gloves
23. Knit Stockings
24. Crocheted Stockings
25. Knit Purse
26. Crocheted Purse
27. Knit Headband
28. Crocheted Headband
29. Any other not mentioned

DEPARTMENT 60, CLASS 9
ACCESSORIES
Crocheted or Hand Knitted

Lot

1. Crocheted Purse
2. Knitted Purse
3. Crocheted Belt
4. Knitted Belt
5. Crocheted Necktie
6. Knitted Necktie
7. Crocheted any other accessories
8. Knitted any other accessories

DEPARTMENT 60, CLASS 10
MACHINE KNITTING
Garment over Size 12

Lot

1. Vest or Shell
2. Sweater, lace
3. Sweater, cardigan, not lace
4. Sweater, pullover, not lace
5. Any other garment

DEPARTMENT 60, CLASS 11
MACHINE KNITTING
Garment Size 12 and Under

Lot

1. Sweater, Cardigan
2. Sweater, Pullover
3. Sweater and Pant Set
4. Infant Ensemble, Sweater, Cap and Booties
5. Dress
6. Any other garment

DEPARTMENT 60, CLASS 12
MACHINE KNITTING
Miscellaneous

Lot

1. Mittens
2. Scarf
3. Slippers
4. Cap
5. Socks
6. Toys
7. Christmas Decorations
8. Placemat or Pillow Top, created on a knitting machine
9. Afghan, 36" by 40" or smaller
10. Afghan, larger than 36" by 40"
11. Any other article (not a garment)

DEPARTMENT 60, CLASS 13
**TOYS, BEARS, DOLLS
 AND DOLL CLOTHES**

Lot

1. Doll Clothes, Sewn, 3 pieces
2. Doll Clothes, Knit or Crochet, 3 pieces
3. Doll dressed to represent a general character or certain individual
4. Bear dressed to represent a general character or certain individual
5. Dolls dressed to represent general characters or certain individuals, pair or group
6. Bear dressed to represent general characters or certain individuals, pair or group
7. Doll, dressed as a bride
8. Bear, dressed as a bride

9. Doll, play type, 8 inches and under, dressed in sewn clothes
10. Bear, play type, 8 inches and under, dressed in sewn clothes
11. Doll, play type, over 8 inches, dressed in sewn clothes
12. Bear, play type over 8 inches, dressed in sewn clothes
13. Doll, play type, 8 inches and under, dressed in knit or crocheted clothes
14. Bear, play type, 8 inches and under, dressed in knit or crocheted clothes
15. Doll, play type, over 8 inches, dressed in knit or crocheted clothes
16. Bear, play type, over 8 inches, dressed in knit or crocheted clothes
17. Stuffed doll made by exhibitor
18. Stuffed bear made by exhibitor
19. Stuffed doll made and dressed by exhibitor
20. Stuffed bear made & dressed by exhibitor
21. Doll made of odd or novelty materials, made and dressed by exhibitor
22. Bear made of odd or novelty materials, made & dressed by exhibitor
23. Doll for decorative use
24. Bear for decorative use
25. Puppet, string, single, pair or group
26. Puppet, hand, single, pair or group
27. Stuffed toy, yarn
28. Stuffed toy, other than yarn
29. Stuffed toys, pair or group
30. Doll, any other not mentioned
31. Bear, any other not mentioned
32. Dolls, any other not mentioned, pair or group
33. Bears, any other not mentioned, pair or group

DEPARTMENT 60, CLASS 14
Youth Grades K-6
(May have been done in school)

Lot

1. Dress
2. Pajamas
3. Sport Clothes, such as Slacks, Shorts, etc.
4. Pant Suit
5. Swim Suit
6. Any other sewn garment not mentioned
7. Knitted Sweater, Shrug or Stole
8. Apron
9. Skirt
10. Blouse
11. Any other knitted article
12. Any other crocheted article

DEPARTMENT 60, CLASS 15
Youth Grades 7-9
(May have been done in school)
 Lots the same as Class 14

DEPARTMENT 60, CLASS 16
Youth Grades 10-12
(May have been done in school)
 Lots the same as Class 14

DEPARTMENT 61

**GARMENT MAKING
 SENIOR CITIZENS
 AGE 65 AND OVER**

REGISTRATION PAPERWORK
 By July 30th
ENTRY DAY Monday, Aug. 2nd
ONLY 11:00 AM - 7:00 PM

Prizes - Classes 1-13

1st Prize	\$4.00
2nd Prize.....	\$3.00
3rd Prize.....	\$2.00

A champion & reserve champion will be awarded in each class in Department 61.

CLASSES & LOTS
 Same as Department 60

DEPARTMENT 62

**GARMENT MAKING
 NURSING HOME AND
 HANDICAPPED**

REGISTRATION PAPERWORK
 By July 30th
ENTRY DAY Sunday, Aug. 2nd
ONLY 11:00 AM - 5:00 PM

Prizes - Classes 1-13

1st Prize	\$4.00
2nd Prize.....	\$3.00
3rd Prize.....	\$2.00

A champion & reserve champion will be awarded in each class in Department 62.

CLASSES & LOTS
 Same as Departments 60

DEPARTMENT 70

QUILTS

REGISTRATION PAPERWORK

By July 30th

ENTRY DAY Monday, Aug. 2nd
ONLY 11:00 AM - 5:00 PM

Previously exhibited quilts not eligible.
Exhibitors may make only one entry per lot, but may enter as many lots as they choose.

DEPARTMENT 70, LOTS 1-22

Prizes

1st Prize	\$8.00
2nd Prize.....	\$6.00
3rd Prize.....	\$4.00

A sweepstakes ribbon will be awarded for Department 70. A champion & reserve champion will be awarded in each class in Department 70.

CLASS 1 - Amateur Quilter

CLASS 2 - Amateur Quilter, Professional Machine or Hand Quilted

Please include name of
professional quilter for
exhibit acknowledgement

CLASS 3 - Professional Quilter

"Anyone owning a store/sell their quilts"

CLASS 4 - Senior Citizen Quilter (Over 65)

CLASS 5 - Youth Quilter (Under 18)

*"The Pinetree Patchworkers Quilt Club"
will award a Hobbs Heirloom Batt for
Sweepstakes Winner of Department 70.*

DEPARTMENT 70, LOTS 1-13 BED QUILTS

Lots 1-13 (to have perimeter over 280")

1. Appliqued (hand quilted)
2. Appliqued (machine quilted)
3. Pieced (hand quilted)
4. Pieced (machine quilted)
5. Hand Embroidery or Cross Stitch (includes whole cloth) (hand quilted)
6. Hand Embroidery or Cross Stitch (machine quilted)
7. Machine Embroidery (includes whole cloth) (hand quilted)
8. Machine Embroidery (machine quilted)
9. Original design or technique
10. Commemorative, Friendship, or Group quilt
11. Tied Quilt
12. Any other hand quilted
13. Any other machine quilted

DEPARTMENT 70, LOTS 14 -26 LAP/CRIB QUILTS

Lots 13-22 (to have perimeter under 280")

14. Appliqued (hand quilted)
15. Appliqued (machine quilted)
16. Pieced (hand quilted)
17. Pieced (machine quilted)
18. Hand Embroidery or Cross Stitch (includes whole cloth) (hand quilted)
19. Hand Embroidery or Cross Stitch (machine quilted)
20. Machine Embroidery (includes whole cloth) (hand quilted)
21. Machine Embroidery (machine quilted)
22. Original design or technique
23. Commemorative, Friendship, or Group quilt
24. Tied Quilt
25. Any other hand quilted
26. Any other machine quilted

Prizes - Lots 23-36

1st Prize	\$4.00
2nd Prize.....	\$3.00
3rd Prize.....	\$2.00

DEPARTMENT 70, LOTS 27 - 37 ART/TABLE/WALL HANGING

27. Art Quilt – original design
28. Quilted Garment
29. Quilted Bag or Purse
30. Pillow Top (hand quilted)
31. Pillow Top (machine quilted)
32. Wall Hanging (hand quilted)
33. Wall Hanging (machine quilted)
34. Table Runner (hand quilted)
35. Table Runner (machine quilted)
36. Any other hand quilted
37. Any other machine quilted

DEPARTMENT 80

The Crossing Arts Alliance supports
the "Best of Show" winner from
Department



\$50 Gift Card to The Crossing Arts
Alliance

FINE ARTS, CRAFTS, AND HOBBIES REGISTRATION PAPERWORK

by July 30th

Entry Day Monday, Aug. 2nd
Only 11:00 am – 5:00 pm

Previously exhibited articles not eligible.
All work must be properly prepared for
display. Hanging work must be ready to
hang (wired back preferred), NO Tape.
Not responsible for frames or glass.

Only work done in the past two years
will be accepted. Entries must be the
work of the exhibitor. Entries which do
not comply will NOT BE ACCEPTED.

Sagatun Lodge will award three \$50.00
Premiums for Fine Art entries of
Scandinavian crafts. One each in Fiber
Arts, Woodworking, and Rosemaling.
Fine arts entries must be a Scandinavian
craft or theme.

**No exhibits grades K-9 in Department
80-84. All such exhibits are to be placed
in Dept. 120.**

1st Place	\$4.00
2nd Place	\$3.00
3rd Place	\$2.00

A sweepstakes ribbon will be awarded
for Department 80. A Champion &
Reserve Champion will be awarded in
each class in Department 80.

DEPARTMENT 80, CLASS 1 SCULPTURE OR CARVING

Lot 1-9

1. Wood carving – handcarved
treeware
2. Wood carving – figural, animals
3. Wood carving – lathe work
4. Intarsia
5. Metal sculpture - traditional
6. Metal sculpture – reclaimed/
upcycled
7. Stone
8. Relief
9. Any other not mentioned

DEPARTMENT 80, CLASS 2 FIBER ART

Lot 10-19

10. Weaving
11. Macrame
12. String Art
13. Needle Felting – 2-dimensional
14. Needle Felting – 3-dimensional
15. Rug Hooking
16. Punch Needle
17. Embroidery
18. Basketry
19. Any other not mentioned

DEPARTMENT 80
ORIGINAL ART – CLASSES 3 – 8
Art should be of the artist's own
design. Works produced in a workshop
or guided painting party should enter
in Classes 9 - 14

DEPARTMENT 80, CLASS 3 LANDSCAPE/SEASCAPE

Lot 20-30

20. Oil paint
21. Acrylic
22. Watercolor
23. Tempera
24. Dry Media – Pencil
25. Dry Media – Crayon, chalk,
charcoal, or pastel

26. Pen and Ink
27. Marker
28. Mixed Media/Collage
29. Computer Art
30. Any other not mentioned

DEPARTMENT 80, CLASS 4
BOTANICAL – florals, animals
Lots the same as Class 3

DEPARTMENT 80, CLASS 5
STILL LIFE
Lots the same as Class 3

DEPARTMENT 80, CLASS 6
ABSTRACT
Lots the same as Class 3

DEPARTMENT 80, CLASS 7
CARTOON, ANIME
Lots the same as Class 3

DEPARTMENT 80, CLASS 8
OTHER THAN NAMED
Lots the same as Class 3

The Traveling Art Pub will award a prize
for the Best of Show from Guided Art
(classes 9-14)



DEPARTMENT 80, CLASSES 9 - 14
**GUIDED ART - paintings or art created
at paint parties or workshops**

DEPARTMENT 80, CLASS 9
LANDSCAPE/SEASCAPE
Lots the same as Class 3

DEPARTMENT 80, CLASS 10
BOTANICAL – florals, animals
Lots the same as Class 3

DEPARTMENT 80, CLASS 11
STILL LIFE
Lots the same as Class 3

DEPARTMENT 80, CLASS 12
ABSTRACT
Lots the same as Class 3

DEPARTMENT 80, CLASS 13
CARTOON, ANIME
Lots the same as Class 3

DEPARTMENT 80, CLASS 14
OTHER THAN NAMED
Lots the same as Class 3

DEPARTMENT 80, CLASS 15
POTTERY

- Lot
1. Wheel Thrown
 2. Hand Built – functional
 3. Hand Built – sculptural
 4. Glaze

DEPARTMENT 80, CLASS 16
**PRINTMAKING – prints may be on
fabric or paper**

- Lot
1. Block Printing – woodcut, linoleum,
etc.
 2. Monoprint
 3. Screenprint
 4. Any other not mentioned

DEPARTMENT 80, CLASS 17
FOLK AND DECORATIVE PAINTING

- Lot
1. Rosemaling
 2. Tole Painting
 3. Folk Art Painting
 4. Decorative Painting – functional
item
 5. Decorative Painting – non-
functional object
 6. Any other not mentioned

DEPARTMENT 80, CLASS 18
GLASS

- Lot
1. Stained Glass
 2. Fused Glass
 3. Blown Glass
 4. Lampwork
 5. Glass mosaic
 6. Any other not mentioned

DEPARTMENT 80, CLASS 19
LEATHERWORK

- Lot
1. Bag
 2. Belt
 3. Billfold
 4. Any other not mentioned

DEPARTMENT 80, CLASS 20
PAPER CRAFT

- Lot
1. Papier Mache
 2. Origami
 3. Quilling
 4. Stationery
 5. Wrapping Paper
 6. Any other not mentioned

DEPARTMENT 80, CLASS 21
JEWELRY

- Lot
1. Metalwork – silver, gold, copper
 2. Beaded – commercial beads
 3. Beaded – handmade beads
 4. Recycled/upcycled
 5. Fiber – leather, hemp
 6. Any other not mentioned

DEPARTMENT 80, CLASS 22
GREETING CARDS

- Lot
1. Birthday
 2. Get Well
 3. Holiday
 4. Sympathy
 5. Wedding
 6. Any other not mentioned

DEPARTMENT 80, CLASS 23
SCRAPBOOKING

- Lot
1. 2 page layout, any theme
 2. Album

DEPARTMENT 80, CLASS 24
**NATIVE AMERICAN ART - This
category is for artisans who are
enrolled members of federally or
State recognized tribes of the United
States, or an individual certified as an
Indian artisan by a federally or State
recognized tribe. Participant should list
their tribal affiliation on entry form.**

- Lot
1. Basketry
 2. Beadwork
 3. Leather
 4. Pottery
 5. Quillwork
 6. Any other not mentioned

DEPARTMENT 80, CLASS 25
MISCELLANEOUS HOBBY CRAFT

- Lot
1. Assemblage
 2. Batik or Tie-Dye
 3. Beadwork, any kind
 4. Calligraphy
 5. Candles
 6. Ceramics
 7. Crop Art – seeds, corn husks, wheat,
etc.
 8. Decoupage
 9. Models
 10. Mosaics
 11. Nature Art
 12. Plaster
 13. Polymer Clay
 14. Resin
 15. Recycled Art
 16. Soap - handmade
 17. Taxidermy
 18. Miniatures
 19. Vintage Crafts
 20. Any other not mentioned

**DEPARTMENT 80, CLASS 26
CHRISTMAS CRAFTS**

Lot

1. Tree Skirts
2. Stockings
3. Tree Ornament
4. Wreath
5. Any other not mentioned

**DEPARTMENT 80, CLASS 27
MANUAL ARTS**

Lot

1. Toys and Toy Furniture
2. Bird Houses
3. Clocks
4. Woodburning
5. Furniture – indoor
6. Furniture – outdoor
7. Any other not mentioned

**DEPARTMENT 80, CLASS 28
HANDMADE FISHING TACKLE**

Lot

1. Dry Flies
2. Wet Flies
3. Lures
4. Fish Decoys
5. Rods - handmade
6. Any other not mentioned

**DEPARTMENT 80, CLASS 29
COLLECTIONS**

Lot

1. Stones
2. Coins
3. Insects – identified
4. Stamps
5. Any other not mentioned

DEPARTMENT 80(A)

**CLASSES 1-38
YOUTH HOBBIES,
CRAFTS AND ART
Grades 10-12**

Lots the same as Department 80

DEPARTMENT 81

**HOBBIES, CRAFTS AND ART
SENIOR CITIZENS
AGE 65 AND OVER**

**REGISTRATION PAPERWORK
By July 30th
ENTRY DAY Monday, Aug. 2nd
ONLY 11:00 AM - 5:00 PM**

Prizes - Classes 1-38

1st Prize	\$4.00
2nd Prize.....	\$3.00
3rd Prize.....	\$2.00

A champion & reserve champion will be awarded in each class in Department 81.

CLASSES & LOTS
Same as Department 80

DEPARTMENT 82

**HOBBIES, CRAFTS AND ART
NURSING HOME & HANDICAPPED
REGISTRATION PAPERWORK**

By July 30th

**ENTRY DAY Monday, Aug. 2nd
ONLY 11:00 AM - 5:00 PM**

Prizes - Classes 1-38

1st Prize	\$4.00
2nd Prize.....	\$3.00
3rd Prize.....	\$2.00

A champion & reserve champion will be awarded in each class in Department 82.

CLASSES & LOTS
Same as Department 80

DEPARTMENT 83

PHOTOGRAPHY

**REGISTRATION PAPERWORK
By July 30th**

**ENTRY DAY Monday, Aug. 2nd
ONLY 11:00 AM - 5:00 PM**

**PHOTOGRAPHY ENTRIES AND
DISPLAYS WILL BE IN
THE FORMER BINGO BUILDING
(NORTH OF ADMIN. BLDG.)**

Limit 5 total entries per person.

Size of prints 8x10 inches or 11x14 inches only. Prints must be mounted (foam core, photo board, cardboard). Mounting must be the same size as the print. No frames, mats or glass. No names or watermarks on front of print. Any prints with names/watermarks showing will not be accepted.

Prizes - Class 1-2

1st Prize	\$4.00
2nd Prize.....	\$3.00
3rd Prize	\$2.00

A champion & reserve champion will be awarded in each class in Department 83. All prizes are awarded for each of the lots in Class 1, Class 2, and Class 3.

**DEPARTMENT 83, CLASS 1
PHOTOGRAPHY, BLACK & WHITE**

Lot

1. Scenery
2. People
3. Animals
4. Botanical - Flowers, plants, trees

**DEPARTMENT 83, CLASS 2
PHOTOGRAPHY, COLOR**
Same Lots as Class 1

DEPARTMENT 90

FLOWERS

**REGISTRATION PAPERWORK
(Entries must be pre-registered)**

By July 30th

**ENTRY DAY Monday Aug. 2nd
10:00 A.M. - 6:00 P.M.**

(Pre-Registered)

10:00 A.M. - 4:00 P.M.

(If not Pre-Registered)

A best of show ribbon will be awarded in both the adult and youth categories for Department 90. A champion & reserve champion will be awarded in each class in Department 90 if worthy. A sweepstakes ribbon for the most blue ribbons will be awarded for Department 90. Judging will begin at 6:30 p.m.

1. Preregistration is highly recommended and greatly appreciated. However, if on entry day you have something that is worthy of exhibition, registrations will be accepted **until 4:00 pm**. This is an absolute cut off in order to prepare the paperwork for the judges.
2. All entries must be in by **6:00 p.m. Aug. 2**. Cut flowers, including arrangements, vegetables and grains may be removed at **9:00 p.m.** on Saturday, August 7, 2021.
3. An advertised grower selling plants or flowers may not exhibit in this Department.
4. All blooms staged for the show, except in artistic section, must be cut from plants owned and grown by the exhibitor.
5. After the flowers in the exhibits are arranged, they shall become the property of the Show Committee. Wherever possible, exhibits should be kept in good condition by the exhibitor.
6. Exhibitor is required to exhibit the exact number specified. Correct entries are the responsibility of the exhibitor. Incorrect entries will be disqualified.
7. The decision of the judges in making the awards shall be final. Any interference by exhibitors to influence or dictate the decision of the judges will be sufficient cause for excluding his or her entry from competition.
8. The Show Committee will not be responsible for loss or damage to container or other articles used in the exhibit. Do not bring valuable containers.
9. When exhibiting cut flowers or vegetables the name of the variety should be included on the entry tag. If two exhibits are of equal quality the one with the correct name will be placed over the unnamed exhibit.
10. Flowers used in arrangements

and specimen entries should be "hardened". The flowers should be cut with a knife (not a scissor or pruning shears). The stems should be cut at an angle and placed in warm water in a cool dark place 12 to 24 hours prior to showing. The flowers will be more durable and be in better condition in the show.

11. Flowers exhibited as specimens should be in a plain glass container or bottle, not a decorative vase. It is acceptable to use a small wedge of wood or styrofoam to hold the specimen upright in the container.
12. Points to be considered in judging are listed below.
13. In compliance with the general rules, not more than one exhibit in any one lot will be accepted from any one exhibitor.
14. Wildflowers protected by Minnesota law will not be permitted as cut flowers in exhibits.

Entries coming in late or not placed by 6:00 PM will not be judged.
NO EXCEPTIONS.

Prizes, Classes 1-11

1st Prize	\$4.00
2nd Prize	\$3.00
3rd Prize	\$2.00

DEPARTMENT 90, CLASS 1 DAHLIAS

Color	20
Substance	15
Form	20
Size, according to variety	10
Stem and foliage	20
Depth	5
Bloom position	5
Distinction	5
	100

DAHLIAS ON PARADE

When growing dahlias for show they should be disbudded when the buds are very small. Unless this is done the side buds will be longer than the center bud. The buds should be removed just above the two leaves when they are about an eighth inch in diameter. Then when the dahlia is cut for the show it should be cut below the pair of leaves where the side buds were removed, so the stem will have a pair of leaves. Entries shall consist of one bloom per lot unless otherwise stated any variety.

Lot

1. Dahlia, giant, over 10" diameter
2. Dahlia, large, 8-10" diameter
3. Dahlia, medium, 6-8" diameter
4. Dahlia, small, 4-6" diameter
5. Dahlia, miniature, 4" or less diameter, 3 stems

THE COLORS IN THE SUMMER GARDEN

DEPARTMENT 90, CLASS 2 ANNUALS, CUT FLOWERS

Lot

1. Ageratum, 3 stems
2. Aster, 3 stems
3. Bachelor Buttons, 3 stems
4. Calendula, 3 blooms
5. Calibrachoa, 3 stems
6. Celosia (Crested), 3 stems
7. Celosia (Plumed), 3 stems
8. Cleome, 1 stem
9. Coleus, 1 stem
10. Cosmos, 3 stems
11. Gaura, 3 stems
12. Geranium, 3 blooms
13. Gerbera Daisy, 3 blooms
14. Gomphrena, 3 stems
15. Impatiens, 3 stems
16. Lantana, 1 stem
17. Lisianthus, 3 stems
18. Lobelia, 1 stem
19. Marigolds, dwarf (under 2"), 3 blooms
20. Marigolds, medium (2-3"), 3 blooms
21. Marigolds, large (over 3"), 3 blooms
22. Nasturtiums, 3 blooms
23. Nemesia, 3 stems
24. Nicotiana (flowering tobacco), 3 Stems
25. Ornamental Grasses, 3 stems
26. Pansies, 3 blooms
27. Petunias, single, 1 spray
28. Petunias, double, 1 spray
29. Salvia, one color, 3 stems
30. Scabiosa, 3 stems
31. Scaevola, 3 stems
32. Snapdragons, 3 stems
33. Statice, 3 stems
34. Sunflower, 3 flowers
35. Verbena, 1 stem
36. Zinnia, Pompon, 3 blooms, same color
37. Zinnia, Decorative, 3 blooms, same color
38. Any other annual 3 blooms or stems, 1 variety, spray or branch.
39. Collection of 5 different annuals, 1 stem of each in separate containers.

FLOWERS UNLIMITED

DEPARTMENT 90, CLASS 3 PERENNIALS, BIENNIALS AND BULBS

All exhibits should include a flower unless indicated otherwise

Lot

1. Astilbe, 3 stems
2. Baby's Breath (Gypsophila), 1 stem
3. Bee Balm (Monarda), 3 stems
4. Bell Flower (Campanula), 1 stem
5. Calla Lily, 1 flower and 1 leaf
6. Canna, 1 stem
7. Chrysanthemum, 1 stem
8. Cone Flower (Echinacea), 3 stems
9. Coreopsis, 3 stems
10. Daisy, Shasta, 3 stems

11. Gaillardia, 3 stems
12. Gladioli, miniature, any color, 1 spike
13. Gladioli, any color, 1 spike
14. Hibiscus (Garden Hardy), 1 stem
15. Hollyhock, 1 stem
16. Hydrangea arborescens (Annabelle, snowball and family)
17. Hydrangea paniculata (PeeGee and family)
18. Hydrangea macrophylla (Endless Summer, Mophead, and family)
19. Hydrangea, any flower type, any color other than white or green
20. Hydrangea, 3 stems, your choice, all different varieties (list the varieties) or different colors
21. Joe-Pye Weed, 1 flowering stem
22. Liatris (Gay Feather), 3 stems
23. Lily, Asiatic, 1 stem
24. Lily, Oriental, 1 stem
25. Lily, Tiger, 1 stem
26. Lily, Trumpet, 1 stem
27. Lily, hybrid between types, 1 stem
28. Ornamental Grasses, 3 stems
29. Phlox, 1 stem
30. Phlox collection, 3 different colors, 1 each
31. Rudbeckia, 3 stems
32. Russian Sage (Pervoskia), 1 stem
33. Salvia, 3 stems
34. Sea Holly (Eryngium), 3 stems
35. Sedum, Autumn Joy, 3 stems
36. Sedum, other, 3 stems
37. Statice, 1 stem
38. Veronica, 3 stems
39. Yarrow (Achillea), 3 stems
40. Any other biennial or perennial not listed, 3 stems

DEPARTMENT 90, CLASS 4 DAYLILIES

One stem with multiple buds and 1 open bloom, any variety, preferably named.

Lot

1. Daylilies, extra large flowers, 7" or more in diameter
2. Daylilies, large flowers, 4.5" or more but under 7" in diameter
3. Daylilies, small flowers, 3" or more but under 4.5" in diameter
4. Daylilies, miniature flowers, less than 3" in diameter
5. Daylilies, double, polymeric and multiform flowers
6. Daylilies, spider flowers, spider ratio 4:1 or greater
7. Daylilies, unusual form flowers
8. Daylilies, 3 different colors, 1 stem each

QUEENS OF THE GARDEN

DEPARTMENT 90, CLASS 5 ROSES

Color	25
Form	25
Stem and foliage	20
Size	10
Substance	20
	100

Lot

1. Hybrid Tea, 1 bloom with foliage, disbudded, any color
2. Floribunda, 1 branch, any color
3. Grandiflora, 1 branch, any color
4. Climbing, 1 branch, any color
5. Miniature, 1 branch, any color
6. Shrub Rose, 1 branch, Red
7. Shrub Rose, Yellow
8. Shrub Rose, Pink
9. Shrub Rose, White
10. Shrub Rose, any color

MADE FOR THE SHADE

DEPARTMENT 90, CLASS 6 HOSTA

Lot

1. Giant, over 12" wide, 1 leaf, green
2. As above, 1 leaf, any other color
3. As above, 1 leaf, margined or streaked
4. Large Leafed, 9"-12" wide, 1 leaf, green
5. As above, 1 leaf, any other color
6. As above, 1 leaf, margined or streaked
7. Medium Leafed, 5"-9" wide, 1 leaf, green
8. As above, 1 leaf, any other color
9. As above, 1 leaf, margined or streaked
10. Small Leafed, 3"-5" wide, 1 leaf, green
11. As above, 1 leaf, any other color
12. As above, 1 leaf, margined or streaked
13. Miniature Leafed, 1"-3" wide, 1 leaf, green
14. As above, 1 leaf, any other color
15. As above, 1 leaf, margined or streaked
16. Dwarf, under 1" wide, 1 leaf, green
17. As above, 1 leaf, any other color
18. As above, 1 leaf, margined or streaked

FLOWER ARRANGEMENTS

DEPARTMENT 90, CLASS 7 ARTISTIC ARRANGEMENTS 2019 Minnesota State Symbols

Use your imagination to create a floral arrangement reflecting the following MN State Symbols. Be creative, e.g., the state drink is milk – create an arrangement around the color white, or cows, or almonds, etc. – whatever image is conveyed to you by the symbol. Some specific requirements are listed with a particular symbol (see below).

Lot

1. **State Motto:** "L'Etoile du Nord" or "Star of the North"
2. **State Bird:** Common Loon
3. **State Butterfly:** Monarch (Please, do not harm any monarchs in creating your design. Remember, they like milkweed.)

4. **State Flower:** Pink and White Lady's Slipper (The flower looks like a moccasin, or slipper, and grows in damp, wooded areas. Remember, it is a protected flower so don't pick any for your arrangement).
5. **State Fish:** Walleye
6. **State Tree:** Red Pine (also called Norway pine)
7. **State Gemstone:** Lake Superior Agate (Your design should include stones, not necessarily agates.)
8. **State Sport:** Ice Hockey
9. **State Drink:** Milk
10. **State Grain:** Wild Rice (This arrangement should include various grasses).
11. **State Fruit:** Honeycrisp Apple
12. **State Muffin:** Blueberry (This arrangement might include blueberry plants, blueberries, and/or blue flowers).
13. **State Mushroom:** Morel (This arrangement should depict the natural wooded environment where mushrooms are found and include mushrooms, but they don't need to be morels).
14. **State Color:** Purple (Go wild or go Prince or both!)

GROW AND SHOW

DEPARTMENT 90, CLASS 8 POTTED PLANT(S)

Plants must have been potted at least four weeks before showing.
All plants in this class must be named and labeled as to type within each lot.

Lot

1. African Violet
2. Begonia - Fibrous-rooted
3. Begonia - Tuberous
4. Bonsai
5. Coleus
6. Cacti
7. Dish garden, minimum of 5 varieties in one container
8. Fern
9. Geraniums
10. Hanging Planter, flowering
11. Hanging Planter, non-flowering
12. Hibiscus
13. Impatiens
14. Jade Plant
15. Orchids
16. Plants with unusual colored leaves
17. Patio Plant, mixed, 3 or more plants
18. Peace Lily
19. Pothos
20. Rubber Plant
21. Sedum
22. Succulents, 3 or more Cacti or Succulents or combination of both in one pot
23. Succulent - other than Jade Plant
24. Fairy Garden
25. Any other not listed

DEPARTMENT 90, CLASS 9 POTTED VINES

Lot

1. Ajuga
2. Ivy (Hedera)
3. Mandevilla
4. Sweet Potato Vine
5. Other

DEPARTMENT 90, CLASS 10 POTTED HERBS

Herbs must be live and potted.

Lot

1. Basil
2. Chives
3. Cilantro
4. Lavender
5. Marjoram
6. Mint
7. Oregano
8. Parsley
9. Rosemary
10. Sage
11. Thyme
12. Any other not mentioned
13. Any 3 different Herbs in one container

DEPARTMENT 90, CLASS 11 YOUTH (UP TO 16 YEARS)

Projects must be done by youth.

Lot

1. A Cut Annual, 3 blooms
2. A Cut Perennial, 3 blooms
3. Potted Plant
4. Hanging Basket, flowering
5. Hanging Basket, non-flowering
6. A collection of Annuals, 3 different kinds, 1 stem each in separate containers
7. A collection of Perennials, 3 different kinds, 1 stem each in separate containers
8. A Bonsai - you should check your exhibit during the fair to assure it gets ample water.
9. Dish Garden
10. Herb(s) in a pot.
11. Largest flower
12. Most fragrant flower
13. Arrangement - My Favorite Holiday (no artificial flowers)
14. Arrangement - Down on the Farm (no artificial flowers)
15. Fairy Garden

DEPARTMENT 100**PRE REGISTER**

(Paperwork) By JULY 30th
ENTRY DAY Monday, Aug. 2nd
10:00 A.M. - 4:00 P.M.

*Not more than one exhibit in any 1 lot
 will be accepted from any exhibitor*

FRUITS AND VEGETABLES**Prizes, Classes 1-12**

1st Prize\$4.00
 2nd Prize.....\$3.00
 3rd Prize.....\$2.00

A sweepstakes ribbon for the greatest number of blue ribbons will be awarded for Department 100. A champion & reserve champion will be awarded in each class, if worthy.

All exhibits must be grown by exhibitor. The exact count is required.

Entries coming in late or not in place by 6:00 P.M., July 25th will not be judged.
NO EXCEPTIONS.

FROM THE ORCHARD**DEPARTMENT 100, CLASS 1****APPLES**

(5 apples each per plate)

Lot

1. Anoka
2. Duchess
3. Fireside or Connell Red
4. Haralson or Haralred
5. Honeycrisp
6. Keepsake

7. Mantet
8. Red Baron
9. State Fair
10. Sweet Sixteen
11. Zestar
12. Any other

DEPARTMENT 100, CLASS 2**CRABAPPLES**

(12 crabapples per plate)

Lot

1. Chestnut
2. Dolgo
3. Whitney
4. Any other variety

DEPARTMENT 100, CLASS 3**PLUMS AND CHERRIES**

(5 plums and 10 cherries per plate)

Lot

1. Cherries
2. Cherry Plum Hybrids
3. Plums, American - red skinned at maturity
4. Plums, European - blue or purplish at maturity

DEPARTMENT 100, CLASS 4**PEARS**

(5 per plate)

Lot

1. Pears, any variety

DEPARTMENT 100, CLASS 5**APRICOTS**

(5 per plate)

Lot

1. Apricots, any variety

DEPARTMENT 100, CLASS 6**BERRIES**

(Display 10 on heavy white paper plates)

Lot

1. Strawberries
2. Raspberries
3. Currants
4. Gooseberries
5. Blueberries
6. Any other berry
7. Wild Fruit (Blueberry or Raspberry)

DEPARTMENT 100, CLASS 7**GRAPES**

Lot

1. Any variety (2 bunches)

DEPARTMENT 100, CLASS 8**FRUIT COLLECTION**

Lot

1. The best display of fruits, 6 plates of different fruits (5 each).

DEPARTMENT 100**FRESH VEGETABLES**

To assist the gardener in selecting and preparing vegetables for exhibit, the following suggestions are made:

BEETS, CARROTS, PARSNIPS,

TURNIPS, RUTABAGAS – Root crops should be mature but not over grown, pithy or course in texture. Tops trimmed off 1 1/4 inches above the crown. Side roots trimmed off but not the tap root. Clean by brushing.

BROCCOLI – Heads should be dark or purplish green and compact. Avoid yellow flowers in head. Stems cut about 5 inches from top of head.

CABBAGE – Stems cut about 1/2 inch below the head. Remove blemished or broken leaves. Leave few wrapper leaves.

CAULIFLOWER – Heads should be white, compact and free of small leaves and ricy texture. Stems cut so as to leave 4 to 6 leaves. Outer leaves trimmed to 1-2 inches above the white head. Use soft bristled brush to remove dirt from head.

CELERY – Remove roots of stalk and trim butt to form a triangle for pyramid. Trim diseased and broken leaves on outside until color is uniform.

CUCUMBERS – Pickling select fruits 3-5 inches long. Specimens should be same stage of maturity and uniform in size, shape and color. Slicers - select fruits that are straight, dark green and 6-10 inches long. They should be uniform in size, shape and color. Leave stems attached. Soft brush clean.

EGG PLANT – Uniform in color and free from bronzing and greening. Stem should be left on.

KOHLRABI – Roots removed just below the ball. Remove all but the center 4-6 leaves. Select specimens that are uniform, medium size and not hard or woody. Skin should be easily punctured by thumbnail. They should be clean but not washed.

LETTUCE – Dig, leaving roots and exhibit in a glass container with leaves above the water, "Harden", see cut flower information.

MUSKMELON – Select fruit that separate easily from the vine. Melons should be mature but not overripe.

ONIONS – Have specimens mature and thoroughly cured. The neck should be small. Do not peel to give a slick appearance. Only such outer scales that are broken or discolored should be removed. Small basal roots should be left intact but trimmed to a uniform length of 1/2 inch. Wipe or brush but do not wash. Cut tops 1-1 1/2 inches long.

PEAS – Select bright green well filled with seeds, the best eating stage. Do not wash as bloom should be preserved.

PEPPERS – Stem should be left 1/2-1 inch long.

RADISHES – Tap root cut 1/2 inch and tops cut to 1/2 inch.

RHUBARB – Select stalks that are straight, uniform and unblemished. Stalks should be pulled from the plant, not cut. Cut off blade leaf 2 inches above the stalk.

SNAP BEANS – Harvest before constrictions appear between seeds, when seeds are about half grown. Pods should be wiped clean but not washed. Leave stems attached.

SUMMER SQUASH – Select small size fruit when the rind is soft and easily punctured with thumbnail. Leave about 1/2 inch of stem and wipe fruits clean.

SWEET CORN – Select ears that are well filled out to the tip. Kernels should be milky and juicy. Remove outer husks but allow a short shank and the inner husk to remain.

SWISS CHARD – Cut and place in clear glass container. “Harden” see cut flower information.

GREEN ONIONS – Peeled roots, trimmed tops, cut uniform 6-8 inches.

TOMATOES – Uniform size, shape and color. Leave 1/2 inch stem on. Fruits should be uniformly shaped and free of cracks and blemishes. Wrap tomatoes when transporting so stems don’t puncture the others.

WATERMELONS – Select fruit that are mature but not overripe. Leave 1 inch of stem on.

DEPARTMENT 100, CLASS 9 MELONS

Lot

1. Muskmelon
2. Watermelon

DEPARTMENT 100, CLASS 10 FRESH VEGETABLES

Lot

1. Beans, Green String, 12 specimens
2. Beans, Yellow Wax, 12
3. Beans, Purple, 12
4. Beets, Table, 6
5. Broccoli, 1
6. Cabbage, Pointed, 1
7. Cabbage, Flat, 1
8. Cabbage, Round, 1
9. Carrots, 6
10. Cauliflower, 1
11. Celery, 1 bunch
12. Cucumbers, Sweet pickles, under 3 inches, 6
13. Cucumbers, Dill pickles, 3-5 inches, 6
14. Cucumbers, Slicing, 3
15. Garlic, 3 specimens
16. Gourds - large type, 1
17. Gourds - small type, 3
18. Ground Cherries, 12
19. Eggplant, 1
20. Kohlrabi, 3
21. Lettuce, 1 plant
22. Lettuce, Romaine, 1 plant
23. Onions, Yellow, 3
24. Onions, Red, 3
25. Onions, White, 3
26. Onions, Table, 6
27. Parsnips, 6
28. Peas, 12 pods
29. Peppers, Sweet Bell, 3
30. Peppers, Long Sweet, 3
31. Peppers, Jalapeño, 3
32. Peppers, Any other hot, 3
33. Pumpkins, Pie, 1
34. Pumpkins, Mini, 3
35. Red Radishes, 6
36. Rhubarb, 6
37. Rutabagas, 3

38. Snow Peas, 12
39. Squash, Acorn, 1
40. Squash, Buttercup, 1
41. Squash, Hubbard, 1
42. Squash, Summer, 1
43. Squash, Zucchini, 1
44. Any other squash not mentioned
45. Swiss Chard, 3 leaves
46. Tomatoes, Red, 3
47. Tomatoes, Yellow, 3
48. Tomatoes, Green, 3
49. Tomatoes, Cherry, 12
50. Turnips, 3
51. Any other vegetable not mentioned

DEPARTMENT 100, CLASS 11 YOUTH’S FRESH VEGETABLES

This class is open to youth under 16 years of age. Must be grown and exhibited by the young person.

Lot

1. Bean, Green String, 12 specimens
2. Bean, Yellow Wax, 12
3. Broccoli, 1
4. Cabbage, 1
5. Carrots, 6
6. Celery, 1
7. Cucumber, Slicing, 3
8. Cucumber, Pickling, 6
9. Gourds - large type, 1
10. Gourds - small type, 3
11. Onion, White, 3
12. Onion, Yellow, 3
13. Peas- 12 pods
14. Peppers, Sweet Bell, 3
15. Peppers, Jalapeño, 3
16. Peppers, Any other, 3 of one variety
17. Potatoes, 6 specimens
18. Pumpkin, Pie, 1
19. Squash, Buttercup, 1
20. Squash, Zucchini, 1
21. Squash, Any other, 1
22. Sweet Corn, Not husked, 3
23. Swiss Chard, 1
24. Tomato, Cherry, 6
25. Tomato, Red, 3
26. Tomato, Green, 3
27. Any other, appropriate amount
28. Make a veggie animal with at least 3 vegetables

DEPARTMENT 100, CLASS 12 POTATOES

Requirements: Exhibit 10 Potatoes.

Lot

1. Anoka
2. Chieftain
3. Gold Rush
4. Kennebec
5. Norgold
6. Norktah
7. Norland
8. Norland, Red
9. Red Pontiac
10. Russet Burbank
11. Superior

12. Yukon Gold
13. Other red varieties not listed above
14. Other white varieties not listed above
15. Fingerling Potato

DEPARTMENT 100, CLASS 13 NOVELTIES

Lot

1. Biggest Pumpkin
2. Largest Tomato
3. Longest Carrot
4. Longest Cucumber
5. Largest Head of Cabbage
6. Largest Squash
7. Largest Onion
8. Largest Potato
9. Largest Pepper
10. Largest Beet
11. Tallest Corn Stalk

DEPARTMENT 110

PRE REGISTER
(Paperwork) By JULY 30th
ENTRY DAY Monday, Aug. 2nd
10:00 A.M. - 4:00 P.M.

*Not more than one exhibit in any 1 lot
will be accepted from any exhibitor*

FIELD CROPS Prizes, Classes 1-6

1st Prize	\$4.00
2nd Prize	\$3.00
3rd Prize	\$2.00

A sweepstakes ribbon for the greatest number of blue ribbons will be awarded for Department 110. A champion and reserve champion will be awarded in each class, if worthy.

The superintendent reserves the right to inconspicuously mark the exhibit so it is not shown another year.

Sheaves or bundles should be neatly tied in the middle and near the base, with the ties evenly trimmed. Corn stalks should be cut so the roots remain in the ground.

DEPARTMENT 110, CLASS 1 THRESHED GRAINS

Exhibits must not have been shown in previous years. Exhibit in 1-qt. clear jar.

Lot

1. Barley
2. Buckwheat
3. Shelled Corn
4. Oats
5. Rye
6. Wheat
7. Sunflower Seeds
8. Any other

**DEPARTMENT 110, CLASS 2
GRASS AND FORAGE SEED
THRESHED**

Exhibits must not have been shown in previous years.

Lot

1. Alfalfa
2. Clover - medium
3. Clover, alsike
4. Clover, sweet
5. Timothy
6. Soy Beans
7. Any other

**DEPARTMENT 110, CLASS 3
SHEAF GRAINS**

Exhibits must not have been shown in previous years. Sheaves to be 2 inches at middle band, to be judged on basis of straw and filled heads.

Lot

1. Barley
2. Oats
3. Rye
4. Wheat
5. Any other

**DEPARTMENT 110, CLASS 4
SHEAF GRASSES & OTHER CROPS**

Exhibit must not have been shown in previous years. Sheaves to be 2 inches at the middle band, to be judged on basis of feed value.

Lot

1. Alfalfa
2. Clover, Medium
3. Clover, Alsike
4. Clover, Sweet
5. Timothy
6. Soy Beans
7. Reed Canary Grass
8. Corn, Grain, early 85 days and under, 3 stalks
9. Corn, Grain, mid-season 86-95 days, 3 stalks
10. Corn, late 96 days and over, 3 Stalks
11. Corn, Silage, 3 stalks
12. Brome Grass
13. Oat Hay
14. Mixed Hay
15. Any other

**DEPARTMENT 110, CLASS 5
CORN, NEW**

Exhibit 6 ears. Only this year's corn to be entered. (no husking)

Lot

1. Hybrid, early, 85 days and under
2. Hybrid, mid-season, 86-95 days
3. Hybrid, late, 96 days and over
4. Popcorn
5. Any other corn

**DEPARTMENT 110, CLASS 6
CORN, OLD**

Exhibit 6 ears. Only last year's corn to be entered. (Husked)

Lot

1. Hybrid, early, 85 days and under
2. Hybrid, mid-season, 86-95 days
3. Hybrid, late, 96 days and over
4. Popcorn
5. Any other corn

DEPARTMENT 120

YOUTH ART

REGISTRATION PAPERWORK

By July 30th

**ENTRY DAY Monday, Aug. 2nd
ONLY 11:00 AM - 5:00 PM**

No Model Guns, Knives or Weapons
Please make an effort to only pre-enter projects you are reasonably sure your child will bring. The administrative costs, paper tags and time to process the "no show" projects are overwhelming. Thank you for your help. -Youth Arts Dept

**DEPARTMENT 120
FREE ILLUSTRATIONS
CREATIVE DESIGN - LOTS 1-20**

**NO WORK LARGER THAN 22"x28"
(Tag Board Size)
Prefer exhibits unframed**

Lot

1. Acrylic
2. Chalk or Charcoal
3. Computer Art (original, freehand)
4. Crayon
5. Cut Paper
6. Tempra Paint
7. Felt Tip Marker
8. Finger Paint
9. Glitter Glue
10. Ink
11. Oil
12. Oil pastel or Cray Paux
13. Paint by Number
14. Pencil
15. Pencil, Colored
16. Photography - Black & White 8"x12" or less (1 photo only)
17. Photography - Color 8"x12" or less (1 photo only)
18. Print Making
19. Water Color
20. Any other media not listed (does not qualify if you have entered like item in lots 1-19)

**DEPARTMENT 120
HANDICRAFT - LOTS 21-81**

Lot

21. Bead Work
22. Booklets
23. Candle Making
24. Ceramic (purchased greenware, decorated)
25. Chenille Stems
26. Christmas Crafts
27. Clay (fired, hand built)
28. Clay (fired, wheel thrown)
29. Clay Sculpture (not fired)
30. Collage
31. Collection (no stamps or coins)
32. Creative Writing (2 typed pages)
33. Cross Stitch
34. Decorated T-shirts
35. Decoupage
36. Diorama
37. Duct Tape
38. Embroidery
39. Fabric
40. Felt
41. Foam Art
42. Greeting Cards (assortment of 3)
43. Holiday Craft (any other, not Christmas)
44. Homemade Fishing Tackle
45. Jewelry
46. Knex, non-lego (original - no kits)
47. Leather
48. Lego (original - no kits)
49. Macrame
50. Metal
51. Mobiles
52. Models
53. Mosaics, tiles
54. Nature Art
55. Origami
56. Paper Mache or Plaster Strips
57. Picture Frames
58. Plaster of Paris
59. Plastic
60. Plastic Canvas
61. Poems (limit 2 pages)
62. Posters, 22"x28" or less
63. Pressed Flowers
64. Puppet Toy
65. Recycled Art
66. Refrigerator Magnets (hand made)
67. Rubber Stamping
68. Scrapbooking
69. Scratch Art
70. Seeds or Macaroni (pictures)
71. Seeds or Macaroni (other)
72. Stained Glass
73. Stationary (assortment of 3)
74. Soap Making
75. String Design
76. Glass Etching
77. Wood (purchased or decorated)
78. Wood (original construction)
79. Woodburning
80. Yarn
81. Any other not listed (does not qualify if you have entered like item in lots 21-80)

You will not be able to place an entry in Lots 20 and 80 (Any other media not listed) if you have already placed an item in a lot the entry would fit in.

Work is classified as to the grade in which it was completed. Work done in the summer will be classified as to the grade just completed. (Example: work done the summer after 4th grade would be classified as 4th grade.) Work must be current. Only one entry per lot.

Sweepstakes ribbons will be awarded for Department 120.

Prizes, Classes 1-11

1st Prize	\$2.50
2nd Prize.....	\$2.00
3rd Prize.....	\$1.50

**DEPARTMENT 120, CLASS 1
GRADE 1**
Lots the same as Class 1

**DEPARTMENT 120, CLASS 2
GRADE 2**
Lots the same as Class 1

**DEPARTMENT 120, CLASS 3
GRADE 3**
Lots the same as Class 1

**DEPARTMENT 120, CLASS 4
GRADE 4**
Lots the same as Class 1

**DEPARTMENT 120, CLASS 5
GRADE 5**
Lots the same as Class 1

**DEPARTMENT 120, CLASS 6
GRADE 6**
Lots the same as Class 1

**DEPARTMENT 120, CLASS 7
GRADE 7**
Lots the same as Class 1

**DEPARTMENT 120, CLASS 8
GRADE 8**
Lots the same as Class 1

**DEPARTMENT 120, CLASS 9
GRADE 9**
Lots the same as Class 1

YOUTH PROJECT WORK

**DEPARTMENT 120, CLASS 12
GRADES 7-8-9**

**DEPARTMENT 120, CLASS 10
PRE-SCHOOL**
Lots the same as Class 1

**DEPARTMENT 120, CLASS 11
KINDERGARTEN**
Lots the same as Class 1

Prizes, Class 12

1st Prize	\$2.50
2nd Prize.....	\$2.00
3rd Prize.....	\$1.50

This work may be part of a school project or may have been done in school. Include typed explanation of how project was done.

Lot

1. Mechanics, Heat, Light, Sound
2. Electrical
3. Chemistry
4. Zoology
5. Botany
6. Conservation
7. Geology, Weather, Astronomy
8. Computer Project (print into booklet or poster)
9. Digitally Altered Photography (examples: Photoshop or Camera features)

EXHIBITION OF LIVESTOCK IN MINNESOTA REQUIREMENTS

GENERAL REQUIREMENTS -

Livestock, poultry and companion animals that exhibit symptoms of any infectious or communicable disease, including ringworm and warts, may not be exhibited. All animals must be examined by the official veterinarian, the barn superintendent or one of the barn superintendent's staff on the day they are admitted to the exhibition and prior to entry to the barn. All animals will be visually examined by the official veterinarian at least once daily during the exhibition. All imported animals must be accompanied by a certificate of veterinary inspection and satisfy the Board of Animal Health requirements.

CROW WING COUNTY FAIR REQUIREMENTS -

Animals with signs of contagious disease including: warts, ringworm, diarrhea, and excessive nasal discharge can be removed from the exhibition area, immediately upon discovery, at any time during the course of the fair if determined necessary by the official veterinarian or barn superintendent.

The official veterinary can refuse entry of any animals that could be perceived by the general public as having been abused or neglected. This includes but is not limited to animals with: excessive insect bites or hair loss, bruising or evidence of physical trauma, lameness or severe weight loss.

Exhibitors or relatives of exhibitors engaging in poor sportsmanship - like displays towards other exhibitors, judges or Fair Livestock Officials, or endangering the welfare of animals, fair guests, other exhibitors or Fair Livestock Officials, can be asked by the barn superintendent or the official veterinarian to leave the fairgrounds. At the combined discretion of the barn superintendent, fair manager and fair board, such exhibitors and their entries may be physically removed from the fairgrounds, their entries may be disqualified, and the exhibitor may be banned from exhibiting at the CWC fair for a period of one year.

CATTLE -

Cattle must be individually identified with an official ear tag or tattoo accompanied by breed registration papers. Official ID may be a 9-digit tag beginning with '41', a 8 or 9 digit tag beginning with 'USA', 15-digit tags beginning with '840' or '900-998' or breed registration tattoos accompanied by registry documentation.

SHEEP AND GOATS -

All sheep and goats, including wethers, must be identified with official identification approved for use in the Scrapie eradication program. Official identification includes USDA Scrapie identification tags and tattoos approved by the Board of Animal Health. Sheep and goats within 30 days of giving birth (before and after) cannot be exhibited without prior approval from the Board of Animal Health.

SWINE -

Swine must be individually identified with an official ear tag or tattoo accompanied by breed registration papers. Official ID may be a 9-digit tag beginning with '41' or 15-digit tags beginning with 'USA', '900 - 998', or breed registration tattoos.

HORSES -

All members of the equine species including: horses, mules, asses, ponies, donkeys, burros and zebras, must be negative to an official test for Equine Infectious Anemia (EIA) within 12 months prior to the opening date of the exhibition. A test is not required for suckling foals accompanying a negative dam.

POULTRY -

Chickens, turkeys, and game birds, except baby poultry, must be individually identified with a leg or wing band. Chickens, turkeys, game birds, and hatching eggs from these birds must be accompanied by a certificate or test chart to show that they originate from a hatchery or breeding flock that is classified pullorum-typhoid

clean or are negative to a pullorum-typhoid test within 90 days prior to the opening date of the exhibition. Turkeys and turkey hatching eggs must be accompanied by a certificate or test chart to show that they originate from a hatchery or breeding flock that is classified Mycoplasma gallisepticum clean and Mycoplasma synoviae clean or are negative to a Mycoplasma gallisepticum and a Mycoplasma synoviae test within 90 days prior to the opening date of the exhibition.

DOGS -

Dogs over four months of age must be accompanied by a current certificate of rabies vaccination issued by a licensed veterinarian. Dogs are not allowed on the fairgrounds other than for the purpose of exhibition or as aids to disabled individuals.

DEPARTMENT 200

OPEN CLASS HORSES

REGISTRATION PAPERWORK By July 30th

Horses Trailers must enter NORTH GATE of Fairgrounds on Wright Street. Signs Posted.

Any exhibitor removing exhibits before specified time will forfeit all privileges and premiums and may not show for one full year.

"Horse" as stated, refers to Mini, Pet Pony, Pony, Horse, Mule, Donkey or Draft.

All horses must have a negative Equine Infectious Anemia test within 12 months prior to the opening date of the exhibition. A test is not required for suckling foals accompanying a negative dam.

COGGINS TEST WILL BE REQUIRED!

January 1st shall be used as the date in determining the age groups for all entrants.

A fee of \$2.00 will be charged for a tie stall for each horse entered. If a Box Stall is required, the entry fee will be \$10.00. Fees must accompany entries in the PONY, MINI, BRIDLE PATH, STOCK HORSE HALTER, OBSTACLE & COSTUME. Classes will be accepted from 9:00 A.M. to 3:00 P.M. the THIRD DAY of the Fair.

For advance stall reservations
Text Tammy Blazek @218-820-8763 with number of stalls needed, on June 25, 2021, she will reply by text.
*Stalling fee is \$10.00 per box stall
\$2.00 per tie stall

Horse Superintendent Tammy Blazek is the Only person to contact for stalls... DO NOT go to the barn and just put your name on a stall... it will be reserved for you and your name be removed. People who do not reserve their stall that day will be allotted stalls on a first come first serve basis. Entry fees must accompany reservations. There are a limited number of box stalls available. The Fair reserves the right to close entries whenever all the space is reserved. Stallions only will be allowed to show out of their trailer. A \$10.00 entry fee will be charged to each out of trailer entry. A horse cannot be entered in the STOCK class and also be entered in the PONY or BRIDLE PATH. Horses can only be entered in one breed class. Horses entered in 4-H may also enter in the Open Class of their respective breed. Only barn workers will be allowed in the Horse Barn after 10:30 pm. There will be no sleep-overs. The cleaning of the stalls will be the responsibility of the entrants and are asked to place the stall cleanings **INTO** the provided manure trailer.

****No one is allowed to leave until TAMMY OR JENNY have checked your stalls to approve clean-up.*******

Minnesota Board of Animal Health
625 North Robert Street
St. Paul, MN 55107
Phone: 651-296-2942
Fax: 651-296-7417

THURSDAY AUGUST 5, - 4:00 P.M. DEPARTMENT 200, CLASS 1 IN HAND OBSTACLE CLASS Horses can be shown only ONCE

Lot:

1. Mini-under 38"-17 yrs old & under
2. Mini-under 38"-18 yrs & over
3. Pet Pony-39"-48"-17yrs old & under
4. Pet Pony-39"-48"-18 & over
5. Pony-49"-54"-17 yrs old and under
6. Pony-49"-54"-18yrs old & over

DEPARTMENT 200, CLASS 2 OPEN TRAIL CLASS

Lot:

1. 17 yrs & under
2. 18 yrs & older

THURSDAY AUGUST 5, -6:00 P.M.

****TINY TOT SHOW****

Age up to completion of 2nd grade
Ribbons only
\$5.00 Class Entry Fee
*Entry Fee Waived if stalling
*Stalling fee is \$10.00 per box stall
\$2.00 per tie stall.
Can only enter One -in either Lead line OR Ride Alone
horse can be rode more than once...once in Lead line and once in ride alone.

DEPARTMENT 200, CLASS 3 TINY TOT WALK/TROT PLEASURE

Lot:

1. Lead Line
2. Ride Alone

DEPARTMENT 200, CLASS 4 TINY TOT EGG & SPOON

Lot:

1. Lead Line
2. Ride Alone

DEPARTMENT 200, CLASS 5 TINY TOT BARRELS

Lot:

1. Lead Line
2. Ride Alone

DEPARTMENT 200, CLASS 6 TINY TOT POLES

Lot:

1. Lead Line
2. Ride Alone

DEPARTMENT 200, CLASS 7 TINY TOT KEY

Lot:

1. Lead Line
2. Ride Alone

DEPARTMENT 200, CLASS 8 OPEN BARREL RUN

****NOT BEFORE 6:00 PM****

**100% PAY BACK OF ENTRY
FEE FOR THE TOP 3 PLACING PER
AGE GROUP**

1ST-50% / 2ND -30% / 3RD -20%
\$15.00 entry fee
\$15.00 office fee

Horses allowed to run once
Entries from 5:00-7:00 pm

Lot:

1. Youth 10 & under
2. 11-17 yrs. old
3. 18 yrs. & older

CWC BARREL RUN RULES: A barrel race is a timed event using 3 alike barrels set in a cloverleaf pattern, barrels must be empty and will not have weights in them to make them less likely not to tip over.

HORSE CAN ONLY RUN ONCE.
RIDER CAN RIDE MORE THAN ONE
HORSE, PAYING FEES FOR ALL
HORSES.

Attire requirements are a hat/helmet,
long or short sleeve shirt with a collar,
jeans and boots with heels. NO TANK
TOPS OR SPORTS BRAS, STYLE,
SPORTS OR TENNIS SHOES.

The starting gate, the start/finish line
and barrel position will remain the same
throughout the entire event.

Only one horse in the arena at one
time.

The rider may enter the pattern from
the right or left side. The pattern will be
set up and run as follows.

*The first two (2) barrels to be placed 21
feet or beyond the time line, at least 21
feet away from the side of the arena and
at least 21 from the third (3) barrel.

*Any time the rider crosses the starting
line, time begins and time will end any
time the rider/horse crosses the line
again. *The ground conditions around
the barrels will be dragged after every
7th contestant. *If a barrel is moved off
its marker during the competition, the
barrel must be reset prior to the next
competitor runs

"NO TIMES" will be given for the
following:

- Touching the barrel with your hand
- Broken pattern
- Knocked Barrel
- If rider falls off
- For running out of turn. It is the
contestant's responsibility to run in
the order call with the correct horse

Penalty of 1 second will be added to to
time for hat falling off to ground

FRIDAY, AUGUST 6th -9:00 A.M.

Prizes for Classes 8-12 & 14

1st place\$20.00
2nd place.....\$15.00
3rd place\$10.00

Grand and Reserve award in each
Class 8-12 in Department 200.

DEPARTMENT 200, CLASS 9 OPEN HALTER SHOW MINI-UNDER 38" HALTER

Lot:

- 2 yrs. & under
- Mares 3yrs & older
- Geldings & Stallions 3 yrs. & older

Grand & Reserve

Stallion
Geldings
Mares

DEPARTMENT 200, CLASS 10 PET PONY 39"-48" HALTER

Lot:

- 2 yrs. & under
- Mares 3yrs & older
- Geldings & Stallions 3 yrs. & older

Grand & Reserve

Stallion
Geldings
Mares

DEPARTMENT 200, CLASS 11 PONY 49"-54" HALTER

Lot:

- 2 yrs. & under
- Mares 3yrs & older
- Geldings & Stallions 3 yrs. & older

Grand & Reserve

Stallion
Geldings
Mares

DEPARTMENT 200, CLASS 12 BRIDAL PATH HALTER

Lot:

- 2 yrs. & under
- Mares 3yrs & older
- Geldings & Stallions 3 yrs. & older

Grand & Reserve

Stallions
Geldings
Mares

DEPARTMENT 200, CLASS 13 STOCK HORSE HALTER

Lot:

- 2 yrs. & under
- Mares 3yrs & older
- Geldings & Stallions 3 yrs. & older

Grand & Reserve

Stallions
Geldings
Mares

DEPARTMNT 200, CLASS 14 *WSCA OPEN PLEASURE SHOW* Judge: Dawnn Taylor

Senior+35 yrs. old and up
Senior18 – 34 yrs. old
Intermediate..... 14 – 17 yrs. old
Junior.....11 – 13 yrs old
PeeWee..... 10 yrs old - under

Entry Fees: \$5.00 per class, per horse &
rider combination *****NO REFUNDS**
*** (classes close 2 classes prior)

Ribbons 1st thru 6th
Pay Back—1st place...\$8.00
2nd place...\$5.00
3rd place...\$3.00

High Point Trophies: 1 trophy per age
division games & pleasure combined. *
means qualification for High Point
We reserve the right to combine, split or
cancel classes. There will be no refunds.
Show will be held rain or shine. All
horses must have a current negative
coggins test. Coggins must be presented
at the time of registration.

- P.W. Showmanship Halter*
- Jr. Showmanship Halter*
- Int. Showmanship Halter*
- Sr. Showmanship Halter*
- Sr+. Showmanship Halter*
- PW. English Pleasure*
- Jr. English Pleasure*
- Int. English Pleasure*
- Sr. English Pleasure*
- Sr+. English Pleasure*
- PW. English Equitation*
- Jr. English Equitation*
- Int. English Equitation*
- Sr. English Equitation*
- Sr+. English Equitation*
- Walk trot 10 & under (west pleas)
- Walk Trot 11 & over (west pleas)

- Lead Line 6 yrs & under
- PW. Western Pleasure*
- Jr. Western Pleasure*
- Int. Western Pleasure*
- Sr. Western Pleasure*
- Sr+. Western Pleasure*
- Non-Stock Type Western Pleasure*
- 2 & 3 yr old Western Pleasure*
- PW Western Horsemanship*
- Jr Western Horsemanship*
- Int. Western Horsemanship*
- Sr. Western Horsemanship*
- Sr+. Western Horsemanship*
- Open Costume Class

DEPARTMENT 200, CLASS 15 OPEN COSTUME CLASS

Lot:

- In Hand
- Ride or Drive

FRIDAY, AUGUST 6 – 6:00 P.M. DEPARTMENT 200, CLASS 15 PERFORMANCE SHOW

Lot:

- 6 Horse Hitch, Draft Horse
\$100.00 \$75.00 \$50.00
- Adult Single Cart Pony 18 yrs. &
over
\$25.00 \$15.00 \$10.00
- Adult Single Cart Mini Horse -18
yrs. & over
\$25.00 \$15.00 \$10.00
- Children Single Cart Pony
\$25.00 \$15.00 \$10.00
- 4 Horse Hitch, Draft
\$75.00 \$50.00 \$30.00
- Children Single Cart Mini Horse
\$25.00 \$15.00 \$10.00
- Unicorn Hitch, Draft Horse
\$50.00 \$30.00 \$20.00
- Farmers Team Draft Horse
\$60.00 \$40.00 \$30.00

9. Commercial 2 Horse Draft Team
\$60.00 \$40.00 \$30.00
10. Junior Driving Team -15yrs. & under
\$60.00 \$40.00 \$30.00
11. Mini Horse Team
\$30.00 \$20.00 \$10.00
12. Ladies Single Cart Draft Horse
\$40.00 \$35.00 \$30.00
13. Team under 50" Pony
\$30.00 \$20.00 \$10.00
14. Men's Single Cart Draft Horse
\$40.00 \$35.00 \$30.00
15. Mule & Donkey Team Driving
\$30.00 \$20.00 \$10.00
16. Light Horse Driving
\$25.00 \$15.00 \$10.00
17. Single Driving Farmers Cart
\$30.00 \$20.00 \$10.00
18. Super Team
\$60.00 \$40.00 \$30.00
19. Draft Horse Barrels
\$15.00 \$10.00 \$5.00
20. Draft Horse Egg & Spoon
\$15.00 \$10.00 \$5.00

SATURDAY, AUGUST 7- 8:00 AM
DEPARTMENT 200, CLASS 16

WSCA OPEN GAME SHOW WSCA JUDGE

Senior+35 yrs and up
Senior18 yrs -34 yrs
Intermediate.....14 yrs-17 yrs
Junior.....11 yrs -13 yrs
PeeWee.....10 yrs & under

Entry Fees: \$5.00 per class, per horse
and rider combination

*****NO REFUNDS****

(classes close 2 classes prior)

\$10.00 Side Pot Classes

100% Pay back in Side Pots

Ribbons 1st thru 6th
Pay back—1st place ...\$8.00
2nd place...\$5.00
3rd place....\$3.00

High Point Trophies: 1 trophy per
age division games & pleasure
combined

Side pot classes are calculated by using
times from your run in the
corresponding age group class. You
must register in your age group to
qualify for Side Pot.

We reserve the right to combine, split or
Cancel classes.

There will be no refunds.

Show will be held rain or shine. All
horses must have a current negative
Coggins test. Coggins must be
presented at the time of registration.

1. Egg & Spoon 17 yrs & under
2. Egg & Spoon 18 yrs & older
3. PW Pole Weaving*

4. Jr. Pole Weaving*
5. Int. Pole Weaving*
6. Sr. Pole Weaving*
7. Sr.+ Pole Weaving*
8. Side Pot Weaving (times taken from
3-6)
9. P.W. Key Race*
10. Jr. Key Race*
11. Int. Key Race*
12. Sr. Key Race*
13. Sr.+ Key Race*
14. P.W. Barrels*
15. Jr. Barrels*
16. Int. Barrels*
17. Sr. Barrels*
18. Sr.+ Barrels
19. Side Pot Barrels (times taken from
13-17)
20. P.W. Jumping Figure 8*
21. Jr. Jumping Figure 8*
22. Int. Jumping Figure 8*
23. Sr. Jumping Figure 8*
24. Sr.+ Jumping Figure 8*
25. P.W. Pennant Race*
26. Jr. Pennant Race*
27. Int. Pennant Race*
28. Sr. Pennant Race*
29. Sr.+ Pennant Race*
30. P.W. Speed Dash*
31. Jr. Speed Dash*
32. Int. Speed Dash*
33. Sr. Speed Dash*
34. Sr.+ Speed Dash*
35. Open 4 In Line
36. Open Ribbon Race
37. Rescue Race

*means qualification for High Point

For questions contact:

Tammy Blazek—
tkblazek@msn.com

Jennifer Peterson—
samuelboone595@gmail.com

DEPARTMENT 210

OPEN CLASS DAIRY CATTLE

REGISTRATION PAPERWORK

By July 29th

**ENTRY DAY Thursday, Aug. 5th
8:00 A.M. - 10 A.M.**

*An award will be given by AMPI for the
outstanding dairy animal exhibited in
Open Class Dairy Cattle.*

**Notify Superintendent prior to Fair
and give number of animals you
have coming to Fair. This includes
4H, Open Class and F.F.A.**

1. An entry fee of \$2.00 for each lot
entered will be required. Due by
JULY 29th. A \$5.00 late fee will be
required after deadline date for each
lot entered.

2. Open Class Cattle entries will be
accepted on Thursday from 8 A.M.
to 10 A.M. Lactating animals must
be entered by 10 A.M. on show day
and are required to leave at least
one lactating cow per exhibitor for
the duration of the Fair. A milking
parlor is available. Please call Bob
Dambow (829-8190) by July 29th
for reservations.
3. Dual entries will be permitted in
each class/lot.
4. Ages of animals will be determined
as of September 1st.
5. Blue ribbon winners in ALL 4-H
LIVESTOCK SPECIES may exhibit
in open class if space is available.
6. Minnesota Board of Animal Health
rules including animal identification
requirements will be enforced by
official fair veterinarian. See page
76.
7. Beef and Dairy cattle will be
released beginning at 8:00 P.M. last
day of fair.
8. Removing animals prior to release
time will forfeit premiums earned.
9. Each exhibitor is to keep their stall
area clean and orderly.
10. Registered livestock shall not
compete against grade when stated.
11. **Exhibitor shall be prepared to
show ownership or proof of
registry at time of entry.**

DEPARTMENT 210, CLASSES 1-14

Class

1. Novice Heifer Calf
Born 3/1/21 or After
2. Winter Calf
12/1/20 to 2/29/21
3. Fall Calf
9/1/20 to 11/30/21
4. Summer Junior Yearling
6/1/20 to 8/31/20
5. Spring Junior Yearling
3/1/20 to 5/31/20
6. Winter Senior Yearling
12/1/20 to 2/28/21
7. Fall Senior Yearling
9/1/20 to 11/30/20

Prizes: Class 1-14

1st.....\$22.00	5th..... \$8.00
2nd\$17.00	6th \$5.00
3rd\$14.00	7th \$4.00
4th\$11.00	8th \$4.00

JUNIOR CHAMPION & RESERVE CHAMPION-ALL BREEDS

(Top 2 from Classes 1-7 compete, no
premium, ribbons only)

Class

8. Junior 2 yr old
3/1/19 to 8/31/19
9. Senior 2 yr old
9/1/18 to 2/28/19
10. 3 yr old Cow
9/1/17 to 8/31/18

11. 4 yr old Cow
9/1/16 to 8/31/17
12. 5 yr old Cow and older
Born before 9/1/16
13. Dry Cow
3 and 4 yrs
14. Advanced Dry Cow
Over 4 yrs

Lot

1. Registered Holstein
2. Registered Ayrshires
3. Registered Brown Swiss
4. Registered Guernsey
5. Registered Jersey
6. Grade Holstein
7. Grade Ayrshire
8. Grade Brown Swiss
9. Grade Guernsey
10. Grade Jersey
11. Crossbred Dairy Cattle

**SENIOR CHAMPION & RESERVE
CHAMPION-ALL BREEDS**

(Top 2 from Classes 8-14 compete, no premium, ribbons only)

**OVERALL GRAND & RESERVE
CHAMPION-ALL BREEDS**

(Junior and senior grand and reserve champions compete, no premium, just ribbons and trophy)

**DEPARTMENT 210, LOT 14
GROUPS CLASSES 15-21**

All breeds compete
Prizes: Class 15-21

Class

15. Best Uddered Cow
16. Junior Best of Three
(3 heifers under 2 yrs - same herd)
17. Senior Best of Three (3 females 2 yrs and over - same herd)
18. Daughter and Dam pair
19. Produce of Dam
(2 females with same Dam)
20. Get of Sire
(3 females with same Sire)
21. Dairy Herd (Calf, Junior or Senior yearling, 2 yrs old, 3 yrs and older)

**DEPARTMENT 215 LOT 13
COW/CALF PEN**

****All breeds together, not shown in halter classes** ONLY Crow Wing County farmers/ranchers 4-H and FFA members -NOT ELIGIBLE FOR THIS CLASS Cows 2 years and over with current year calf. Pairs stalled & exhibited in pen (need not be halter broken). Cattle must have a temperament to be exhibited; animals determined to be unsafe will be sent home. Animals will arrive on Tuesday morning at 8:00 a.m. to noon. Stay for the duration of the fair, stalls must be kept clean).**

Class 18. Cow/Calf Pen Class

DEPARTMENT 215

OPEN CLASS BEEF CATTLE

REGISTRATION PAPERWORK

By July 29th

**ENTRY DAY Thursday, Aug. 5th
8:00 AM - Noon**

*An award will be given by
"Centra Sota Co-op" - Little Falls
for the Outstanding Open Class
Beef Animal exhibited*

**Notify Superintendent prior to Fair
and give number of animals you
have coming to Fair. This includes
4H, Open Class and F.F.A.**

Rules are the same as Open Class Dairy Cattle. Each animal may exhibit in only one class with the exception of group classes where an animal may be entered in more than one group class. However, cow/calf pairs may be split up so mothers can show in Cow class and calves can show in Heifer under one year and Bull or Steer under one year.

Prizes: Classes 1-14

1st.....\$22.00	5th.....\$8.00
2nd.....\$17.00	6th.....\$5.00
3rd.....\$14.00	7th.....\$4.00
4th.....\$11.00	8th.....\$4.00

In the case of a single entry in a class/lot the judge may determine the champion at that time.

**DEPARTMENT 215, CLASSES 1-9
REGISTERED BEEF CATTLE**

Class

1. Bull Calf born after
1/1 of Current Year
2. Spring Heifer Calf Born after
1/1 of Current Year
3. Fall Heifer Calf
9/1/20 to 12/31/20
4. Summer Yearling Heifer
5/1/20 to 8/31/20
5. Junior Yearling Heifer
1/1/20 to 4/30/20
6. Senior Yearling Heifer
9/1/19 to 12/31/19
7. Cow
2 and 3 yrs old
8. Cow
4 yrs and older
9. Cow/Calf (Bull, Heifer or Steer Calf)

Lot

1. Registered Black Angus
2. Registered Red Angus
3. Registered Hereford
4. Registered Simmental
5. Registered Charolais
6. Registered Gelbvieh
7. Registered Saler

8. Registered Shorthorn
9. Registered Other Breeds
10. Commercial Beef Cattle

**DEPARTMENT 215, CLASSES 10-14
LOT 11 - MARKET BEEF**

Class

10. Beef Feeder Steer
born after 1/1/Current Year
11. Beef Steer
over 1 yr under 2 yr
12. Dairy Feeder Steer
born after 1/1/Current Year
13. Finished Dairy Steer
over 1 yr, under 2 yr
14. Market Heifer
over 1 yr, under 2 yr

BEEF SHOW ORDER

For grand and reserve (top 2)
in each class ribbons only.

Bulls

Heifers (youngest to oldest)

Cows

Cow/Calf

Market Beef

Market Dairy

OVERALL

Champion Black Angus

Champion /Red Angus

Hambion Hereford

Champion Simmental

Champion Charolais

Champion Gelbvieh

Champion Saler

Champion Shorthorn

Champion Registered Other Breeds

Champion Commercial

Champion Market Beef

Champion Dairy Beef

DEPARTMENT 215

LOT 12 - GROUP CLASSES

*****ALL BREEDS COMPETING*****

Registered & Commercial

Beef Cattle Together

Prizes: Classes 23 - 25

1st	\$25.00
2nd	\$20.00
3rd	\$15.00
4th	\$10.00
5th	\$10.00
6th	\$8.00
7th	\$6.00
8th	\$6.00

Class

15. Produce of Dam
(2 animals from same Dam)
16. Pair of Heifers
(2 heifers from same Herd)
17. Get of Sire
(3 animals with same Sire)

DEPARTMENT 215

LOT 13 — COW/CALF PEN

****All breeds together, not shown in halter classes** ONLY Crow Wing County farmers/ranchers 4-H and FFA members -NOT ELIGIBLE FOR THIS CLASS Cows 2 years and over**

with current year calf. Pairs stalled & exhibited in pen (need not be halter broken). Cattle must have a temperament to be exhibited; animals determined to be unsafe will be sent home. Animals will arrive on Tuesday morning at 8:00 a.m. to noon. Stay for the duration of the fair, stalls must be kept clean).

Class 18. Cow /Calf Pen Class

DEPARTMENT 220

OPEN CLASS SHEEP

REGISTRATION PAPERWORK

By July 29th

ENTRY DAY Thursday, Aug. 5th
8:00 AM - Noon

*An award will given by
"Centra Sota Co-op" - Little Falls
for the Outstanding Open
Class Sheep exhibited.*

**Notify Superintendent prior to Fair
and give number of animals you
have coming to Fair. This includes
4H, Open Class and F.F.A.**

1. An entry fee of \$2.00 for each lot entered will be required. Due by July 29th. A \$5.00 late fee will be required after deadline for each lot entered.
2. Minnesota Board of Animal Health rules including animal identification requirements will be enforced by official fair vet. See page 76.
3. Animals must appear healthy.
4. Registration papers must be available if requested.
5. Not more than 2 entries per lot by one party will be permitted.
6. Any sheep entered in the Registered Classes cannot be entered in the Commercial Classes.
7. No Grade Rams may be exhibited.
8. All sheep must have a permanent ID#.
9. Staging and release of livestock begins at 8:00 P.M. on last day of the fair.
10. Removing sheep prior to release time will forfeit any premiums earned.
11. **exhibitor shall be prepared to show ownership or proof of registry at time of entry.**

Prize - Classes 1-6

1st.....\$12.00	5th.....\$4.00
2nd.....\$10.00	6th.....\$4.00
3rd.....\$8.00	7th.....\$4.00
4th.....\$6.00	8th.....\$4.00

A champion and reserve champion will be awarded in each class.

DEPARTMENT 220, CLASSES 1-5 SHEEP

Class

1. Registered Hampshire
2. Registered Suffolk
3. Registered Corriedale
4. Registered Columbia
5. Registered any other breed

Lot

1. Ewe Lamb born on or after 01/01/21
2. Ewe, yearling
3. Ewe, 2 yrs and over
4. Ram Lamb born on or after 01/01/21
5. Ram, yearling
6. Ram, 2 yrs or over

DEPARTMENT 220, CLASS 6 COMMERCIAL SHEEP

Lot

1. Ewe Lamb born on or after 1/1/21
2. Ewe, yearling
3. Ewe, 2 yrs and over
4. Market (Wether or Ewe) Lamb, born on or after 1/1/21

DEPARTMENT 220, CLASS 7 GROUP CLASSES

Prizes - Class 7

1st.....\$15.00	2nd.....\$12.00
3rd.....\$10.00	4th.....\$4.00
5th.....\$8.00	6th.....\$6.00
7th.....\$4.00	8th.....\$4.00

All Breeds Competing

Registered and Commercial Sheep
Together

Lot

1. Pairs of Ewe Lambs under 1 yr
2. Pairs of Yearling Ewes
3. Flocks 1 Ram and 3 Ewes (any age)

DEPARTMENT 230

OPEN CLASS RABBITS

REGISTRATION PAPERWORK

By July 29th

ENTRY DAY Thursday, Aug. 5th
8:00 AM - Noon

*An award will be given by Malloy Farms in
memory of Becky Lapka for the
Outstanding Open Class Rabbit exhibited.*

Judging 9:30 A.M. - Friday.

An entry fee of \$1.00 for each lot entered will be required, due by July 29. There is no entry fee for showmanship. A \$2.00 late fee will be required after deadline for each lot entered.

Current RHDV2 guidelines provided by the ARBA will be followed. The show will not be held if there is an outbreak within 90 days within 250 miles. Rabbits must not be brought to the show if they have been within 150 miles of a confirmed case within 90 days of the show.

1. One entry per class/breed in each lot.
2. NO rabbits under 6 weeks allowed.
3. Exhibits will be released beginning at 8:00 P.M. the last day of the fair.
4. Removing animals prior to release time will forfeit premiums earned.

Ribbons for 1st-5th place,
champion and reserve champion
in each class. Best of show plaque and
reserve in show rosette.

Prizes - Classes 1-51

1st.....\$5.00	4th.....\$2.50
2nd.....\$4.00	5th.....\$2.00
3rd.....\$3.00	

ONLY 1ST AND 2ND PLACE
FOR CLASS 52

**NO RABBITS MAY BE SOLD
OR GIVEN AWAY ON
THE FAIRGROUNDS
DURING THE FAIR.**

- Class 1 - American
- Class 2 - American Chinchilla
- Class 3 - American Fuzzy Lop
- Class 4 - American Sable
- Class 5 - Belgian Hare
- Class 6 - Beveren
- Class 7 - Blan de Hotot
- Class 8 - Britannia Petite
- Class 9 - Californian
- Class 10 - Champagne D'argent
- Class 11 - Checkered Giant
- Class 12 - Cinnamon
- Class 13 - Cream D'argent
- Class 14 - Dutch
- Class 15 - Dwarf Hotot
- Class 16 - English Angora
- Class 17 - English Lop
- Class 18 - English Spot
- Class 19 - Flemish Giant
- Class 20 - Florida White
- Class 21 - French Angora
- Class 22 - French Lop
- Class 23 - Giant Angora
- Class 24 - Giant Chinchilla
- Class 25 - Harlequin
- Class 26 - Havana
- Class 27 - Himalayan
- Class 28 - Holland Lop
- Class 29 - Jersey Wooly
- Class 30 - Lilac
- Class 31 - Lionhead
- Class 32 - Mini Lop
- Class 33 - Mini Rex
- Class 34 - Mini Satin
- Class 35 - Netherland Dwarf
- Class 36 - New Zealand
- Class 37 - Palomino

Class 38 - Polish
 Class 39 - Rex
 Class 40 - Rhinelander
 Class 41 - Satin
 Class 42 - Satin Angora
 Class 43 - Silver
 Class 44 - Silver Fox
 Class 45 - Silver Marten
 Class 46 - Standard Chinchilla
 Class 47 - Tan
 Class 48 - Thrianta
 Class 49 - Any unlisted ARBA breed

Lot

1. Senior Buck
2. Senior Doe
3. Intermediate Buck (6-8 months)
4. Intermediate Doe (6-8 months)
5. Junior Buck under 6 months
6. Junior Doe under 6 months (small breeds do not have intermediate classes.)

DEPARTMENT 230, CLASSES 50-51 MEAT & FUR RABBITS

The same rabbit may NOT also be entered in any class 1-49

DEPARTMENT 230, CLASS 50 MEAT

Lot

1. Meat Pen
2. Single Fryer
3. Roaster
4. Stewer

DEPARTMENT 230, CLASS 51 FUR

Lot

1. White Breed Fur/Wool
2. Colored Breed Fur/Wool
3. Fryer Fur

DEPARTMENT 230, CLASS 52 RABBIT SHOWMANSHIP

Lot

1. Beginner
2. Intermediate
3. Experienced

DEPARTMENT 240

OPEN CLASS POULTRY

REGISTRATION PAPERWORK

By July 29th

**ENTRY DAY Thursday, Aug. 5th
8:00 AM - Noon**

*An award will be given by
 Nelson Shine Produce for the
 Outstanding Open Class Poultry exhibited.*

Judging - 8:30 AM Friday, August 6th

Entry Fee \$1.00 per lot entered paid by July 30th. A \$2.00 late fee per lot will be charged after deadline.

We reserve the right to combine lots into one large class if there are not enough entries.

Entries are taken as first come, first served. Please contact Poultry Superintendent for cage placements @ 218-839-9804 after you have registered your entries.

A Pollorum testing clinic will be available on Monday, Aug. 2nd. Please contact the Poultry Superintendent to make arrangements for this testing BEFORE the fair entry day if needed. Pollorum testing will not be available on entry day (Thursday).

DEFINITIONS OF POULTRY TERMS:
 Trio: One male and 2 matching females. Birds that compete singly CAN NOT compete in other lots such as trio or pairs and vice versa.

Pair: 1 male and 1 female.

Young Bird: Any poultry hatched after January 1, 2021 (born this year).

Old Bird: Any poultry hatched before January 1, 2021.

Cock: Male bird over 1 yr old

Hen: Female bird over 1 yr old

Cockerel: Young male under 1 yr old

Pullet: Young female under 1 yr old

General Rules

1. exhibitors are responsible for supplying their own feed & bedding (saw dust). As well as cleaning cages every morning before 10am, feeding and caring for birds unless other arrangements are made.
2. Standard breeds and hybrid poultry may be exhibited.
3. Poultry will be judged on breed characteristics using the American Standards of Perfection.
4. Exhibition of livestock in Minnesota requirements on page 76 will be followed.
5. Birds which are diseased or unfit for competition will not be entered, as per fair veterinarian.
6. Entries will be taken at the East end of the Poultry barn on Thursday morning.
7. Exhibits will be released beginning at 8 pm on the last day of the Fair.
8. Removing poultry prior to release time will forfeit any premiums earned.
9. A person may not show more than 2 pens per lot.
10. Birds may not be shown in more than 1 Class/Lot.
11. Please do not bypass the entry and registration desks on entry day and place your birds in cages until you've passed all paperwork and tests and have been ok'd by staff. All birds placed in cages must be ID banded and health checked first.

Ribbons for 1st-5th place in each lot. Grand Champion and Reserve Champion ribbons awarded in each species.

Classes 1-10

1st	\$5.00
2nd	\$4.00
3rd	\$3.00
4th	\$2.00
5th	\$1.00

DEPARTMENT 240, CLASS 1 STANDARD CHICKENS (All Breeds)

Lot

1. Breeding Trio - Old
2. Breeding Trio - Young
3. Breeding Pair - Old
4. Breeding Pair - Young
5. 1 single Cock
6. 1 single Hen
7. 1 single Cockerel
8. 1 single Pullet

DEPARTMENT 240, CLASS 2 BAANTAM CHICKENS (All Breeds)

Lot

1. Breeding Trio - Old
2. Breeding Trio - Young
3. Breeding Pair - Old
4. Breeding Pair - Young
5. 1 single Cock
6. 1 single Hen
7. 1 single Cockerel
8. 1 single Pullet

DEPARTMENT 240, CLASS 3 EGG LAYING CHICKENS (2 Pullets)

Lot

1. Brown Egg Layers
2. White Egg Layers
3. Rainbow Egg Layers

DEPARTMENT 240, CLASS 4 MARKET POULTRY (2 Males or 2 Females)

Lot

1. Chickens
2. Ducks
3. Geese
4. Turkey
5. Other

DEPARTMENT 240, CLASS 5 STANDARD BREEDING DUCKS

Lot

1. Standard Breeding Trio - Old
2. Standard Breeding Trio - Young
3. Standard Breeding Pair - Old
4. Standard Breeding Pair - Young
5. 1 Standard Drake - Old
6. 1 Standard Drake - Young
7. 1 Standard Hen - Old
8. 1 Standard Hen - Young

DEPARTMENT 240, CLASS 6
BANTAM BREEDING DUCKS

Lot

1. Bantam Breeding Trio - Old
2. Bantam Breeding Trio - Young
3. Bantam Breeding Pair - Old
4. Bantam Breeding Pair - Young
5. 1 Bantam Breeding Drake - Old
6. 1 Bantam Breeding Drake - Young
7. 1 Bantam Breeding Hen - Old
8. 1 Bantam Breeding Hen - Young

DEPARTMENT 240, CLASS 7
GEESE

Lot

1. Breeding Trio
2. Breeding Pair
3. 1 Single Gander
4. 1 Single Goose

DEPARTMENT 240, CLASS 8
TURKEY

Lot

1. Breeding Trio
2. Breeding Pair
3. 1 Single Tom
4. 1 Single Hen

DEPARTMENT 240, CLASS 9
ALL OTHER

(Pheasant, Quail, Guinea Fowl, Emu, Ratite, Etc.)

Lot

1. Breeding Trio
2. Breeding Pair
3. 1 Single Male
4. 1 Single Female

DEPARTMENT 240, CLASS 10
PIGEONS

Lot

1. Breeding Pair - Fancy
2. Breeding Pair - Flying
3. Breeding Pair - Utility
4. 1 Single Male or Female

DEPARTMENT 240, CLASS 11
POULTRY SHOWMANSHIP
(All ages)

Lot

1. Beginner
2. Intermediate
3. Experienced

DEPARTMENT 240, CLASS 12
LAYING EGGS

(1 dozen cleaned and in appropriate carton, labeled)

Lot

1. Brown Eggs, 1 dozen
2. White Eggs, 1 dozen
3. Rainbow eggs, 1 dozen (any other color, do not need to all match)

DEPARTMENT 250

OPEN CLASS GOATS

REGISTRATION PAPERWORK

By July 29th

ENTRY DAY Thursday, Aug. 5th
8:00 AM - Noon

*An award will be given by
"Centra Sota Co-op"- Little Falls
for the Outstanding Open Class
Goat exhibited.*

**Notify Superintendent prior to Fair
and give number of animals you
have coming to Fair. This includes
4H, Open Class and F.F.A.**

1. Minnesota Board of Animal Health rules including animal identification requirements will be enforced by the official fair veterinarian. See page 76.
2. Registration papers must be available if requested.
3. An entry fee of \$2.00 for each lot will be required, due by July 29, 2021. A \$5.00 late fee will be required after deadline for each lot entered.
4. No more than two entries per lot by one party allowed.
5. All goats including milking Does must stay for the duration of the fair.
6. No Bucks will be allowed.
7. Any goat entered in a registered class cannot be entered in a grade class.
8. Young Does of meat breeds should be shown in only one category - market or breeding, not both.
9. Exhibits will be released beginning at 8:00 P.M. the last day of the fair.
10. Removing goats prior to release time will forfeit any premiums earned.
11. **exhibitor shall be prepared to show ownership or proof of registry at time of entry.**

Prizes, Classes 1-5, All Lots

1st	\$12.00
2nd	\$10.00
3rd	\$8.00
4th	\$6.00
5th	\$4.00
6th	\$4.00
7th	\$4.00
8th	\$4.00

DAIRY GOATS

CLASS 1 - Registered Alpine
CLASS 2 - Registered LaMancha
CLASS 3 - Registered Nigerian Dwarf
CLASS 4 - Registered Nubian
CLASS 5 - Registered Oberhasli
CLASS 6 - Registered Toggenburg
CLASS 7 - Recorded Grade
CLASS 8 - Grade

Lot

1. Jr. Doe Kid born on or after 4-1-21
2. Sr. Doe Kid born 1-1-21 to 3-31-21
3. Dry Yearling born in 2020

Junior champion & reserve champion
(top 2 from lots 1-3 compete, no premium, ribbons only)

Lot

4. Milking Yearlings born in 2020
5. Milking 2 yr olds born in 2019
6. Milking 3 & 4 yr olds born in 2017 or 2018
7. Milking Does 5 yrs and older born in 2016 or before

Senior champion & reserve champion
(top 2 from lots 4-7 compete, no premium, ribbons only)

**CLASS 11 - DAIRY GOAT
GROUP CLASSES**

Lot

1. Mother/Daughter – any age, registered and grade animals.
2. Produce of Dam – two daughters from the same Dam, any age, must be the same owner.
3. Get-of Sire – 3 daughters from one Buck, must be same owner
4. Best Three Females – at least one must be in milk, same Herd.
5. Dairy Herd – 4 milkers, same Herd

MEAT GOATS

CLASS 12 - Meat Goats – Registered
CLASS 13 - Meat Goats – Grade

Lot

1. Jr. Doe Kid born on or after 4-1-21
2. Sr. Doe Kid born 1-1-20 to 3-31-21
3. Yearling doe, born in 2020, never kidded

Junior champion & reserve champion
(top 2 from lots 1-3 compete, no premium, ribbons only)

**CLASS 14 - MEAT GOAT
GROUP CLASSES**

Lot

1. Produce of Dam – 2 daughters from same Dam, must be same owner.
2. Get of Sire – 3 daughters from one Buck, must be same owner

**CLASS 15 - MARKET GOATS
– BORN IN 2019**

Lot

1. 100% dairy breeds or dairy breed crosses
2. Meat breeds or crosses with dairy breeds

(large classes will be divided by weight at the fair)

Champion & reserve champion
(top 2 from lots 1 and 2, no premium, ribbons only)

DEPARTMENT 260**OPEN CLASS SWINE****REGISTRATION PAPERWORK****By July 29th****ENTRY DAY Thursday, Aug. 5th
8:00 AM - Noon**

An award will be given by "Centra Sota Co-Op" Little Falls for the Outstanding Open Class Swine exhibited.

Notify Superintendent prior to Fair and give number of animals you have coming to Fair. This includes 4H, Open Class and F.F.A.

1. An entry fee of \$2.00 for each lot entered will be required. Due by JULY 29th. A \$5.00 late fee will be required after the deadline for each lot entered.
2. Minnesota Board of Animal Health rules including animal identification requirements will be enforced by the official fair veterinarian. See page 76.
3. Not more than 2 entries per lot by one party will be permitted.
4. Any swine entered in the registered classes cannot be entered in the commercial classes.
5. Exhibits will be released beginning at 8:00 P.M. the last day of the fair.
6. Removing swine prior to release time will forfeit any premiums earned.

Prizes, Classes 1-2

1st	\$12.00
2nd	\$10.00
3rd	\$8.00
4th	\$6.00
5th	\$4.00
6th	\$4.00
7th	\$4.00
8th	\$4.00

CLASS 1 - REGISTERED

Lot

1. Gilt, farrowed after 1/1 of current year

CLASS 2 - COMMERCIAL

Lot

1. Breeding Gilt, farrowed 1/1 of current yr
2. Market Gilt, farrowed 1/1 of current yr
3. Barrow, farrowed after 1/1 of current yr
4. Feeder Pigs, pen of 2, 40-60 lbs.

Group Class Prizes, Class 3

1st	\$15.00
2nd	\$12.00
3rd	\$10.00
4th	\$10.00
5th	\$8.00
6th	\$6.00
7th	\$4.00
8th	\$4.00

CLASS 3 - GROUP CLASSES

All breeds, registered and commercial will compete together

Lot

1. Breeding pen of 3 gilts, farrowed after 1/1 of current year
2. Market pen of 3 barrows, farrowed after 3/1 of current year

DEPARTMENT 300 FFA

1. Notify barn superintendent of animals coming to fair
2. FFA livestock to be judged Tuesday & Wednesday following the respective 4-H class - See schedule.
3. This division is open to all members of the FFA.
4. All breeds are to be judged together.
5. No animal may be shown in both FFA and 4-H Livestock show.

REGISTRATION PAPERWORK**Due By JULY 29th**

A trophy for Best Overall Animal in Classes 1-13 will be presented by the Brainerd FFA Alumni.

CATTLE

Prizes: 1st - \$10, 2nd - \$7, 3rd - \$5

DEPT. 300/FFA - CLASS 1 - BEEF

Lot

1. Heifers under 1 yr of age
2. Heifers over 1 & under 2 yr of age
3. Feeder or lightweight Steer, under 2 yrs old
4. Finished beef Steer, over 2 yrs old
5. Finished dairy Steer, over 2 yrs old
6. Cow/Calf pair (no other lot entries)
7. Prospect Calf, Heifer or Steer, born after 1/1 of current year
8. Beef Showmanship

DEPT. 300/FFA - CLASS 2 - DAIRY

Lot

1. Holstein Cattle under 1 yr of age
2. Holstein Cattle over 1 and under 2 yrs of age
3. Cows over 2 and under 3 yrs of age
4. Cows over 3 yrs of age
5. Color Breed Cattle under 1 yr of age
6. Color Breed Cattle over 1 and under 2 yrs of age
7. Color Breed Cows over 2 and under 3 yrs of age
8. Color Breed Cows over 3 yrs of age
9. Dairy Showmanship

DEPT. 300/FFA - CLASS 3 - SHEEP

Prizes: 1st - \$5, 2nd - \$4, 3rd - \$3

Lot

1. Commercial Spring Ewe Lamb
2. Commercial Yearling Ewe
3. Commercial Market Lamb
4. Commercial Ram Lamb
5. Commercial Aged Lamb
6. Registered Spring Ewe Lamb
7. Registered Yearling Ewe
8. Registered Market Lamb
9. Registered Ram Lamb
10. Registered Aged Ram Lamb
11. Sheep Showmanship

DEPT. 300/FFA - CLASS 4 - SWINE

Prizes: 1st - \$5, 2nd - \$4, 3rd - \$3

Lot

1. Market Barrow
2. Breeding Gilt
3. Market Gilt
4. Pen of 3
5. Swine Showmanship

DEPT. 300/FFA - CLASS 5 - RABBITS

Prizes: 1st - \$3, 2nd - \$2, 3rd - \$1

Purebred Classes

1. Senior Buck
2. Intermediate Buck
3. Junior Buck
4. Senior Doe
5. Intermediate Doe
6. Junior Doe

Market Classes

7. Single Fryer - Purebred or Crossbred 3-5 lbs.
8. Single Baker - Purebred or Crossbred 5.5-8 lbs.
9. Single Roaster - Purebred or Crossbred over 8 lbs.
10. Pen of 3 Fryers
11. Barnyard Babies - a Doe with 4-7 week old babies still with her
12. Rabbit Showmanship

POULTRY

Prizes: 1st - \$3, 2nd - \$2, 3rd - \$1
(to be shown before 4-H)

DEPT. 300/FFA - CLASS 6 CHICKENS

Lot

1. Market Hen, Brown Egg Layer, 2 birds
2. Market Hen, White Egg Layer, 2 birds
3. Market Rooster, 2 birds
4. Bantam Rooster, 2 birds
5. Bantam breeding pen, 2 Hens, 1 Rooster
6. Breeding pen, 2 Hens, 1 Rooster

DEPT. 300/FFA - CLASS 7 - DUCKS

Lot

1. Breeding pen, 2 females, 1 male
2. Market pen, 2 ducks

DEPT. 300/FFA - CLASS 8 - GEESE

Lot

1. Market Female Goose, 2
2. Market Gander, 2
3. Breeding pen, 2 females, 1 male

DEPT. 300/FFA - CLASS 9 - TURKEYS

Lot

1. Market Hen, 1
2. Market Tom, 1
3. Breeding pen, 2 females, 1 male

DEPT. 300/FFA - CLASS 10

Lot

1. Poultry Showmanship

**DEPT. 300/FFA - CLASS 11
- DAIRY GOATS**

Prizes: 1st - \$5, 2nd - \$4, 3rd - \$3

Lot

1. Junior Doe kid
2. Senior Doe kid
3. Dry Yearling
4. Wether
5. Milking Yearling
6. Milking 2 yr old
7. Milking 3-4 yr old
8. Milking 5+ yr old
9. Meat Wether
10. Goat Showmanship

**DEPT. 300/FFA - CLASS 12
- MEAT GOATS**

Prizes: 1st - \$5, 2nd - \$4, 3rd - \$3

Lot

1. Junior Doe kid
2. Senior Doe kid
3. Dry Yearling
4. Wether

DEPT. 300/FFA - HORSE

Saturday, August 5

A highpoint Trophy sponsored by the Brainerd FFA Alumni will be awarded to the top FFA Exhibitor at the Saturday Open WSCA Show. No pre-registration required. No Premiums awarded.

AG MECHANICS

Prizes: 1st - \$5, 2nd - \$4, 3rd - \$3

**DEPT. 300/FFA - CLASS 12
LARGE PROJECTS**

Lot

1. Metal Project
2. Wood Project
3. Combined Project
4. Restoration or overall with procedural outline, before picture is encouraged.

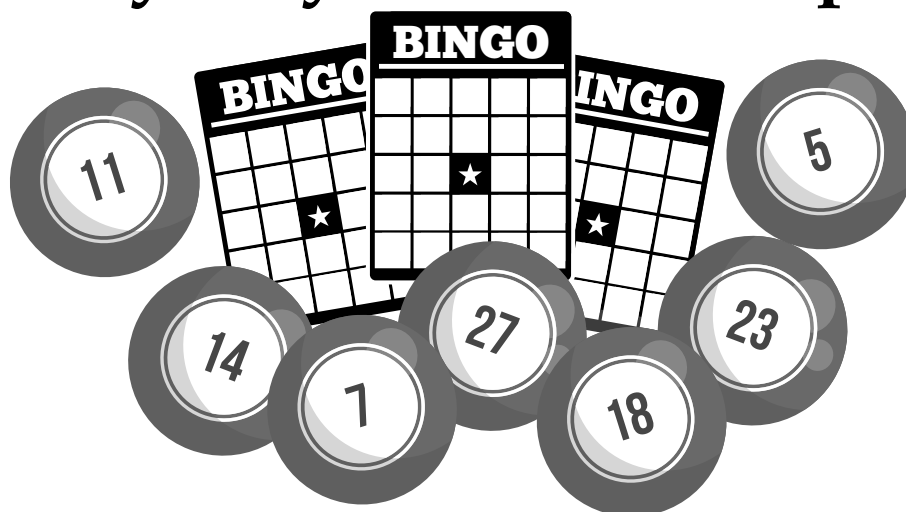
**DEPT. 300/FFA - CLASS 13
SMALL PROJECTS**

Lot

1. Concrete Project
2. Electrical Project
3. Metal Project
4. Hitch Pin
5. Construction Materials
6. Feed Scoop
7. Metal Tool Carrier
8. Jack Stand
9. Metal Ramp
10. Braiding
11. Wood Burning
12. Your Own Idea

BINGO

at Curling Building
Every Day 12:00 to 8:00 p.m.



Operated by Mid Minnesota Women's Center
Midminwomenscenter.blogspot.com
Contact: Lenora Zino - 218-537-0588

R & J Broadcasting, Inc.

“Home Grown Local Radio”

Serving the communities
throughout the lakes area



rjbroadcasting.com

For local radio marketing, contact the Brainerd office at
218-828-9994 or Aitkin at 218-927-2100. #RADIOWORKS



This image shows a single sheet of white paper with horizontal ruling lines. The lines are evenly spaced and run across the width of the page. There are no margins, text, or other markings on the paper.




This image shows a single sheet of white paper with horizontal ruling lines. The lines are evenly spaced and run across the width of the page. There are no margins, text, or other markings on the paper.



**ISA
Certified
Arborists!**

SERVING THE ENTIRE LAKES AREA



Become a member of
paddling at your own pace.

Wings Financial Credit Union is proud to become a part of the Brainerd Lakes area, serving our members with:

- Money-saving loan rates
- Balance-boosting earnings & fewer fees
- Powerful mobile & online banking
- Service that puts you first

*Brainerd Savings & Loan
is now*

**WINGS FINANCIAL
CREDIT UNION**

Become a member of opportunity.

Open to anyone who lives or works in Crow Wing County, as well as those who join via the Wings Financial Foundation.

524 South Sixth Street, Brainerd | wingsfinancial.com

Federally insured by NCUA.

Wings
FINANCIAL
CREDIT UNION

CROW WING COUNTY FAIR
PO Box 169
Brainerd, Minnesota 56401
218-829-6680

PRSR STD
U.S. Postage
PAID
Brainerd, MN
Permit No. 471

MILLS AUTOMOTIVE GROUP IS PROUD TO SPONSOR THE "FREE STAGE" AT THE 2021 CROW WING COUNTY FAIR!

MILITARY DAY Tuesday Aug. 3	SENIOR DAY Wednesday Aug. 4	AGRICULTURE DAY Thursday Aug. 5	TEEN DAY & TALENT CONTEST Friday Aug. 6	KIDS DAY Saturday Aug. 7
1:00 PM - 3:30 PM Oak Street Chapel (Variety)	10:30 AM Great Northern Model T Club & The Old Homestead Power Tractor Club Parade	1:00 PM - 3:30 PM Doug Allen Nash (Variety)	11:00 AM Pre-Teen Talent Contest	10:00 AM Dig for Coins Curling Building
5:30 PM Opening Ceremonies Parade of Colors	Noon Senior Day Recognition	4:00 PM Kids Pedal Pull	1:00 PM Teen Talent Contest	10:00 AM Racing Derby Curling Building
6:00 PM - 10:00 PM Darlen & the Boys (Variety)	1:00 PM - 4:30 PM Vern Bishop & Moose River Band (Variety)	6:00 PM - 10:00 PM Wild Ryes (Variety)	3:00 PM Open Class Talent Contest	2:00 PM Miss Brainerd Lakes Princess
	6:00 PM - 10:00 PM Alan Godage Band (Classic Country)		7:00 PM - 10:00 PM Arena (Variety)	3:00 PM - 4:00 PM 4-H Dog Exhibition
				4:30 PM - 6:00 PM Ray's Promenaders (Square Dancing)
				7:00 PM - 10:00 PM Wayne Renn Band (Variety)

